

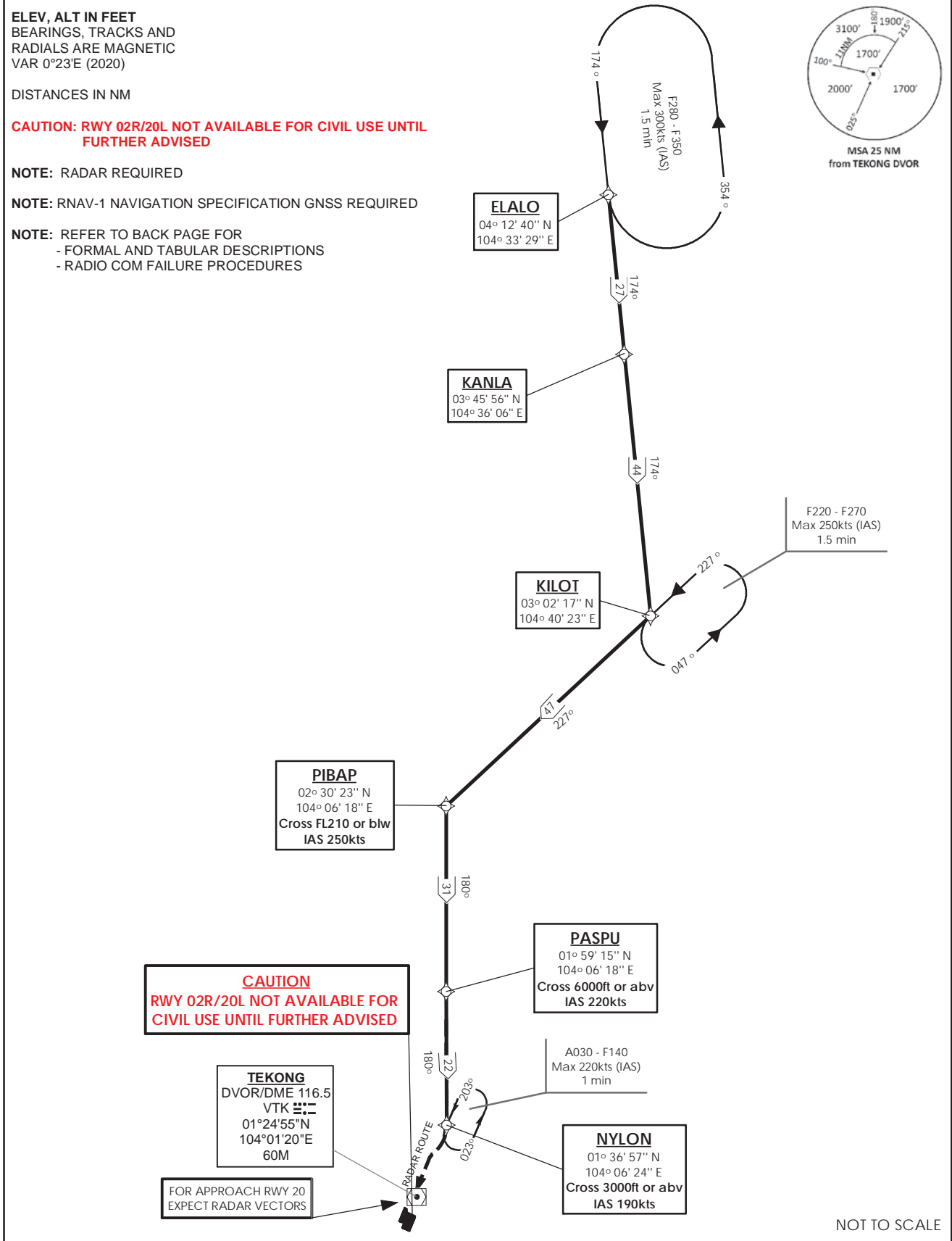
**STANDARD ARRIVAL CHART  
RNAV (GNSS) -  
INSTRUMENT (STAR)**

|                    |
|--------------------|
| ACC 133.8          |
| APP 124.05         |
| 119.3              |
| TWR 118.6 / 118.25 |

|                                 |
|---------------------------------|
| TRANSITION ALTITUDE<br>11 000ft |
|---------------------------------|

|                              |
|------------------------------|
| D-ATIS AP ID-WSSS<br>128.025 |
|------------------------------|

**SINGAPORE/Singapore Changi  
RWY 20R/C/L  
ELALO ONE BRAVO ARRIVAL  
ELALO 1B**



31 OCT 2024

**ELALO 1B (STAR) RNAV GNSS RWY 20R/20C/20L - DESCRIPTIONS****Formal & Abbreviated Descriptions**

| Formal Description                                  | Abbreviated Description   | Path Terminator | Fly-Over required |
|---|---------------------------|-----------------|-------------------|
| From ELALO.   | ELALO -                   | IF              | N                 |
| To KANLA.   | KANLA -                   | TF              | N                 |
| To KILOT, turn right.                               | KILOT [R] -               | TF              | N                 |
| To PIBAP at or below FL210, speed 250kts turn left. | PIBAP [FL210-; K250; L] - | TF              | N                 |
| To PASPU, at or above 6000ft, speed 220kts.         | PASPU [A060+; K220] -     | TF              | N                 |
| To NYLON at or above 3000ft, speed 190kts.          | NYLON [A030+; K190]       | TF              | N                 |

**Tabular Descriptions**

| Path Term | Waypoint Name | Fly-Over | Course °M(°T) | Distance (NM) | Turn Direction | Altitude | Speed Limit | Navigation Spec |
|-----------|---------------|----------|---------------|---------------|----------------|----------|-------------|-----------------|
| IF        | ELALO         | -        | -             | -             | -              | -        | -           | RNAV1           |
| TF        | KANLA         | -        | 174(174.4)    | 27.0          | -              | -        | -           | RNAV1           |
| TF        | KILOT         | -        | 174(174.4)    | 44.0          | R              | -        | -           | RNAV1           |
| TF        | PIBAP         | -        | 227(227.4)    | 47.0          | L              | FL210-   | K250        | RNAV1           |
| TF        | PASPU         | -        | 180(180.4)    | 31.0          | -              | A060+    | K220        | RNAV1           |
| TF        | NYLON         | -        | 180(180.4)    | 22.0          | -              | A030+    | K190        | RNAV1           |

**Radio Communications Failure Procedure**

|   |  |
|---|--|
| 1 | <b>SET TRANSPONDER TO MODE A/C CODE 7600</b>   |
| 2 | <p><b>When cleared via ELALO 1B by Singapore ATC</b></p> <p>(a) Maintain last assigned flight level or altitude and proceed on ELALO 1B to NYLON</p> <p>(b) From NYLON commence descent and carry out appropriate landing procedure for RWY 20 as close as possible to EAT or ETA</p> <p>(c) If unable to effect a landing, refer to Singapore AIP for missed approach procedure</p> |
| 3 | <p><b>No clearance or instruction received from Singapore ATC</b></p> <p>- Refer to Singapore AIP for radio communications failure procedure</p>   |