

SINGAPORE/Singapore Changi
RWY 20R/C/L
UGEBO ONE BRAVO ARRIVAL
UGEBO 1B

D-ATIS AP ID-WSSS
128.025

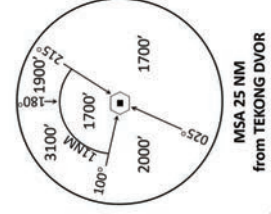
TRANSITION ALTITUDE
11 000ft

ACC 134.2
APP 124.05
119.3
TWR 118.6 / 118.25

STANDARD ARRIVAL CHART
RNAV (GNSS) -
INSTRUMENT (STAR)

ELEV. ALT IN FEET
BEARINGS, TRACKS AND
RADIALS ARE MAGNETIC
VAR 0°23'E (2020)

DISTANCES IN NM



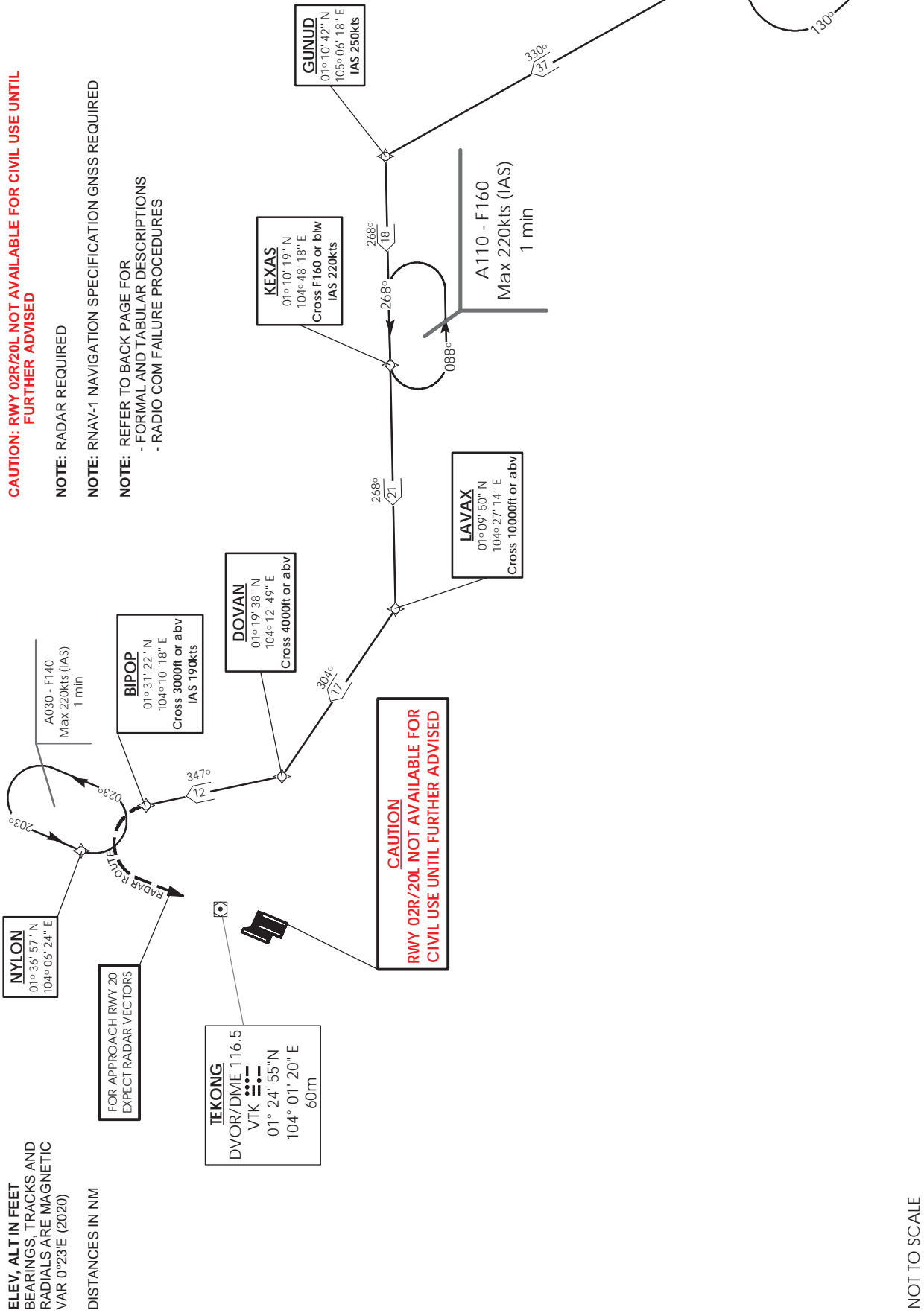
CAUTION: RWY 02R/20L NOT AVAILABLE FOR CIVIL USE UNTIL FURTHER ADVISED

NOTE: RADAR REQUIRED

NOTE: RNAV-1 NAVIGATION SPECIFICATION GNSS REQUIRED

NOTE: REFER TO BACK PAGE FOR

- FORMAL AND TABULAR DESCRIPTIONS
- RADIO COM FAILURE PROCEDURES



FOR APPROACH RWY 20
EXPECT RADAR VECTORS

TEKONG
DVOR/DME 116.5
VTK
01° 24' 55"N
104° 01' 20"E
60m

NYLON
01° 36' 57" N
104° 06' 24" E

BIPOP
01° 31' 22" N
104° 10' 18" E
Cross 3000ft or abv
IAS 190kts

DOVAN
01° 19' 38" N
104° 12' 49" E
Cross 4000ft or abv

KEXAS
01° 10' 19" N
104° 48' 18" E
Cross F160 or b/w
IAS 220kts

GUNUD
01° 10' 42" N
105° 06' 18" E
IAS 250kts

LAVAX
01° 09' 50" N
104° 27' 14" E
Cross 10000ft or abv

UGEBO
00° 38' 13" N
105° 24' 32" E

NOT TO SCALE

31 OCT 2024

UGEBO 1B (STAR) RNAV GNSS RWY 20R/20C/20L - DESCRIPTIONS**Formal & Abbreviated Descriptions**

Formal Description	Abbreviated Description	Path Terminator	Fly-Over required
From UGEB0.	UGEBO -	IF	N
To GUNUD, speed 250kts, turn left.	GUNUD [K250; L] -	TF	N
To KEXAS at or below FL160, speed 220kts.	KEXAS [FL160-; K220] -	TF	N
To LAVAX at or above 10000ft, turn right.	LAVAX [A100+; R] -	TF	N
To DOVAN at or above 4000ft, turn right.	DOVAN [A040+; R] -	TF	N
To BIPOP at or above 3000ft, speed 190kts.	BIPOP [A030+; K190]	TF	N

Tabular Descriptions

Path Term	Waypoint Name	Fly-Over	Course °M(°T)	Distance (NM)	Turn Direction	Altitude	Speed Limit	Navigation Spec
IF	UGEBO	-	-	-	-	-	-	RNAV1
TF	GUNUD	-	330(330.4)	37.0	L	-	K250	RNAV1
TF	KEXAS	-	268(268.4)	18.0	-	FL160-	K220	RNAV1
TF	LAVAX	-	268(268.4)	21.0	R	A100+	-	RNAV1
TF	DOVAN	-	304(304.4)	17.0	R	A040+	-	RNAV1
TF	BIPOP	-	347(347.4)	12.0	-	A030+	K190	RNAV1

Radio Communications Failure Procedure

1	SET TRANSPONDER TO MODE A/C CODE 7600
2	<p>When cleared via UGEB0 1B by Singapore ATC</p> <p>(a) Maintain last assigned flight level or altitude and proceed on UGEB0 1B to BIPOP, then direct to NYLON</p> <p>(b) From NYLON commence descent and carry out appropriate landing procedure for RWY 20 as close as possible to EAT or ETA</p> <p>(c) If unable to effect a landing, refer to Singapore AIP for missed approach procedure</p>
3	<p>No clearance or instruction received from Singapore ATC</p> <p>- Refer to Singapore AIP for radio communications failure procedure</p>