

**STANDARD ARRIVAL CHART
RNAV (GNSS) -
INSTRUMENT (STAR)**

ACC 133.25
APP 124.6
119.3
TWR 118.6 / 118.25

TRANSITION ALTITUDE
11 000ft

D-ATIS AP ID-WSSS
ARR 128.025

**SINGAPORE/Singapore Changi
RWY 02L/C/R
TEBUN ONE ALPHA ARRIVAL
TEBUN 1A**

ELEV, ALT IN FEET
BEARINGS, TRACKS AND
RADIALS ARE MAGNETIC
VAR 0°23'E (2020)

DISTANCES IN NM

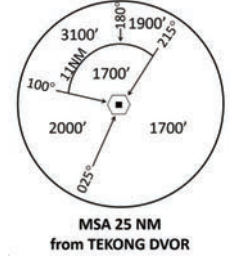
**CAUTION: RWY 02R/20L NOT AVAILABLE FOR CIVIL USE UNTIL
FURTHER ADVISED**

NOTE: RADAR REQUIRED

NOTE: RNAV-1 NAVIGATION SPECIFICATION GNSS REQUIRED

NOTE: REFER TO BACK PAGE FOR
- FORMAL AND TABULAR DESCRIPTIONS
- RADIO COM FAILURE PROCEDURES

NOTE: FLIGHT PLANNING INSTRUCTIONS:
- AIRCRAFT TO FLY ARAMA DIRECT TO TEBUN
TO JOIN TEBUN 1A STAR



**CAUTION
RWY 02R/20L NOT AVAILABLE FOR
CIVIL USE UNTIL FURTHER ADVISED**

TEKONG
DVOR/DME 116.5
VTK
01° 24' 55" N
104° 01' 20" E
60m

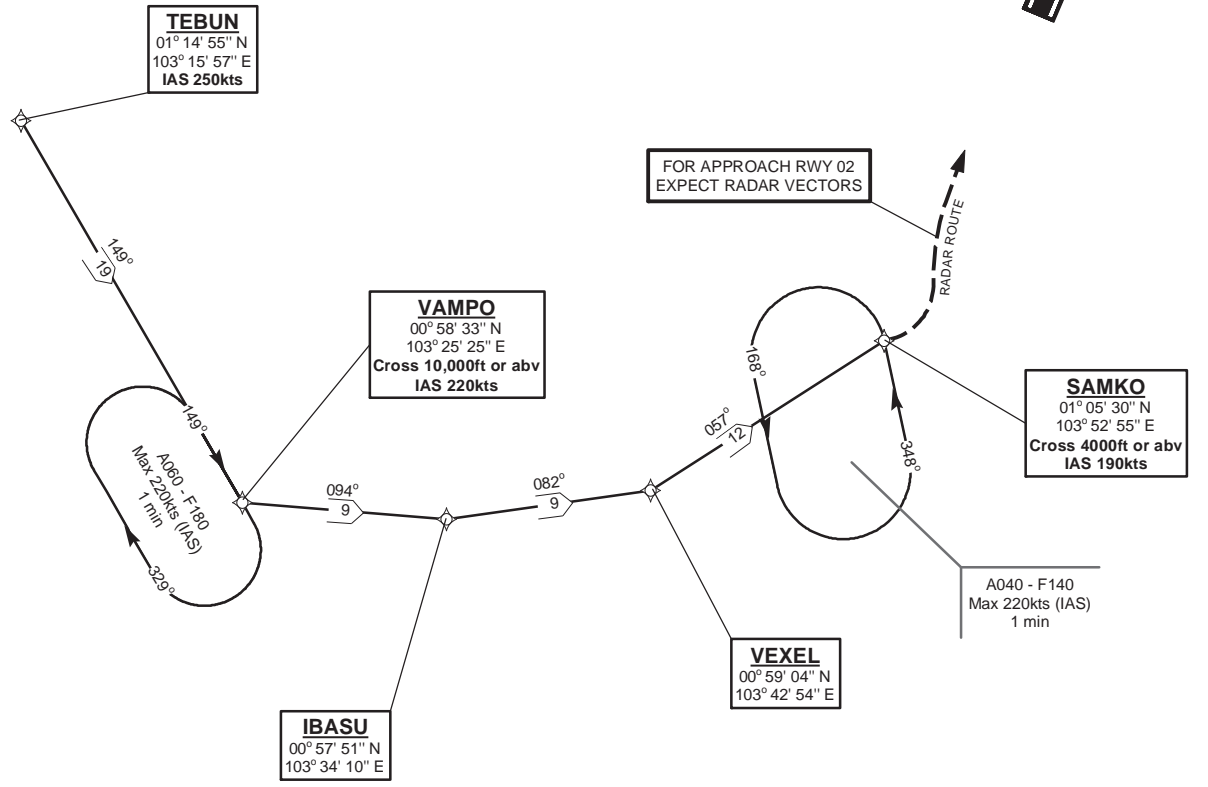
TEBUN
01° 14' 55" N
103° 15' 57" E
IAS 250kts

VAMPO
00° 58' 33" N
103° 25' 25" E
Cross 10,000ft or abv
IAS 220kts

SAMKO
01° 05' 30" N
103° 52' 55" E
Cross 4000ft or abv
IAS 190kts

VEXEL
00° 59' 04" N
103° 42' 54" E

IBASU
00° 57' 51" N
103° 34' 10" E



FOR APPROACH RWY 02
EXPECT RADAR VECTORS

A040 - F140
Max 220kts (IAS)
1 min

NOT TO SCALE

31 OCT 2024

TEBUN 1A (STAR) RNAV GNSS RWY 02L/02C/02R - DESCRIPTIONS**Formal & Abbreviated Descriptions**

Formal Description	Abbreviated Description	Path Terminator	Fly-Over required
From TEBUN, Speed 250kts.	TEBUN [K250] -	IF	N
To VAMPO at or above 10000ft, speed 220kts, turn left.	VAMPO [A100+; K220; L] -	TF	N
To IBASU, turn left.	IBASU [L] -	TF	N
To VEXEL, turn left.	VEXEL [L] -	TF	N
To SAMKO at or above 4000ft, speed 190kts.	SAMKO [A040+; K190]	TF	N

Tabular Descriptions

Path Term	Waypoint Name	Fly-Over	Course °M(°T)	Distance (NM)	Turn Direction	Altitude	Speed Limit	Navigation Spec
IF	TEBUN	-	-	-	-	-	K250	RNAV1
TF	VAMPO	-	149(149.4)	19.0	L	A100+	K220	RNAV1
TF	IBASU	-	094(094.4)	9.0	L	-	-	RNAV1
TF	VEXEL	-	082(082.4)	9.0	L	-	-	RNAV1
TF	SAMKO	-	057(057.4)	12.0	-	A040+	K190	RNAV1

Radio Communications Failure Procedure

1	SET TRANSPONDER TO MODE A/C CODE 7600
2	<p>When cleared via TEBUN 1A by Singapore ATC</p> <p>(a) Maintain last assigned flight level or altitude and proceed on TEBUN 1A to SAMKO</p> <p>(b) From SAMKO commence descent and carry out appropriate landing procedure for RWY 02 as close as possible to EAT or ETA</p> <p>(c) If unable to effect a landing, refer to Singapore AIP for missed approach procedure</p>
3	<p>No clearance or instruction received from Singapore ATC</p> <p>- Refer to Singapore AIP for radio communications failure procedure</p>