

**STANDARD ARRIVAL CHART
RNAV (GNSS) -
INSTRUMENT (STAR)**

ACC 134.4
APP 124.6
119.3
TWR 118.6 / 118.25

TRANSITION ALTITUDE 11 000ft

D-ATIS AP ID-WSSS 128.025

**SINGAPORE/Singapore Changi
RWY 20R/C/L
LEBAR THREE BRAVO ARRIVAL
LEBAR 3B**

ELEV, ALT IN FEET
BEARINGS, TRACKS AND
RADIALS ARE MAGNETIC
VAR 0°23'E (2020)

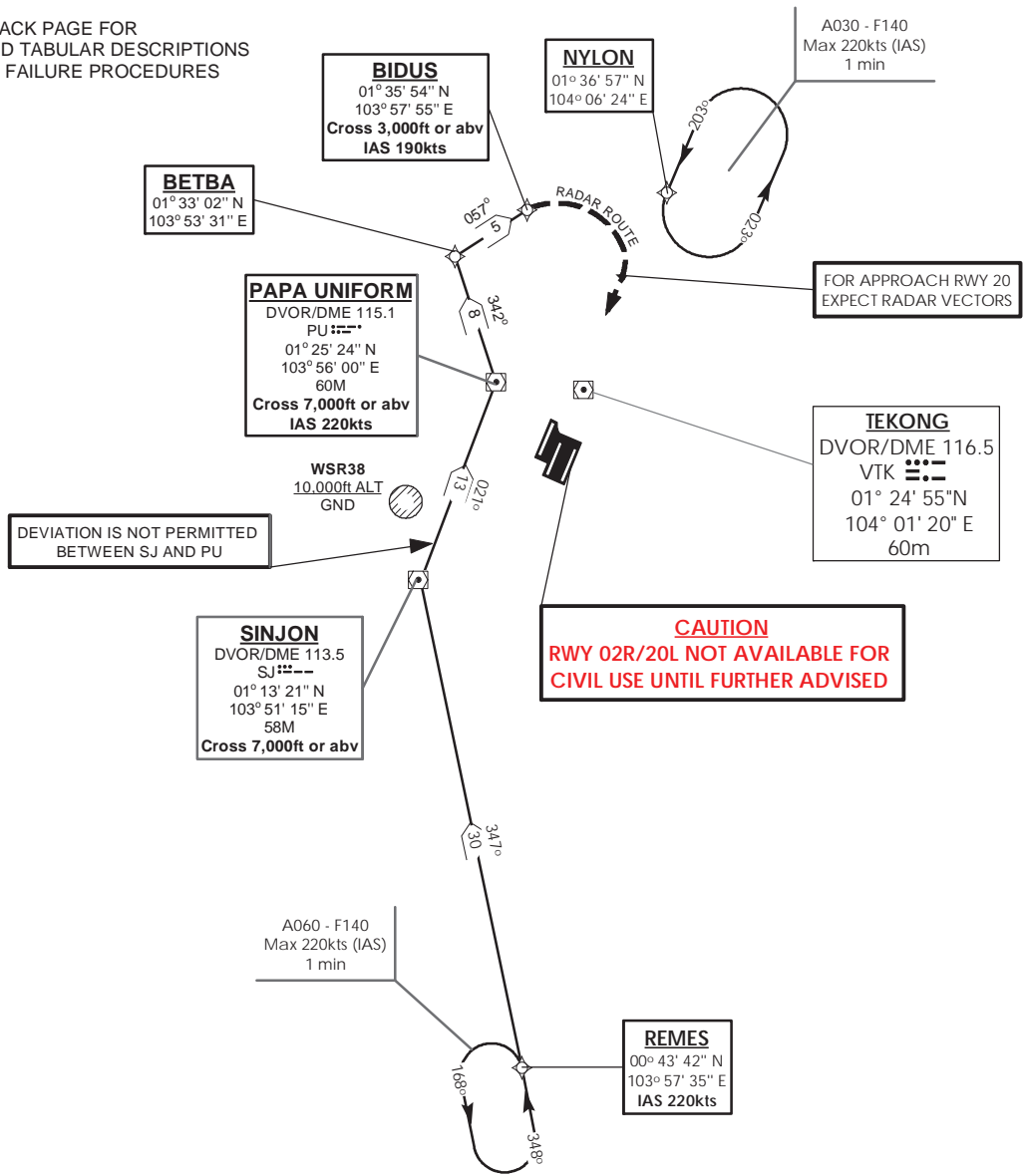
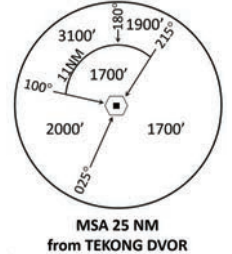
DISTANCES IN NM

CAUTION: RWY 02R/20L NOT AVAILABLE FOR CIVIL USE UNTIL FURTHER ADVISED

NOTE: RADAR REQUIRED

NOTE: RNAV-1 NAVIGATION SPECIFICATION GNSS REQUIRED

NOTE: REFER TO BACK PAGE FOR
- FORMAL AND TABULAR DESCRIPTIONS
- RADIO COM FAILURE PROCEDURES



NOT TO SCALE

31 OCT 2024

LEBAR 3B (STAR) RNAV GNSS RWY 20R/20C/20L - DESCRIPTIONS**Formal & Abbreviated Descriptions**

Formal Description	Abbreviated Description	Path Terminator	Fly-Over required
From REMES, speed 220kts.	REMES [K220] -	IF	N
To SJ at or above 7000ft, turn right.	SJ [A070+; R] -	TF	N
To PU at or above 7000ft, speed 220kts, turn left.	PU [A070+; K220; L] -	TF	N
To BETBA, turn right.	BETBA [R] -	TF	N
To BIDUS at or above 3000ft, speed 190kts.	BIDUS [A030+; K190]	TF	N

Tabular Descriptions

Path Term	Waypoint Name	Fly-Over	Course °M(°T)	Distance (NM)	Turn Direction	Altitude	Speed Limit	Navigation Spec
IF	REMES	-	-	-	-	-	K220	RNAV1
TF	SJ	-	347(347.4)	30.0	R	A070+	-	RNAV1
TF	PU	-	021(021.4)	13.0	L	A070+	K220	RNAV1
TF	BETBA	-	342(342.4)	8.0	R	-	-	RNAV1
TF	BIDUS	-	057(057.4)	5.0	-	A030+	K190	RNAV1

Radio Communications Failure Procedure

1	SET TRANSPONDER TO MODE A/C CODE 7600
2	<p>When cleared via LEBAR 3B by Singapore ATC</p> <p>(a) Maintain last assigned flight level or altitude and proceed on LEBAR 3B to BIDUS, then direct to NYLON</p> <p>(b) From NYLON commence descent and carry out appropriate landing procedure for RWY 20 as close as possible to EAT or ETA</p> <p>(c) If unable to effect a landing, refer to Singapore AIP for missed approach procedure</p>
3	<p>No clearance or instruction received from Singapore ATC</p> <p>- Refer to Singapore AIP for radio communications failure procedure</p>