

**STANDARD ARRIVAL CHART
RNAV (GNSS) -
INSTRUMENT (STAR)**

ACC 133.25
APP 124.6
119.3
TWR 118.6 / 118.25

TRANSITION ALTITUDE
11 000ft

D-ATIS AP ID-WSSS
ARR 128.025

**SINGAPORE/Singapore Changi
RWY 02L/C/R
ARAMA ONE ALPHA ARRIVAL
ARAMA 1A**

ELEV, ALT IN FEET
BEARINGS, TRACKS AND
RADIALS ARE MAGNETIC
VAR 0°23'E (2020)

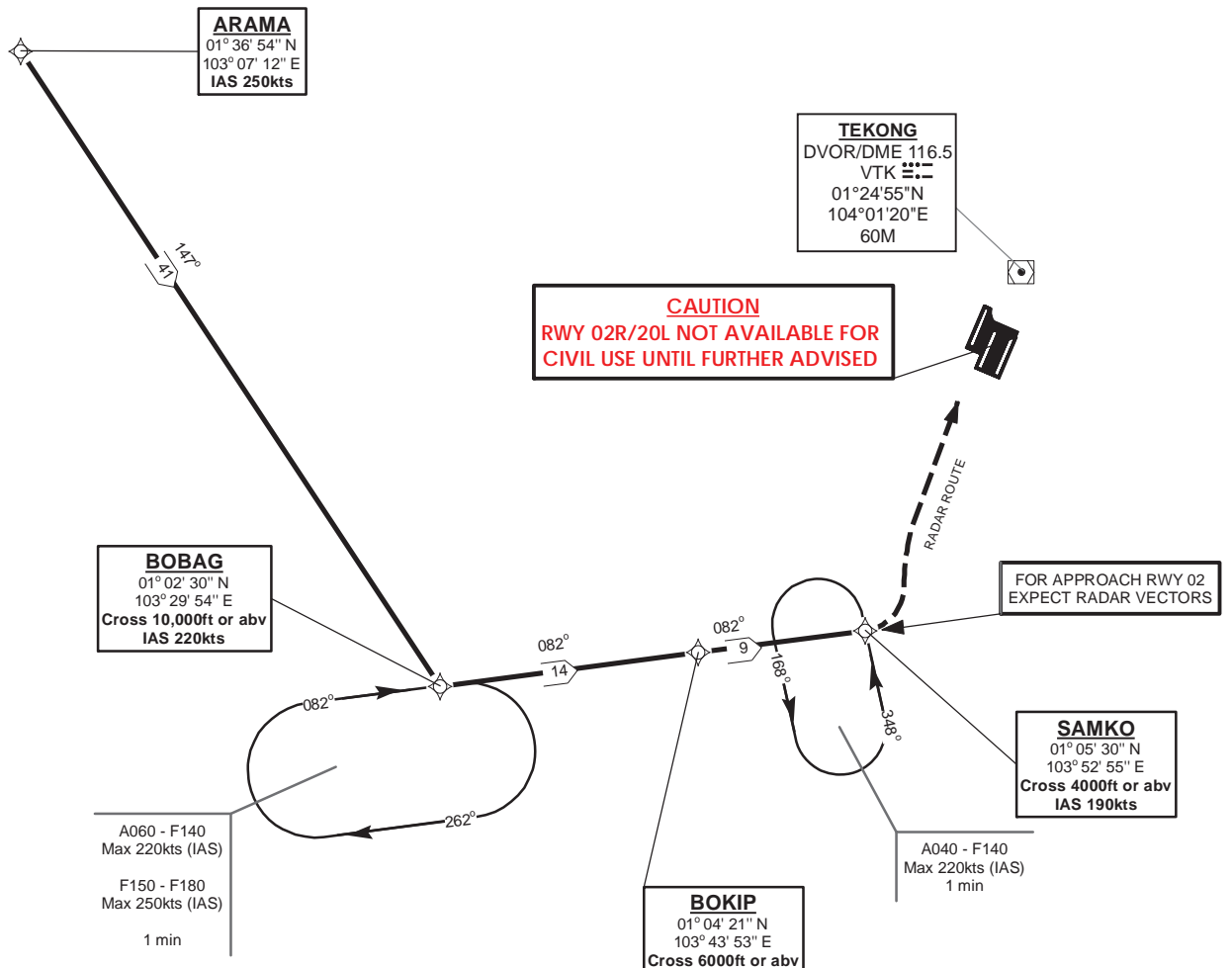
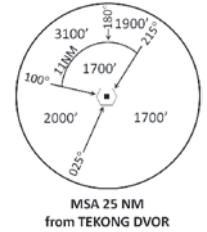
DISTANCES IN NM

**CAUTION: RWY 02R/20L NOT AVAILABLE FOR CIVIL USE UNTIL
FURTHER ADVISED**

NOTE: RADAR REQUIRED

NOTE: RNAV-1 NAVIGATION SPECIFICATION GNSS REQUIRED

NOTE: REFER TO BACK PAGE FOR
- FORMAL AND TABULAR DESCRIPTIONS
- RADIO COM FAILURE PROCEDURES



NOT TO SCALE

ARAMA 1A (STAR) RNAV GNSS RWY 02L/02C/02R - DESCRIPTIONS

Formal & Abbreviated Descriptions

Formal Description	Abbreviated Description	Path Terminator	Fly-Over required
From ARAMA, speed 250kts.	ARAMA [K250] -	IF	N
To BOBAG at or above 10000ft, speed 220kts, turn left.	BOBAG [A100+; K220; L] -	TF	N
To BOKIP at or above 6000ft.	BOKIP [A060+] -	TF	N
To SAMKO at or above 4000ft, speed 190kts.	SAMKO [A040+; K190]	TF	N

Tabular Descriptions

Path Term	Waypoint Name	Fly-Over	Course °M(°T)	Distance (NM)	Turn Direction	Altitude	Speed Limit	Navigation Spec
IF	ARAMA	-	-	-	-	-	K250	RNAV1
TF	BOBAG	-	147(147.4)	41.0	L	A100+	K220	RNAV1
TF	BOKIP	-	082(082.4)	14.0	-	A060+	-	RNAV1
TF	SAMKO	-	082(082.4)	9.0	-	A040+	K190	RNAV1

Radio Communications Failure Procedure

1	SET TRANSPONDER TO MODE A/C CODE 7600
2	<p>When cleared via ARAMA 1A by Singapore ATC</p> <p>(a) Maintain last assigned flight level or altitude and proceed on ARAMA 1A to SAMKO</p> <p>(b) From SAMKO commence descent and carry out appropriate landing procedure for RWY 02 as close as possible to EAT or ETA</p> <p>(c) If unable to effect a landing, refer to Singapore AIP for missed approach procedure</p>
3	<p>No clearance or instruction received from Singapore ATC</p> <p>- Refer to Singapore AIP for radio communications failure procedure</p>