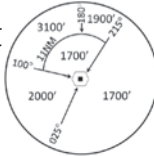


INSTRUMENT APPROACH CHART - ICAO

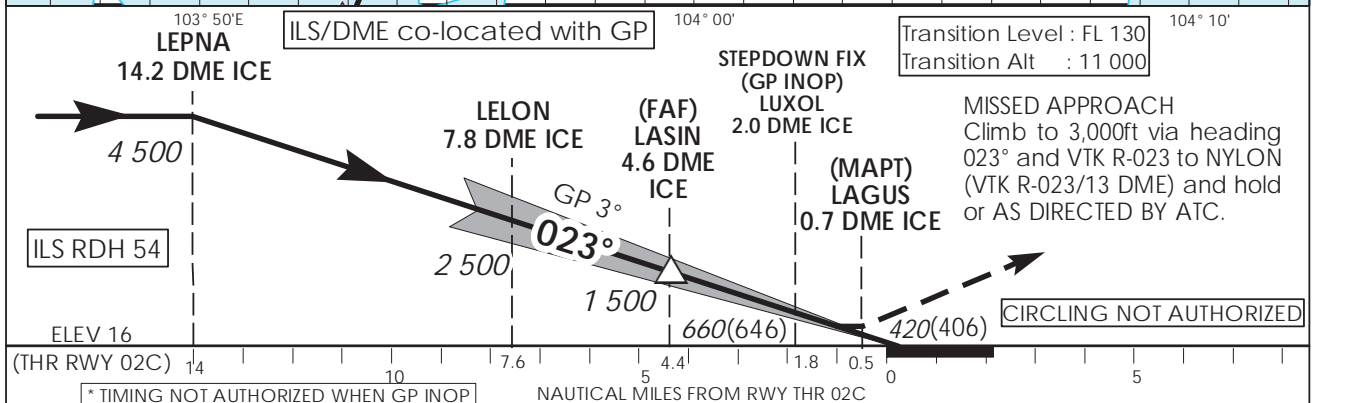
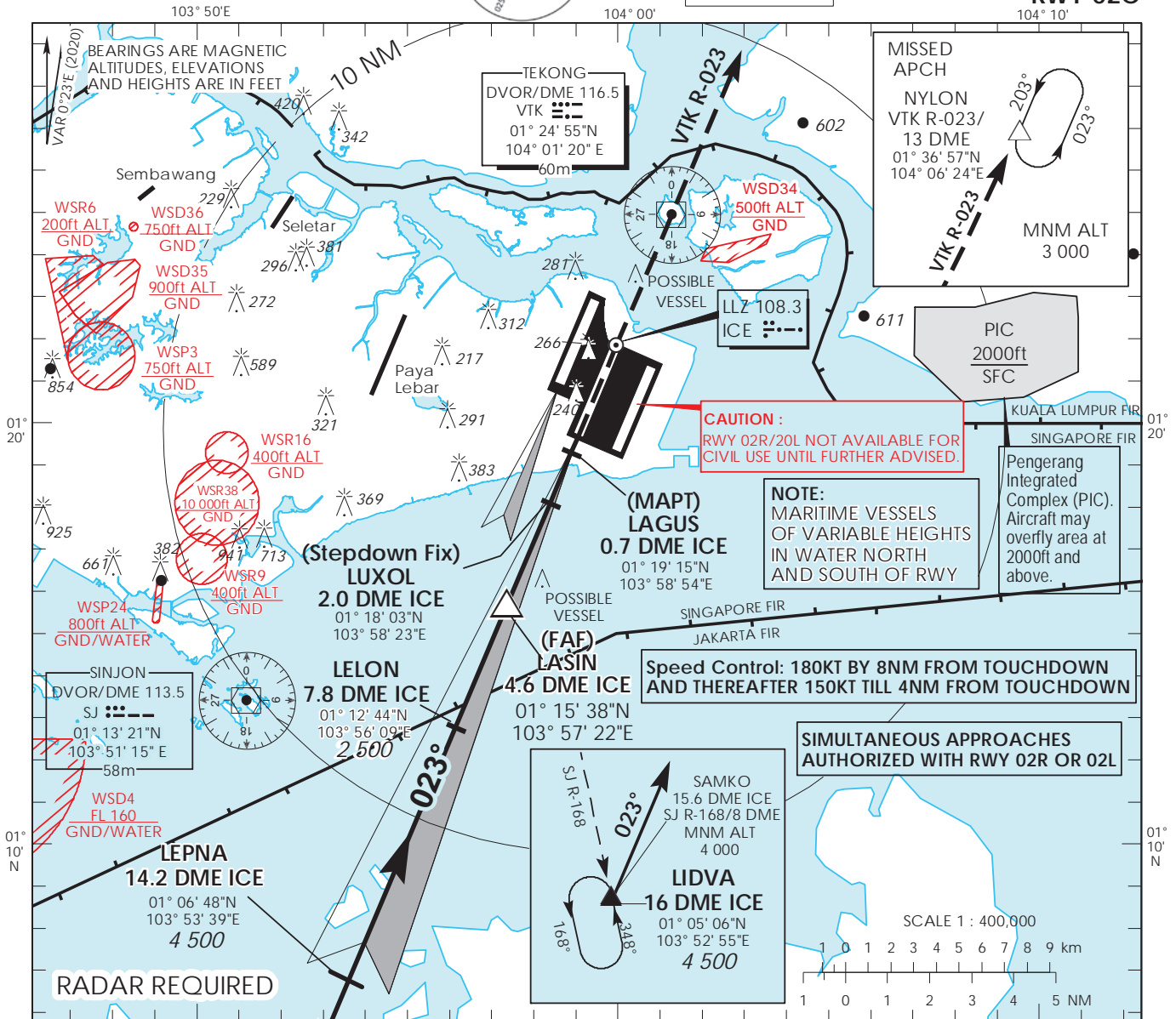
AERODROME ELEV 22ft
HEIGHT RELATED TO
THR RWY 02C - ELEV 16ft



MSA 25 NM
from TEKONG DVOR

| | |
|-------------------|---------|
| D-ATIS AP ID WSSS | 128.025 |
| APP | 124.05 |
| TWR | 119.3 |
| | 118.6 |
| | 118.25 |

SINGAPORE/ SINGAPORE CHANGI ICE ILS/DME RWY 02C



| OCA (OCH) | | | | | | |
|----------------------|--------------------------------|-----------|-----------|-----------|----------------|-----------|
| Category of Aircraft | A | B | C | D | D _L | |
| Straight-in | CAT I ILS | 170 (156) | 180 (166) | 196 (182) | 209 (195) | 212 (198) |
| | GP INOP (with stepdown fix) | 420 (406) | | | | |
| | GP INOP (without stepdown fix) | 660 (646) | | | | |
| Distance | 4 DME | | | 3 DME | | |
| Altitude (Height) | 1290 (1276) | | | 970 (956) | | |
| Speed | knots | 70 | 120 | 150 | 185 | |
| FAF - MAPT 3.9nm | min : s* | 3 : 21 | 1 : 57 | 1 : 34 | 1 : 16 | |
| Rate of descent/GS | ft/min | 370 | 635 | 795 | 980 | |