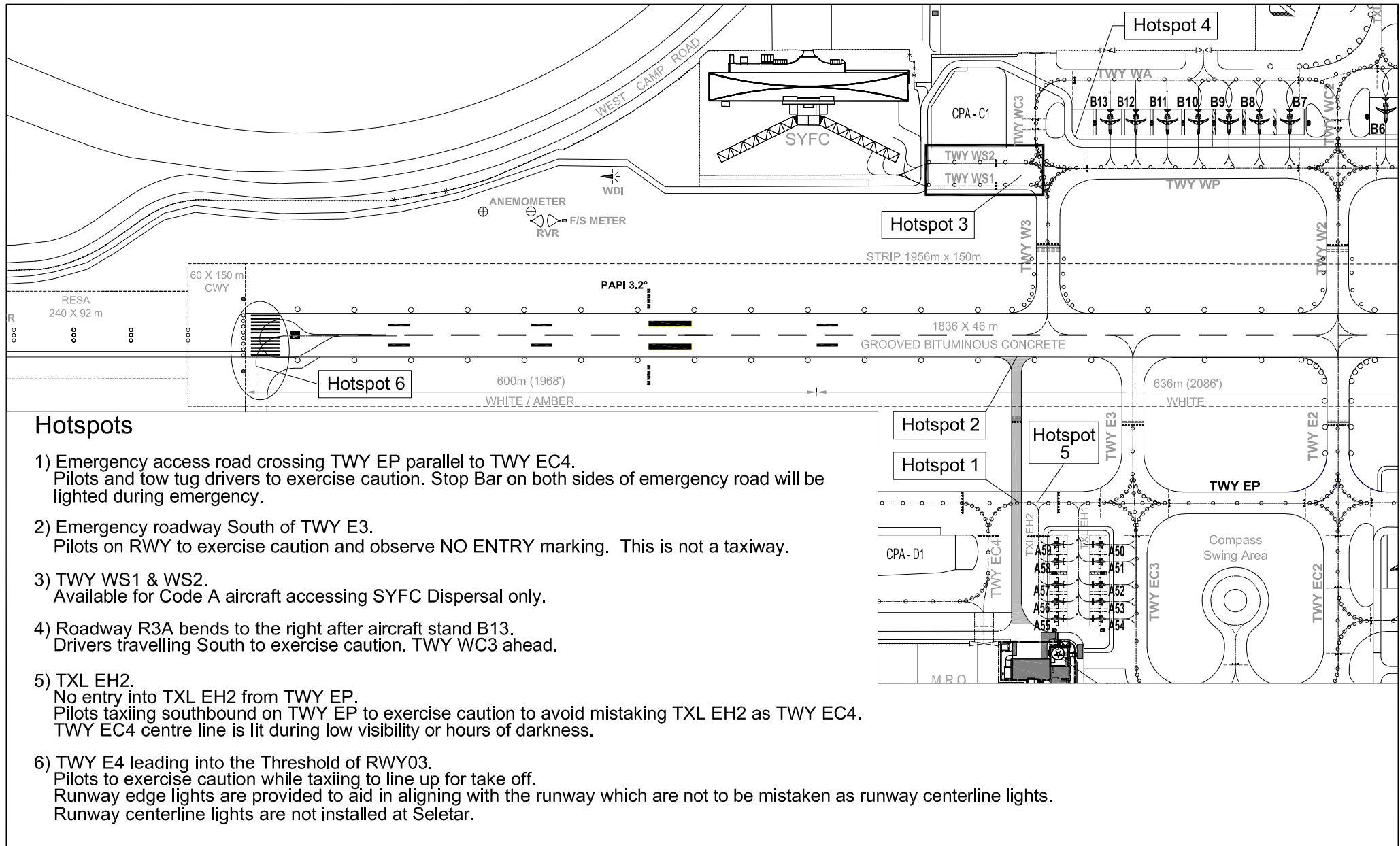


AERODROME HOTSPOTS



Hotspots

- 1) Emergency access road crossing TWY EP parallel to TWY EC4.
Pilots and tow tug drivers to exercise caution. Stop Bar on both sides of emergency road will be lighted during emergency.
- 2) Emergency roadway South of TWY E3.
Pilots on RWY to exercise caution and observe NO ENTRY marking. This is not a taxiway.
- 3) TWY WS1 & WS2.
Available for Code A aircraft accessing SYFC Dispersal only.
- 4) Roadway R3A bends to the right after aircraft stand B13.
Drivers travelling South to exercise caution. TWY WC3 ahead.
- 5) TXL EH2.
No entry into TXL EH2 from TWY EP.
Pilots taxiing southbound on TWY EP to exercise caution to avoid mistaking TXL EH2 as TWY EC4.
TWY EC4 centre line is lit during low visibility or hours of darkness.
- 6) TWY E4 leading into the Threshold of RWY03.
Pilots to exercise caution while taxiing to line up for take off.
Runway edge lights are provided to aid in aligning with the runway which are not to be mistaken as runway centerline lights.
Runway centerline lights are not installed at Seletar.