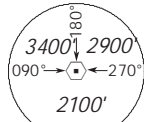


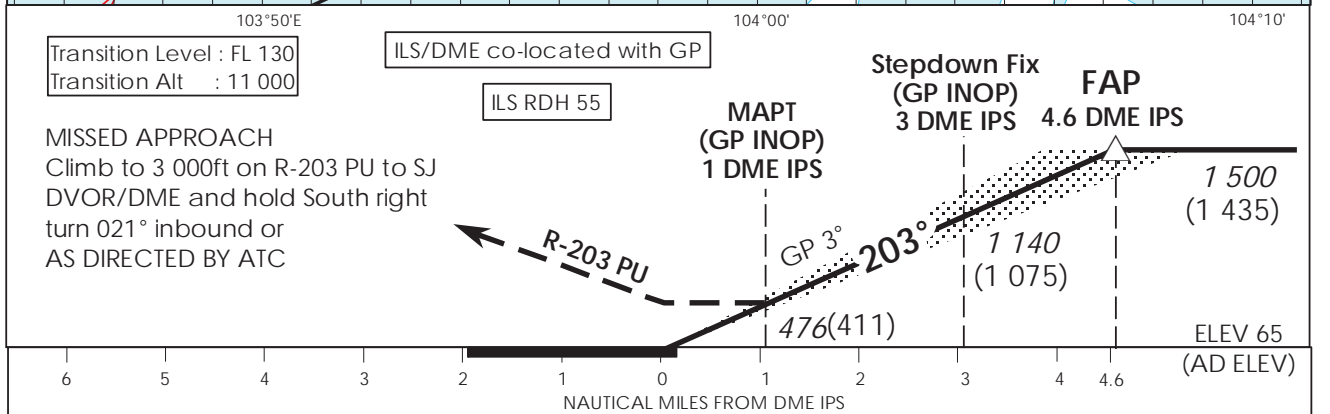
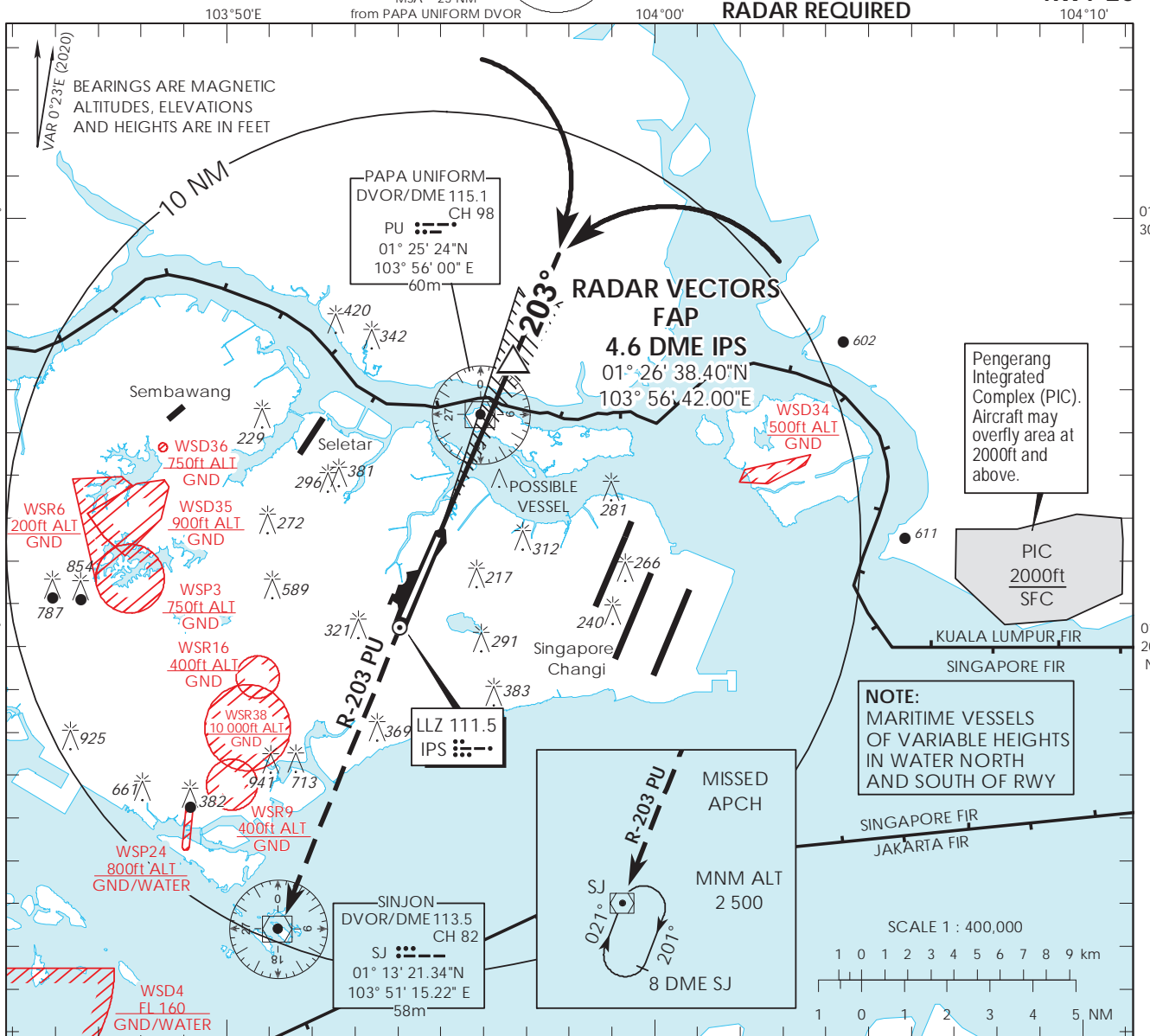
INSTRUMENT APPROACH CHART - ICAO

AERODROME ELEV 65ft
HEIGHT RELATED TO THR RWY 20 - 65ft



ATIS Paya Lebar	148.9
Singapore APP	124.05
Paya Lebar APP	119.9 298.0
Seletar APP	126.025
Paya Lebar TWR	118.05 263.1
Ground Control	130.8 296.0

SINGAPORE/PAYA LEBAR IPS ILS/DME RWY 20



Transition Level : FL 130
Transition Alt : 11 000

ILS/DME co-located with GP

ILS RDH 55

MISSED APPROACH
Climb to 3 000ft on R-203 PU to SJ DVOR/DME and hold South right turn 021° inbound or AS DIRECTED BY ATC

Stepdown Fix (GP INOP) 3 DME IPS
FAP 4.6 DME IPS

		OCA (OCH)			
Category of Aircraft		A	B	C	D
Straight-in	CAT I ILS	194 (129)	204 (139)	214 (149)	224 (159)
	GP INOP	476 (411)			
Distance		4 DME	3 DME	2 DME	
Altitude (Height)		1300 (1235)	1140 (1075)	820 (755)	
Speed	knots	70	120	150	185
FAF - MAPT 3.6nm	min : s	3 : 06	1 : 48	1 : 27	1 : 11
Rate of descent/GS	ft/min	370	635	795	980