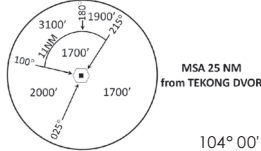


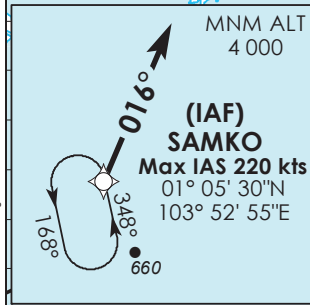
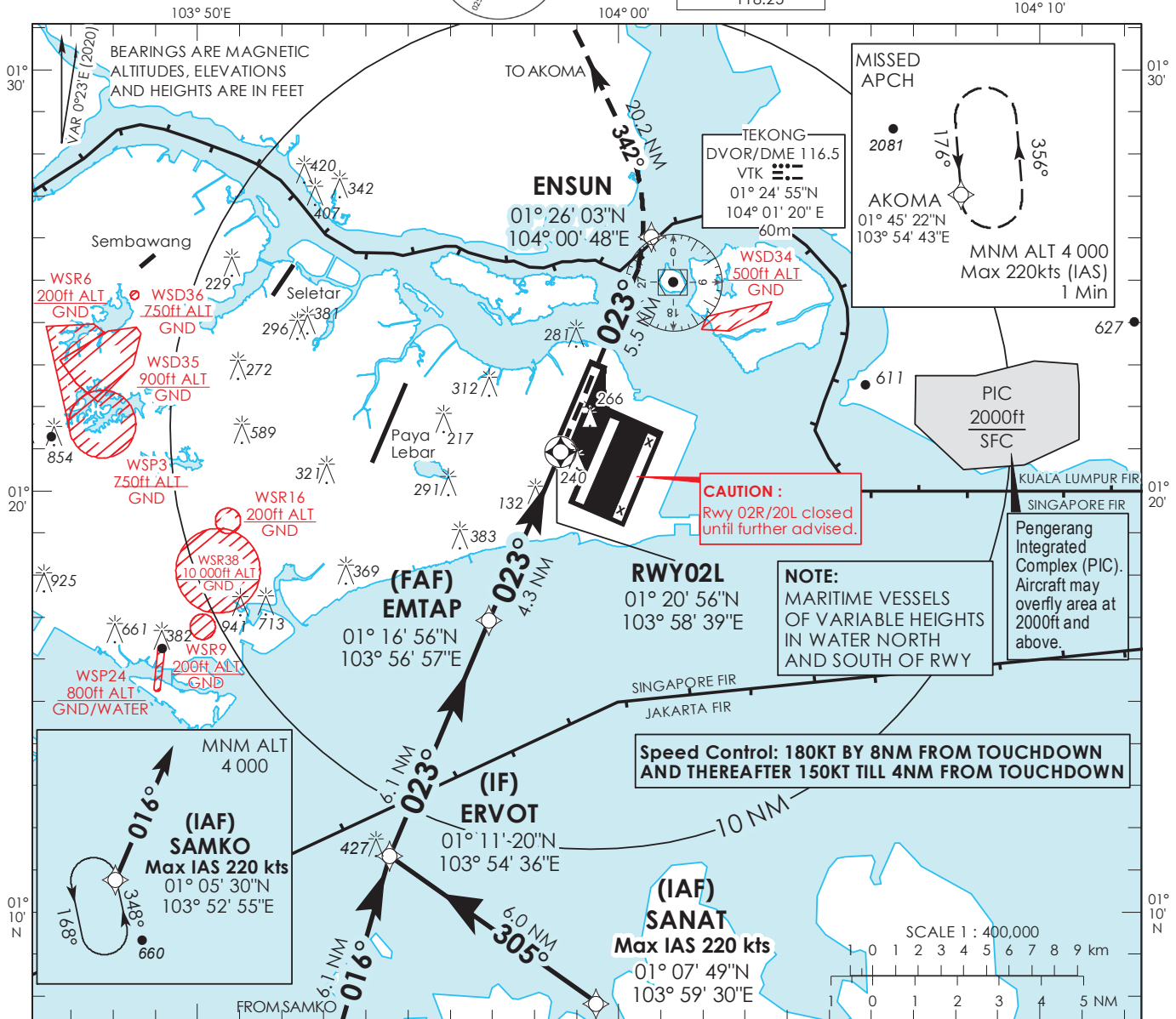
**INSTRUMENT APPROACH CHART - ICAO**

AERODROME ELEV **22ft**  
HEIGHT RELATED TO  
THR RWY 02L - ELEV **22ft**



D-ATIS	AP ID WSSS
	128.025
APP	124.05
	119.3
TWR	118.6
	118.25

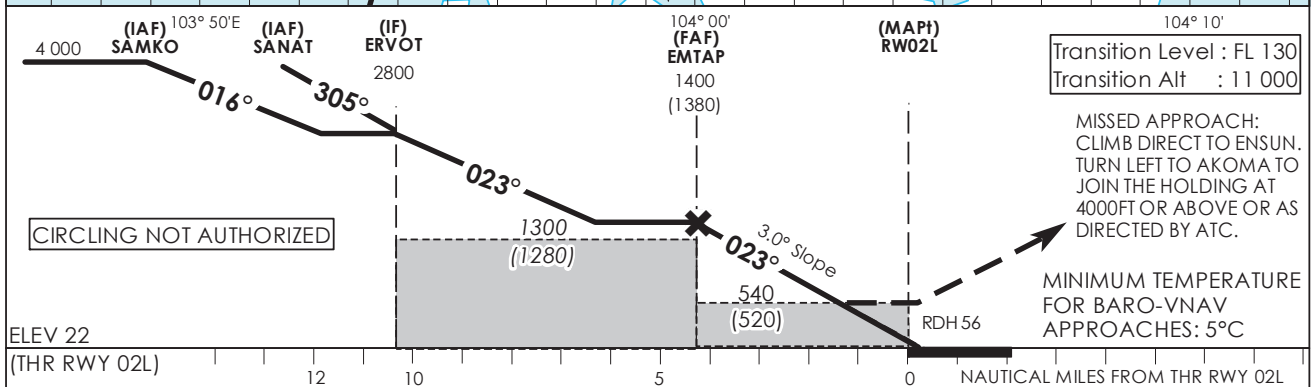
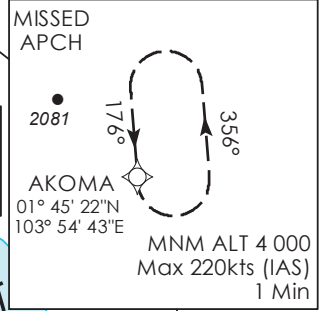
**SINGAPORE/ SINGAPORE CHANGI RNP RWY 02L**



**Speed Control: 180KT BY 8NM FROM TOUCHDOWN AND THEREAFTER 150KT TILL 4NM FROM TOUCHDOWN**

**NOTE:** MARITIME VESSELS OF VARIABLE HEIGHTS IN WATER NORTH AND SOUTH OF RWY

**CAUTION:** Rwy 02R/20L closed until further advised.



		OCA (OCH)						
		A	B	C	D			
Category of Aircraft								
LNAV/VNAV	2.5%		<b>450 (430)</b>					
LNAV	2.5%		<b>540 (520)</b>					
Fix		SAMKO	SANAT	ERVOT	EMTAP	RW02L	ENSUN	AKOMA
Altitude (Height)		<b>4000 (3978)</b>	<b>4000 (3978)</b>	<b>2800 (2778)</b>	<b>1400 (1378)</b>	<b>540 (518)</b>	<b>880 (858)</b>	<b>4000 (3978)</b>
Speed	knots		80	100	120	140	160	180
FAF - MAPt	4.3nm min : s		<b>3 : 14</b>	<b>2 : 35</b>	<b>2 : 09</b>	<b>1 : 51</b>	<b>1 : 37</b>	<b>1 : 26</b>
Rate of descent/GS	ft/min		<b>424</b>	<b>530</b>	<b>637</b>	<b>743</b>	<b>849</b>	<b>955</b>

**SINGAPORE CHANGI RNP-APCH RWY 02L – Approach from SAMKO**

Path Terminator	Waypoint	Fly-Over	Course °M (°T)	Magnetic Variation	Distance (NM)	Turn Direction	Altitude (FT)	Speed Limit (KT)	VPA/TCH(FT)	Navigation Specification
IF	SAMKO	-	-	-0.4	-	-	A040+	220	-	RNP APCH
TF	ERVOT	-	016 (016.4)	-0.4	6.1	R	A028+	-	-	RNP APCH
TF	EMTAP	-	023 (023.4)	-0.4	6.1	-	A014+	-	-	RNP APCH
TF	RW02L	Y	023 (023.4)	-0.4	4.3	-	-	-	-3.0° / 50	RNP APCH
DF	ENSUN	-	-	-0.4	-	L	-	-	-	RNP APCH
TF	AKOMA	-	342 (342.4)	-0.4	20.2	-	A040+	-	-	RNP APCH

**SINGAPORE CHANGI RNP-APCH RWY 02L – Approach from SANAT**

Path Terminator	Waypoint	Fly-Over	Course °M (°T)	Magnetic Variation	Distance (NM)	Turn Direction	Altitude (FT)	Speed Limit (KT)	VPA/TCH(FT)	Navigation Specification
IF	SANAT	-	-	-0.4	-	-	A040+	220	-	RNP APCH
TF	ERVOT	-	305 (305.4)	-0.4	6.0	R	A028+	-	-	RNP APCH
TF	EMTAP	-	023 (023.4)	-0.4	6.1	-	A014+	-	-	RNP APCH
TF	RW02L	Y	023 (023.4)	-0.4	4.3	-	-	-	-3.0° / 50	RNP APCH
DF	ENSUN	-	-	-0.4	-	L	-	-	-	RNP APCH
TF	AKOMA	-	342 (342.4)	-0.4	20.2	-	A040+	-	-	RNP APCH

**Waypoint Coordinates**

Name	Latitude	Longitude
SAMKO (IAF)	01° 05' 30" N	103° 52' 55" E
SANAT (IAF)	01° 07' 49" N	103° 59' 30" E
ERVOT (IF)	01° 11' 20" N	103° 54' 36" E
EMTAP (FAF)	01° 16' 56" N	103° 56' 57" E
RW02L	01° 20' 56" N	103° 58' 39" E
ENSUN	01° 26' 03" N	104° 00' 48" E
AKOMA	01° 45' 22" N	103° 54' 43" E