

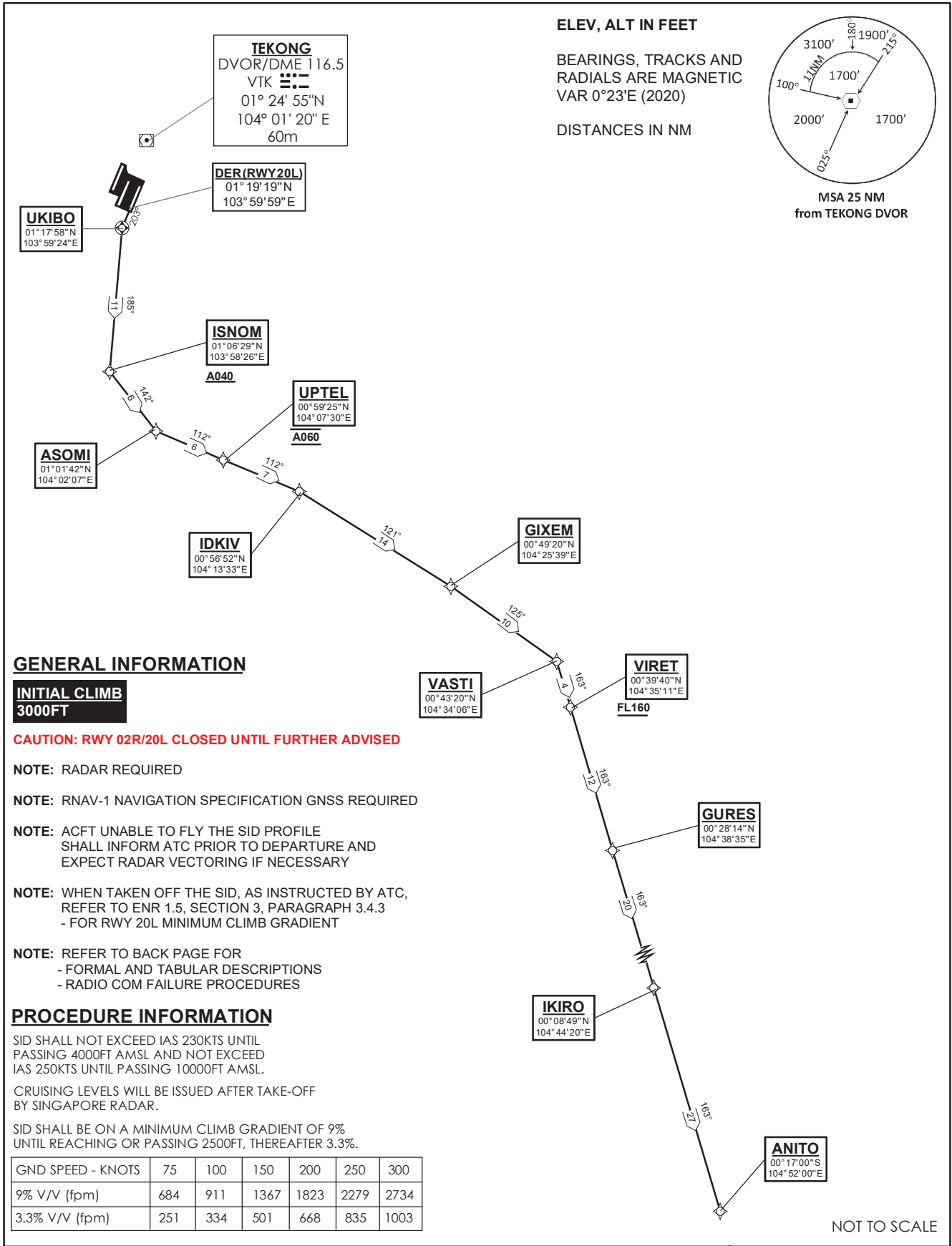
**STANDARD DEPARTURE CHART**  
**RNAV (GNSS) -**  
**INSTRUMENT (SID)**

TWR 118.6 / 118.25  
APP 120.3  
124.05  
ACC 134.4

TRANSITION ALTITUDE  
11 000ft

D-ATIS AP ID-WSSS  
128.6

**SINGAPORE/Singapore Changi**  
**RWY 20L**  
**ANITO DEPARTURES**  
**ANITO 1D**



### ANITO 1D (SID) RNAV GNSS RWY 20L - DESCRIPTIONS

#### Formal & Abbreviated Descriptions

| Formal Description                      | Abbreviated Description | Path Terminator | Fly-Over required |
|---|-------------------------|-----------------|-------------------|
| To UKIBO on course 203°, turn left.     | UKIBO [M203; L] -       | CF              | N                 |
| To ISNOM at or above 4000ft, turn left. | ISNOM [A040+; L] -      | TF              | N                 |
| To ASOMI, turn left.                    | ASOMI [L] -             | TF              | N                 |
| To UPTTEL at 6000ft.                    | UPTTEL [@A060] -        | TF              | N                 |
| To IDKIV, turn right.                   | IDKIV [R] -             | TF              | N                 |
| To GIXEM, turn right.                   | GIXEM [R] -             | TF              | N                 |
| To VASTI, turn right.                   | VASTI [R] -             | TF              | N                 |
| To VIRET at or above FL160.             | VIRET [FL160+] -        | TF              | N                 |
| To GURES.                               | GURES -                 | TF              | N                 |
| To IKIRO.                               | IKIRO -                 | TF              | N                 |
| To ANITO.                               | ANITO                   | TF              | N                 |

#### Tabular Descriptions

| Path Term | Waypoint Name | Fly-Over | Course °M(°T) | Distance (NM) | Turn Direction | Altitude | Speed Limit | Navigation Spec |
|-----------|---------------|----------|---------------|---------------|----------------|----------|-------------|-----------------|
| CF        | UKIBO         | Y        | 203(203.4)    | 1.5           | L              | -        | -           | RNAV1           |
| TF        | ISNOM         | -        | 185(185.4)    | 11.0          | L              | A040+    | -           | RNAV1           |
| TF        | ASOMI         | -        | 142(142.4)    | 6.0           | L              | -        | -           | RNAV1           |
| TF        | UPTTEL        | -        | 112(112.4)    | 6.0           | -              | @A060    | -           | RNAV1           |
| TF        | IDKIV         | -        | 112(112.4)    | 7.0           | R              | -        | -           | RNAV1           |
| TF        | GIXEM         | -        | 121(121.4)    | 14.0          | R              | -        | -           | RNAV1           |
| TF        | VASTI         | -        | 125(125.4)    | 10.0          | R              | -        | -           | RNAV1           |
| TF        | VIRET         | -        | 163(163.4)    | 4.0           | -              | FL160+   | -           | RNAV1           |
| TF        | GURES         | -        | 163(163.4)    | 12.0          | -              | -        | -           | RNAV1           |
| TF        | IKIRO         | -        | 163(163.4)    | 20.0          | -              | -        | -           | RNAV1           |
| TF        | ANITO         | -        | 163(163.4)    | 27.0          | -              | -        | -           | RNAV1           |

#### Radio Communications Failure Procedure

|          |  |
|----------|--|
| <b>1</b> | <b>SET TRANSPONDER TO MODE A/C CODE 7600</b>   |
| <b>2</b> | <b>COMMUNICATIONS FAILURE OCCURS IMMEDIATELY AFTER DEPARTURE:</b><br>PROCEED DIRECT TO SAMKO HOLDING AREA (SHA) CLIMBING TO THE LAST ASSIGNED ALTITUDE, THEREAFTER REFER TO SINGAPORE AIP ON RADIO COMMUNICATIONS FAILURE PROCEDURE. |