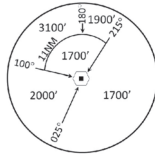


INSTRUMENT APPROACH CHART - ICAO

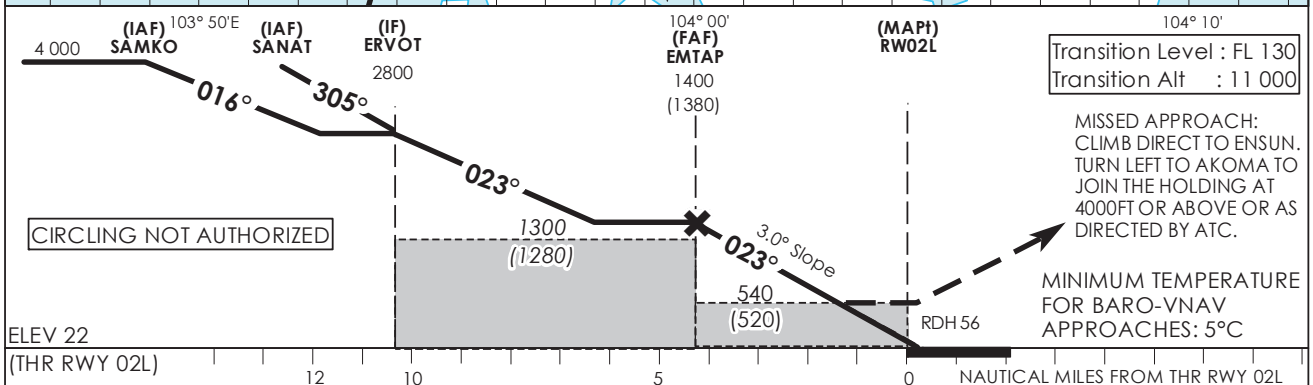
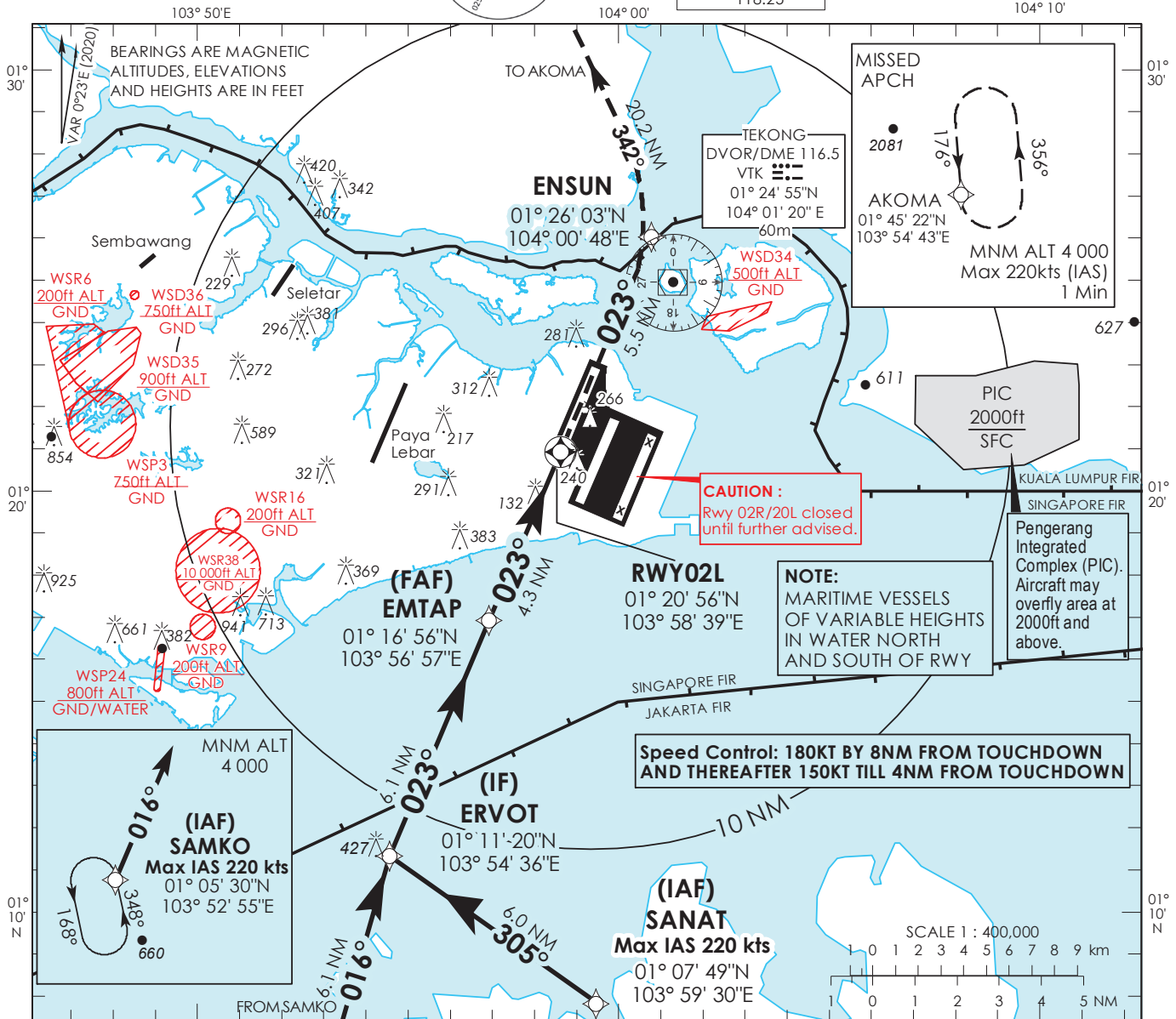
AERODROME ELEV **22ft**
HEIGHT RELATED TO
THR RWY 02L - ELEV **22ft**



MSA 25 NM
from TEKONG DVOR

D-ATIS	AP ID WSSS
	128.025
APP	124.05
	119.3
TWR	118.6
	118.25

SINGAPORE/ SINGAPORE CHANGI RNP RWY 02L



		OCA (OCH)						
Category of Aircraft		A	B	C	D			
LNAV/VNAV	2.5%				450 (430)			
LNAV	2.5%				540 (520)			
Fix		SAMKO	SANAT	ERVOT	EMTAP	RWY02L	ENSUN	AKOMA
Altitude (Height)		4000 (3978)	4000 (3978)	2800 (2778)	1400 (1378)	540 (518)	880 (858)	4000 (3978)
Speed	knots	80	100	120	140	140	160	180
FAF - MAPt 4.3nm	min : s	3 : 14	2 : 35	2 : 09	1 : 51	1 : 37	1 : 37	1 : 26
Rate of descent/GS	ft/min		424	530	637	743	849	955

SINGAPORE CHANGI RNP-APCH RWY 02L – Approach from SAMKO

Path Terminator	Waypoint	Fly-Over	Course °M (°T)	Magnetic Variation	Distance (NM)	Turn Direction	Altitude (FT)	Speed Limit (KT)	VPA/TCH(FT)	Navigation Specification
IF	SAMKO	-	-	-0.4	-	-	A040+	220	-	RNP APCH
TF	ERVOT	-	016 (016.4)	-0.4	6.1	R	A028+	-	-	RNP APCH
TF	EMTAP	-	023 (023.4)	-0.4	6.1	-	A014+	-	-	RNP APCH
TF	RW02L	Y	023 (023.4)	-0.4	4.3	-	-	-	-3.0° / 50	RNP APCH
DF	ENSUN	-	-	-0.4	-	L	-	-	-	RNP APCH
TF	AKOMA	-	342 (342.4)	-0.4	20.2	-	A040+	220	-	RNP APCH

SINGAPORE CHANGI RNP-APCH RWY 02L – Approach from SANAT

Path Terminator	Waypoint	Fly-Over	Course °M (°T)	Magnetic Variation	Distance (NM)	Turn Direction	Altitude (FT)	Speed Limit (KT)	VPA/TCH(FT)	Navigation Specification
IF	SANAT	-	-	-0.4	-	-	A040+	220	-	RNP APCH
TF	ERVOT	-	305 (305.4)	-0.4	6.0	R	A028+	-	-	RNP APCH
TF	EMTAP	-	023 (023.4)	-0.4	6.1	-	A014+	-	-	RNP APCH
TF	RW02L	Y	023 (023.4)	-0.4	4.3	-	-	-	-3.0° / 50	RNP APCH
DF	ENSUN	-	-	-0.4	-	L	-	-	-	RNP APCH
TF	AKOMA	-	342 (342.4)	-0.4	20.2	-	A040+	220	-	RNP APCH

Waypoint Coordinates

Name	Latitude	Longitude
SAMKO (IAF)	01° 05' 30" N	103° 52' 55" E
SANAT (IAF)	01° 07' 49" N	103° 59' 30" E
ERVOT (IF)	01° 11' 20" N	103° 54' 36" E
EMTAP (FAF)	01° 16' 56" N	103° 56' 57" E
RW02L	01° 20' 56" N	103° 58' 39" E
ENSUN	01° 26' 03" N	104° 00' 48" E
AKOMA	01° 45' 22" N	103° 54' 43" E