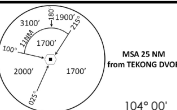


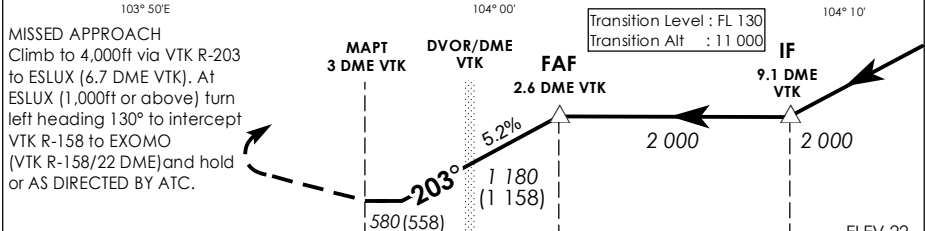
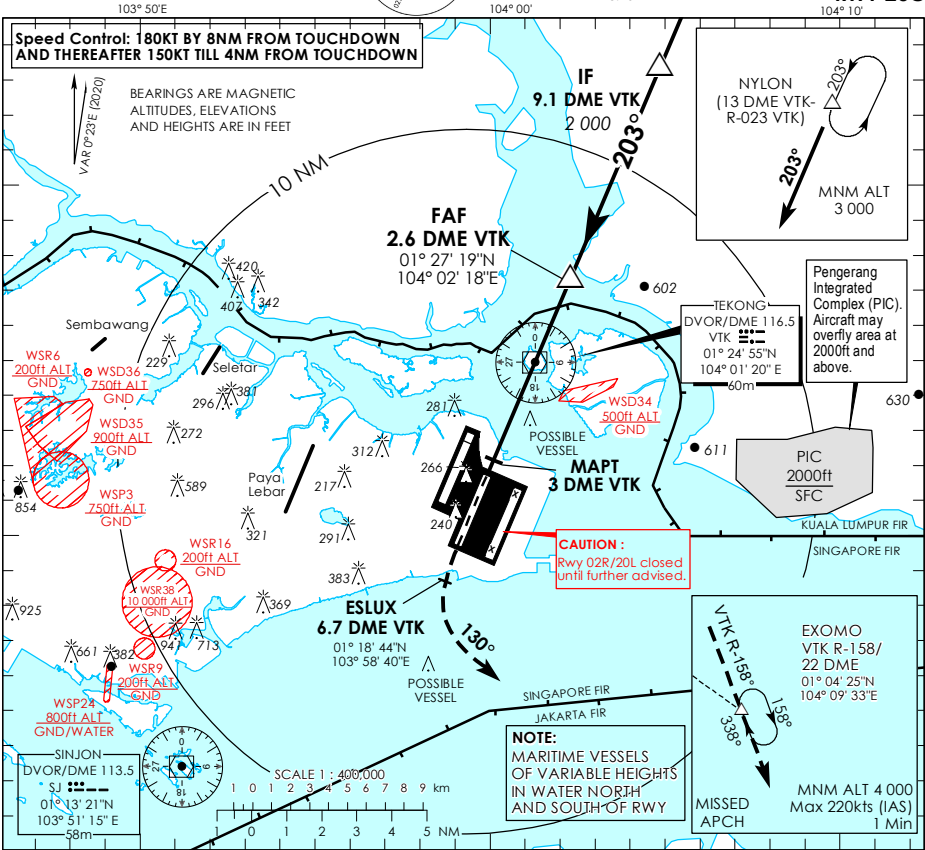
**INSTRUMENT  
APPROACH  
CHART - ICAO**

AERODROME ELEV **22ft**  
HEIGHT RELATED TO  
AD ELEV



D-TAS AP ID WSSS	128.025
APP	124.05
TWR	119.3
	118.6
	118.25

**SINGAPORE/  
SINGAPORE CHANGI  
VTK DVOR/DME  
RWY 20C**



MISSED APPROACH  
Climb to 4,000ft via VTK R-203 to ESЛУX (6.7 DME VTK). At ESЛУX (1,000ft or above) turn left heading 130° to intercept VTK R-158 to EXOMO (VTK R-158/22 DME) and hold or AS DIRECTED BY ATC.

OCA (OCH)				
Category of Aircraft	A	B	C	D
Straight-in	580 (558)			
Distance	2 DME	1 DME	VTK	1 DME
Altitude (Height)	1820 (1798)	1500 (1478)	1180 (1158)	860 (838)
Speed	knots	70	120	150
FAF - MAPT 5.6nm	min : s	4 : 48	2 : 48	2 : 15
Rate of descent/GS	ft/min	370	635	795
			980	