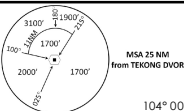


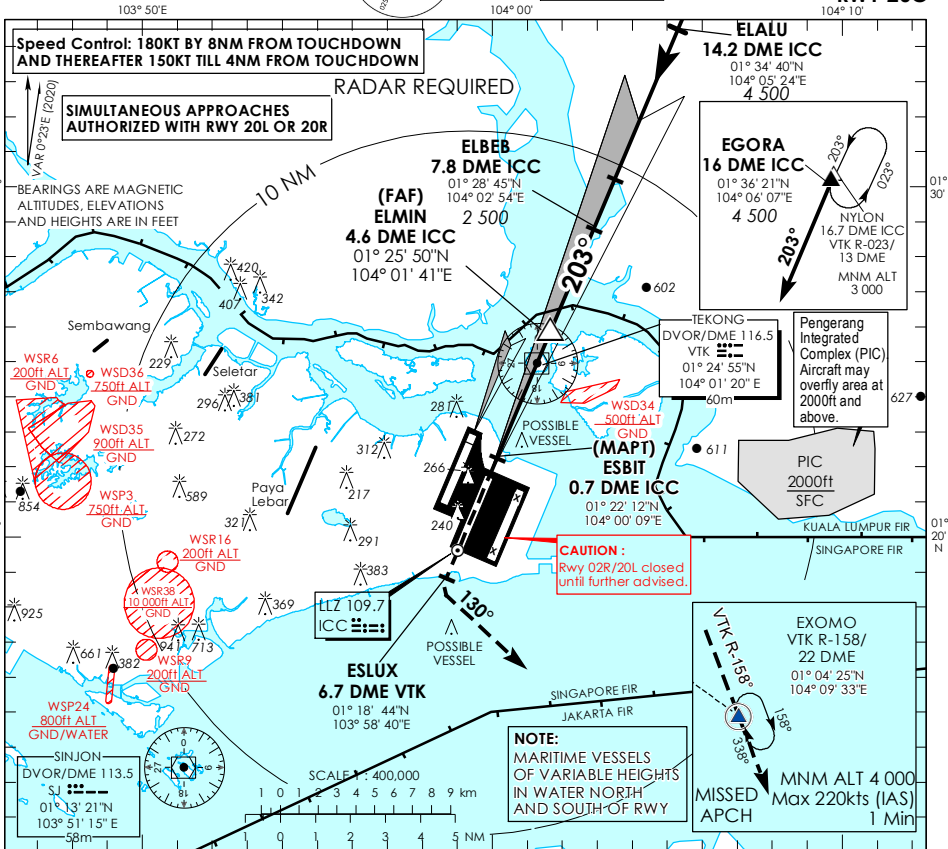
INSTRUMENT APPROACH CHART - ICAO

AERODROME ELEV 22ft
HEIGHT RELATED TO
THR RWY 20C - ELEV 16ft



| | | |
|--------|---------|--------|
| D-ATIS | AP ID | WSSS |
| APP | 128.025 | 124.05 |
| TWR | 119.3 | 118.4 |
| | 118.25 | |

SINGAPORE/ SINGAPORE CHANGI ICC RLS/DME RWY 20C



This procedure requires a missed approach climb gradient of 2.8% (171 ft/NM) until passing 2,000ft. For aircraft which can only achieve a 2.5% (152 ft/NM) climb gradient, the CAT I OCA (OCH) is 315ft (300ft).

MISSED APPROACH
Climb to 4,000ft via VTK R-203 to ESUX (6.7 DME VTK). At ESUX turn left heading 130° to intercept VTK R-158 to EXOMO (VTK R-158/22 DME) and hold or AS DIRECTED BY ATC.

ILS/DME co-located with GP

ELEV 16

(THR RWY 20C)

CIRCLING NOT AUTHORIZED



| Category of Aircraft | OCA (OCH) | | | | | |
|----------------------|------------|-----------|-----------|-----------|----------------|-----------|
| | A | B | C | D | D _L | |
| Straight-in | CAT I ILS | 166 (151) | 180 (165) | 196 (181) | 209 (194) | 212 (197) |
| | CAT II ILS | 71 (56) | 78 (63) | 91 (76) | 101 (86) | 107 (92) |
| | GP INOP | 420 (405) | | | | |

| Distance | 4 DME | | 3 DME | | 2 DME | |
|--------------------|-------------|--------|-----------|--------|-----------|--|
| Altitude (Height) | 1290 (1275) | | 980 (965) | | 660 (645) | |
| Speed | knots | 70 | 120 | 150 | 185 | |
| FAF - MAPT 3.9nm | min : s * | 3 : 21 | 1 : 57 | 1 : 34 | 1 : 16 | |
| Rate of descent/GS | ft/min | 370 | 635 | 795 | 980 | |