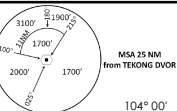


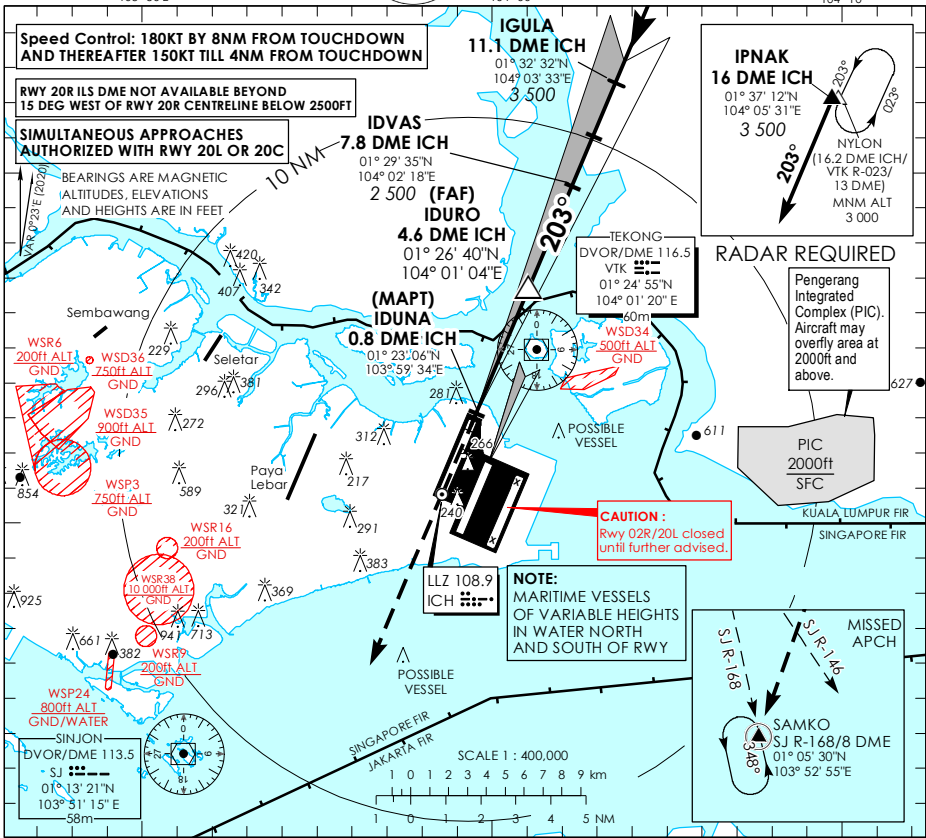
**INSTRUMENT APPROACH CHART - ICAO**

AERODROME ELEV **22ft**  
HEIGHT RELATED TO  
DTHR RWY 20R - ELEV **13ft**

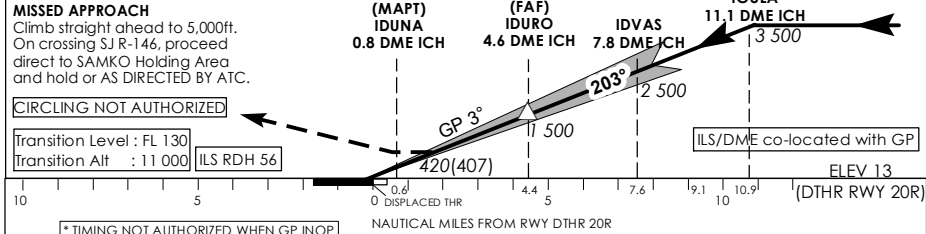


|                  |         |
|------------------|---------|
| D-TIS AP ID WSSS | 128.025 |
| APP              | 124.05  |
| TWR              | 119.3   |
|                  | 118.6   |
|                  | 118.25  |

**SINGAPORE/ SINGAPORE CHANGI ICH ILS/DME RWY 20R**



**This procedure requires a missed approach climb gradient of 3.7% (225 ft/NM) until passing 2,500ft. For aircraft which can only achieve a 2.5% (152 ft/NM) climb gradient, the CAT I OCA (OCH) is 693ft (680ft).**



**\*TIMING NOT AUTHORIZED WHEN GP INOP**

| Category of Aircraft |           | OCA (OCH)   |           |           |           |                |
|----------------------|-----------|-------------|-----------|-----------|-----------|----------------|
|                      |           | A           | B         | C         | D         | D <sub>L</sub> |
| Straight-in          | CAT I ILS | 152 (139)   | 159 (146) | 179 (166) | 192 (179) | 195 (182)      |
|                      | GP INOP   |             |           | 420 (407) |           |                |
| Distance             |           | 4 DME       |           | 3 DME     | 2 DME     |                |
| Altitude (Height)    |           | 1290 (1277) |           | 970 (957) | 650 (637) |                |
| Speed                |           | 70 knots    |           | 120       | 150       |                |
| FAF - MAPT 3.9nm     | min : s * | 3 : 21      |           | 1 : 57    | 1 : 34    |                |
| Rate of descent/GS   | ft/min    | 370         |           | 635       | 795       |                |
|                      |           |             |           |           | 980       |                |