

**INSTRUMENT APPROACH CHART**

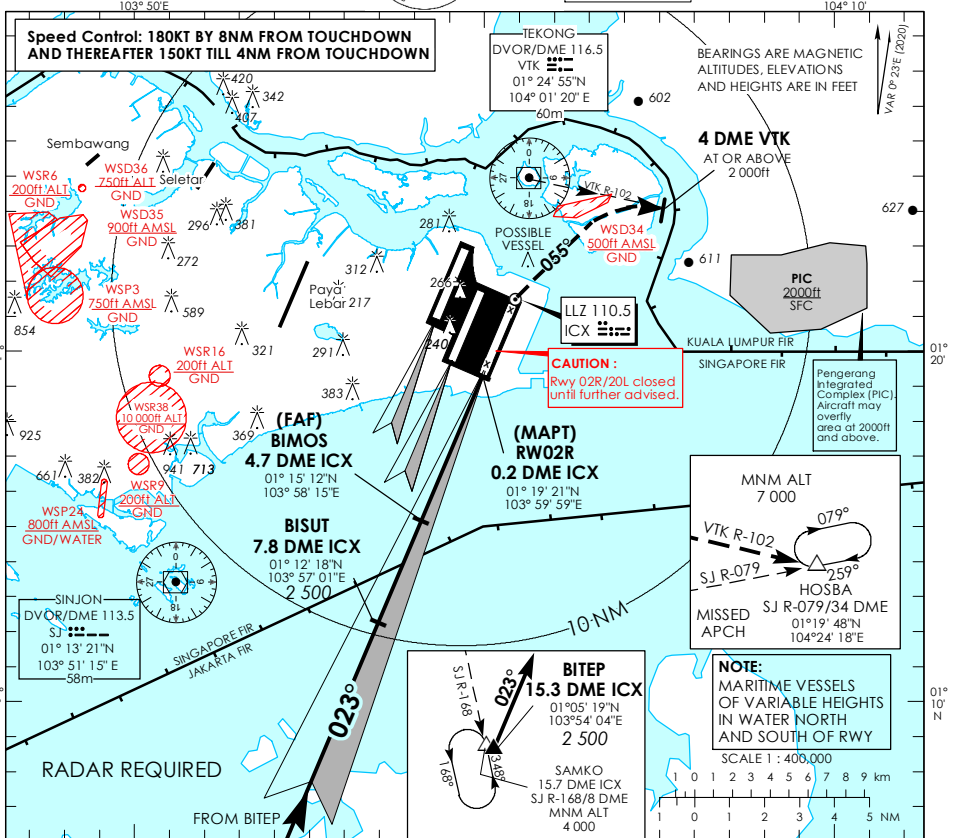
AERODROME ELEV 22ft  
HEIGHT RELATED TO  
THR RWY 02R - ELEV 16ft



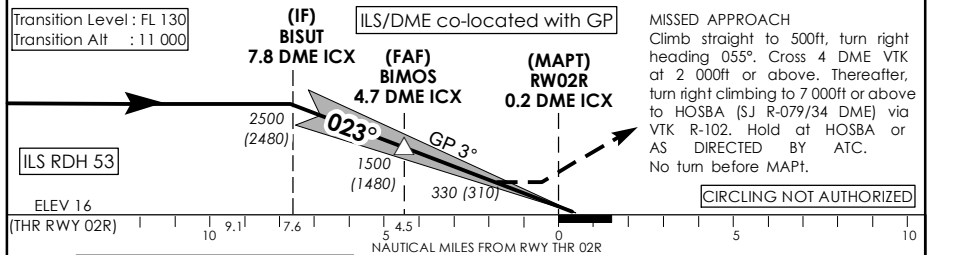
MSA 25 NM  
from TEKONG DVOR

D-ATIS AP ID WSSS 128.025  
APP 124.05  
TWR 119.3  
131.4

**SINGAPORE/ SINGAPORE CHANGI ICX ILS/DME RWY 02R**



- This procedure requires a missed approach climb gradient of 5% (304 ft/NM) until passing 2,000ft. MAX IAS 185kts during turning missed approach.
- For aircraft which can only achieve a 2.5% (152 ft/NM) climb gradient, the OCA (OCH) is 820ft (800ft) and aircraft shall climb straight to 1200ft before commencing right turn climbing to 7000ft or above to HOSBA.



TIMING NOT AUTHORIZED WHEN GP INOP				
Category of Aircraft	OCA (OCH)			
	A	B	C	D
Straight-in	CAT I ILS	220 (200)		
	CAT II ILS	120 (100)		
	GP INOP	330 (310)		
Distance	4 DME	3 DME	2 DME	
Altitude (Height)	1300 (1280)	980 (960)	660 (640)	
Speed	knots	70	120	150
FAF - MAPT 4.5nm	min : s *	3 : 52	2 : 15	1 : 48
Rate of descent/GS	ft/min	630	1080	1350
			185	1 : 28
			1665	