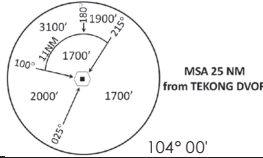


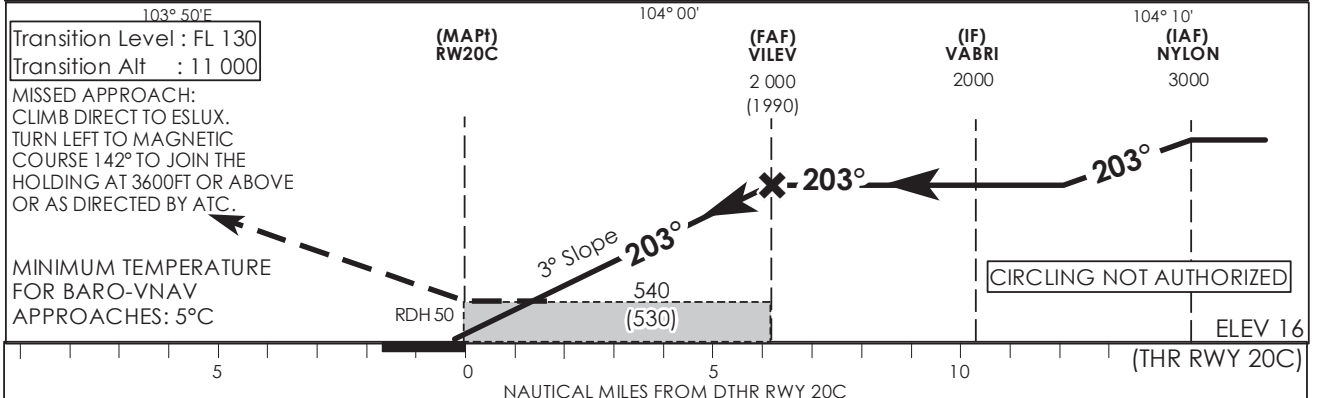
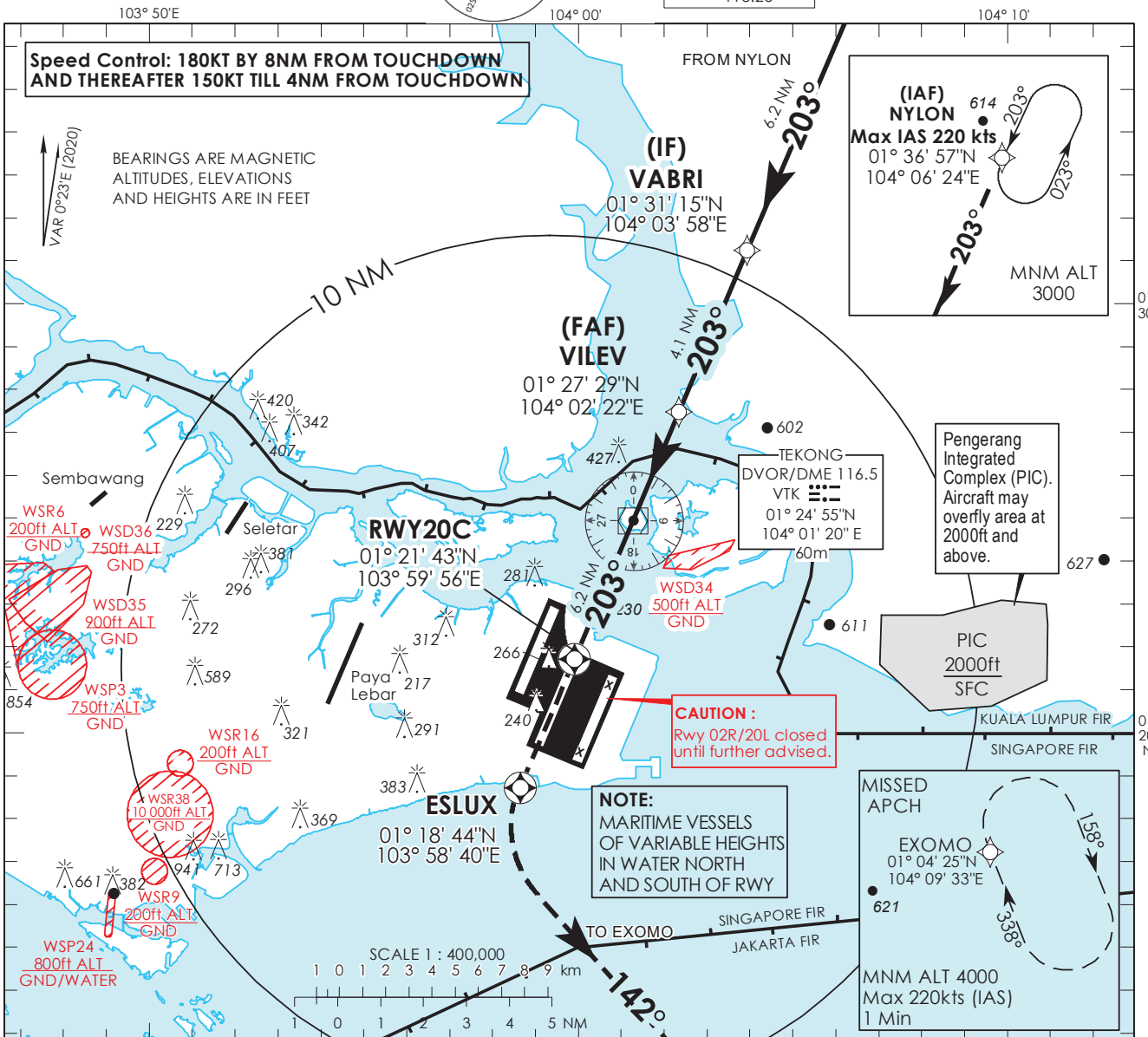
**INSTRUMENT APPROACH CHART - ICAO**

AERODROME ELEV 22ft  
HEIGHT RELATED TO  
THR RWY 20C - ELEV 16ft



D-ATIS	AP ID WSSS
APP	128.025
APP	124.05
TWR	119.3
TWR	118.6
TWR	118.25

**SINGAPORE/ SINGAPORE CHANGI RNP RWY 20C**



		OCA (OCH)					
		A	B	C	D		
Category of Aircraft							
LNAV/VNAV	2.5%	490 (480)					
LNAV	2.5%	540 (530)					
Fix		NYLON	VABRI	VILEV	RW20C	ESLUX	EXOMO
Altitude (Height)		3000 (2985)	2000 (1985)	2000 (1985)	540 (525)	540 (525)	3600 (3585)
Speed	knots	80	100	120	140	160	180
FAF - MAPt 6.2 nm	min : s	4 : 39	3 : 44	3 : 06	2 : 40	2 : 20	2 : 04
Rate of descent/GS	ft/min	425	531	637	743	849	955

**SINGAPORE CHANGI RNP-APCH RWY 20C – Approach from NYLON**

Path Terminator	Waypoint	Fly-Over	Course °M (°T)	Magnetic Variation	Distance (NM)	Turn Direction	Altitude (FT)	Speed Limit (KT)	VPA/TCH(FT)	Navigation Specification
IF	NYLON	-	-	-0.4	-	-	A030+	220	-	RNP APCH
TF	VABRI	-	203 (203.4)	-0.4	6.2	-	A020+	-	-	RNP APCH
TF	VILEV	-	203 (203.4)	-0.4	4.1	-	A020+	-	-	RNP APCH
TF	RW20C	Y	203 (203.4)	-0.4	6.2	-	-	-	-3.0° / 50	RNP APCH
DF	ESLUX	Y	-	-0.4	-	L	-	-	-	RNP APCH
TF	EXOMO	-	142 (142.4)	-0.4	-	-	A040+	220	-	RNP APCH

**Waypoint Coordinates**

Name	Latitude	Longitude
NYLON (IAF)	01° 36' 57" N	104° 06' 24" E
VABRI (IF)	01° 31' 15" N	104° 03' 58" E
VILEV (FAF)	01° 27' 29" N	104° 02' 22" E
RW20C	01° 21' 43" N	103° 59' 56" E
ESLUX	01° 18' 44" N	103° 58' 40" E
EXOMO	01° 04' 25" N	104° 09' 33" E