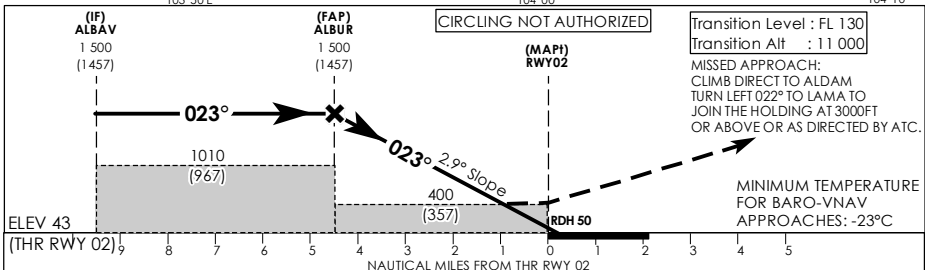
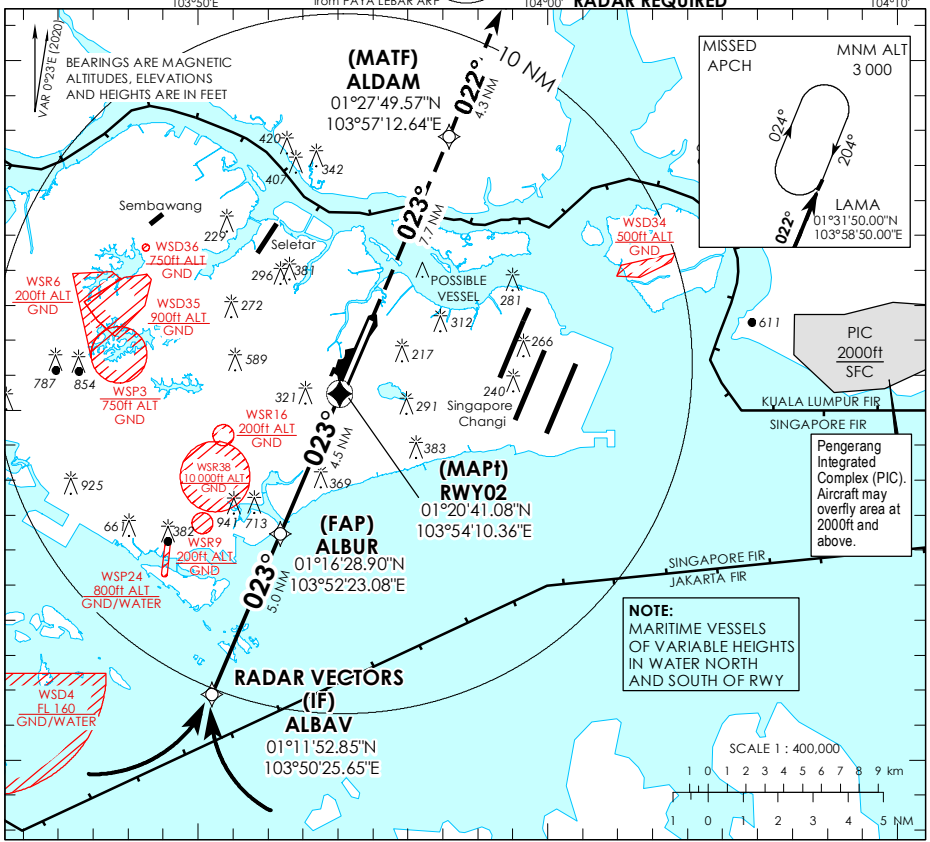


INSTRUMENT APPROACH CHART - ICAO
 AERODROME ELEV **65ft**
 HEIGHT RELATED TO THR RWY 02 - **43ft**

ATIS Paya Lebar 148.9
 Singapore APP 124.05
 Paya Lebar APP 119.9 298.0
 Seletar APP 126.025
 Paya Lebar TWR 118.05 263.1
 Ground Control 130.8 296.0

SINGAPORE/PAYA LEBAR RNP RWY 02



| Category of Aircraft | OCA (OCH) | | | | | | |
|----------------------|--------------------|--------------------|------------------|--------------------|--------------------|---------------|---------------|
| | A | B | C | D | | | |
| LNAV/VNAV | 2.5% | | 400 (357) | | | | |
| LNAV | 2.5% | | 400 (357) | | | | |
| Fix | ALBAV | ALBUR | RWY02 | ALDAM | LAMA | | |
| Altitude (Height) | 1500 (1457) | 1500 (1457) | 400 (357) | 1250 (1207) | 1910 (1867) | | |
| Speed | knots | 80 | 100 | 120 | 140 | 160 | 180 |
| FAP - MAPt 4.5 nm | min : s | 3 : 23 | 2 : 42 | 2 : 15 | 1 : 56 | 1 : 41 | 1 : 30 |
| Rate of descent/GS | ft/min | 410 | 513 | 615 | 718 | 821 | 923 |