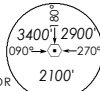


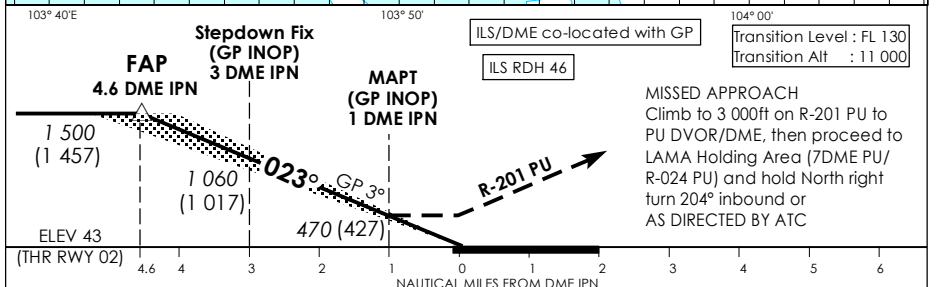
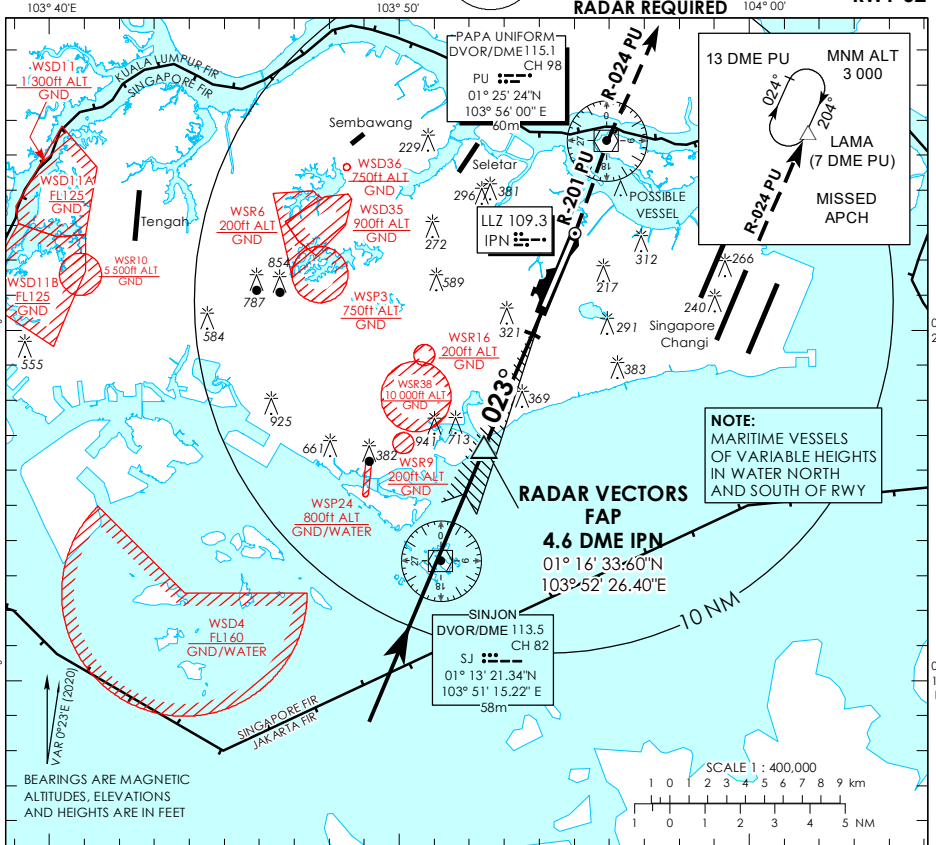
**INSTRUMENT APPROACH CHART - ICAO**

**AERODROME ELEV 65ft**  
HEIGHT RELATED TO  
**THR RWY 02 - ELEV 43ft**  
MSA 25 NM  
from PAPA UNIFORM DVOR



|                 |              |
|-----------------|--------------|
| ATIS Paya Lebar | 148.9        |
| Singapore APP   | 124.05       |
| Paya Lebar APP  | 119.9 298.0  |
| Seletar APP     | 126.025      |
| Paya Lebar TWR  | 118.05 263.1 |
| Ground Control  | 130.8 296.0  |

**SINGAPORE/PAYA LEBAR  
IPN ILS/DME  
RWY 02**



| OCA (OCH)            |             |             |           |           |           |
|----------------------|-------------|-------------|-----------|-----------|-----------|
| Category of Aircraft | A           | B           | C         | D         |           |
| Straight-in          | CAT I ILS   | 178 (135)   | 188 (145) | 198 (155) | 208 (165) |
|                      | GP INOP     | 470 (427)   |           |           |           |
| Distance             | 4 DME       | 3 DME       | 2 DME     |           |           |
| Altitude (Height)    | 1300 (1257) | 1060 (1017) | 740 (697) |           |           |
| Speed                | knots       | 70          | 120       | 150       | 185       |
| FAF - MAPT 3.6nm     | min : s     | 3 : 06      | 1 : 48    | 1 : 27    | 1 : 11    |
| Rate of descent/GS   | ft/min      | 370         | 635       | 795       | 980       |