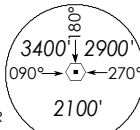


INSTRUMENT APPROACH CHART - ICAO

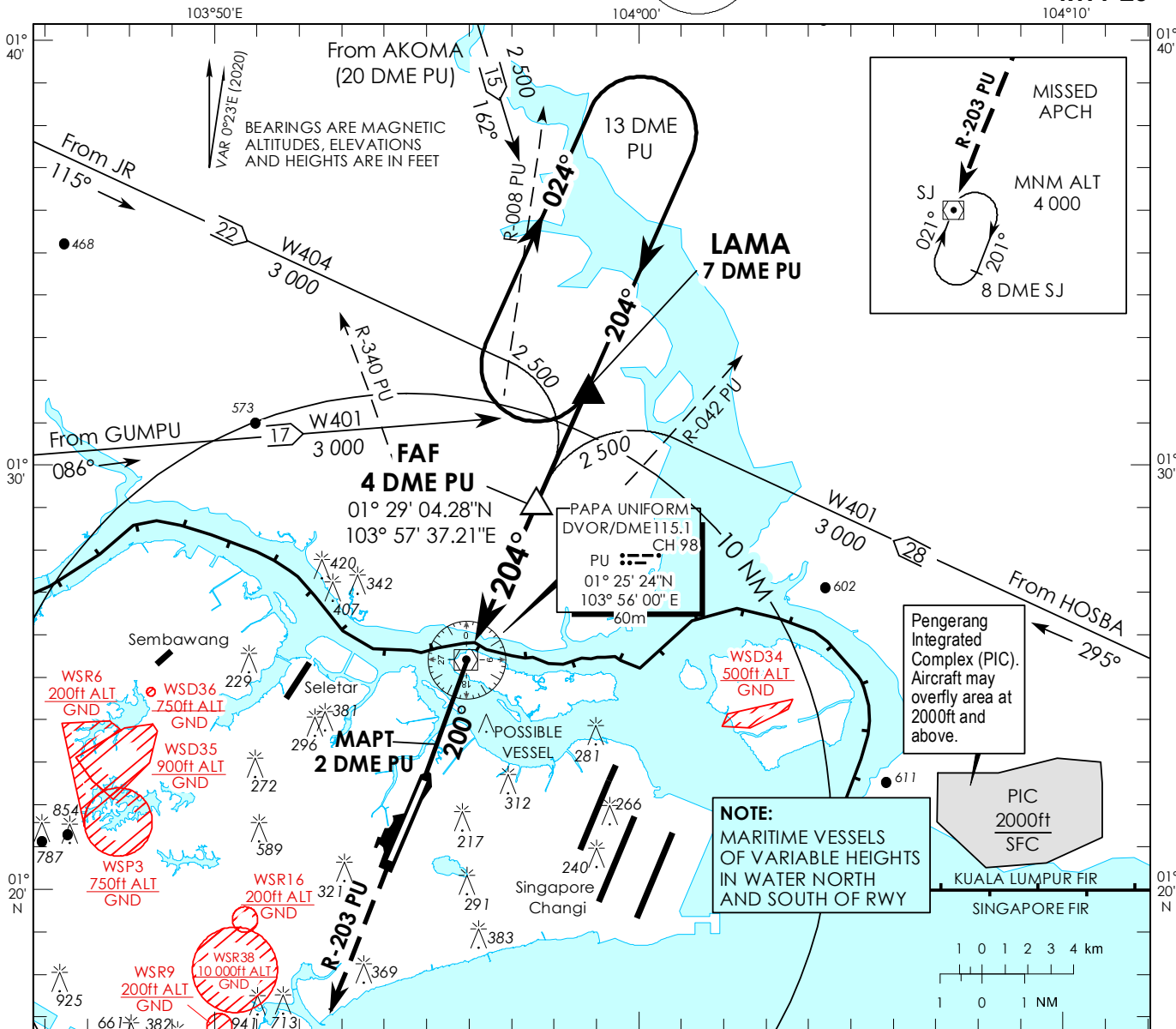
AERODROME ELEV **65ft**
HEIGHT RELATED TO
AD ELEV - **65ft**

MSA 25 NM
from PAPA UNIFORM DVOR



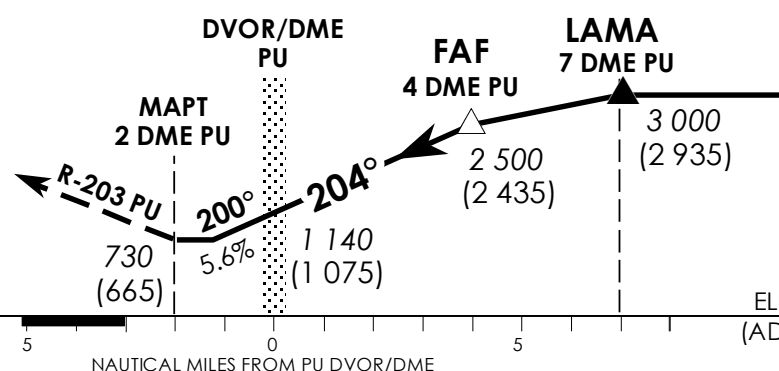
APP 124.05
119.9
126.025
TWR 118.05

**SINGAPORE/PAYA LEBAR
PU DVOR/DME
RWY 20**



Transition Level : FL 130
Transition Alt : 11 000

MISSED APPROACH
Climb to 4 000ft on R-203 PU to SJ DVOR/DME and hold South right turn 021° inbound or AS DIRECTED BY ATC



OCA (OCH)					
Category of Aircraft	A	B	C	D	
Straight-in	730 (665)				
Distance	3 DME	2 DME	1 DME	PU DVOR/DME	1 DME
Altitude (Height)	2160 (2095)	1820 (1755)	1480 (1415)	1140 (1075)	800 (735)
Speed	knots	70	120	150	185
FAF - MAPT 6nm	min : s	5 : 09	3 : 00	2 : 24	1 : 57
Rate of descent/GS	ft/min	370	635	795	980