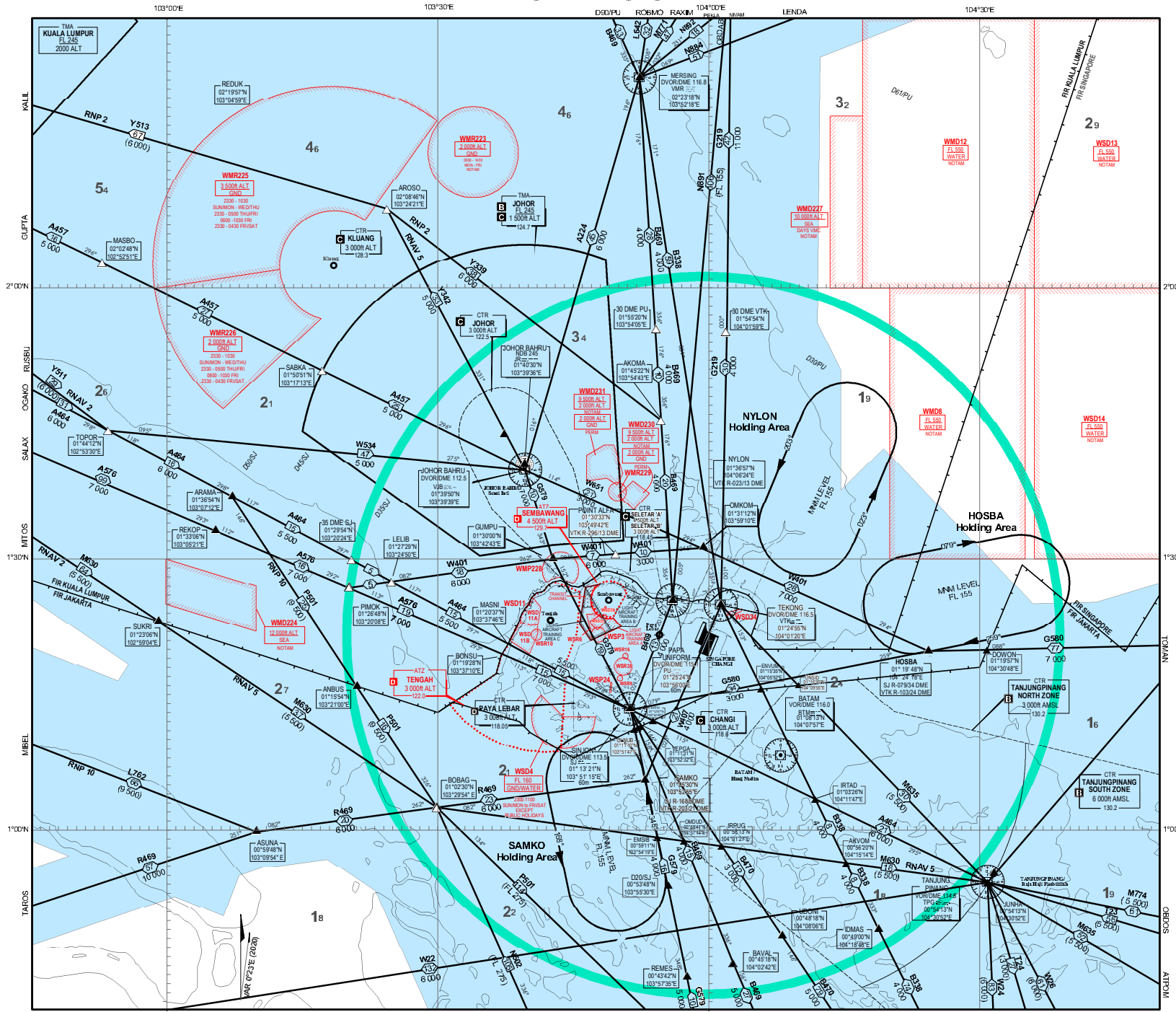


AREA CHART - ICAO

HIGH LEVEL HOLDING AREAS



LEGEND											
Terminal Control Area (TMA)	<table border="1"> <tr> <th>Name of TMA</th> <td>TMA-JOHOR</td> </tr> <tr> <th>Airspace Classification</th> <td>Class B</td> </tr> <tr> <th>Upper Limit</th> <td>FL150</td> </tr> <tr> <th>Lower Limit</th> <td>FL5000</td> </tr> <tr> <th>Radio frequency (MHz)</th> <td>124.7</td> </tr> </table>	Name of TMA	TMA-JOHOR	Airspace Classification	Class B	Upper Limit	FL150	Lower Limit	FL5000	Radio frequency (MHz)	124.7
Name of TMA	TMA-JOHOR										
Airspace Classification	Class B										
Upper Limit	FL150										
Lower Limit	FL5000										
Radio frequency (MHz)	124.7										
Control Zone (CTR)	<table border="1"> <tr> <th>Name of CTR</th> <td>CTR-CHANGI</td> </tr> <tr> <th>Airspace Classification</th> <td>Class G</td> </tr> <tr> <th>Upper Limit</th> <td>3000ft</td> </tr> <tr> <th>Radio frequency (MHz)</th> <td>118.6m</td> </tr> </table>	Name of CTR	CTR-CHANGI	Airspace Classification	Class G	Upper Limit	3000ft	Radio frequency (MHz)	118.6m		
Name of CTR	CTR-CHANGI										
Airspace Classification	Class G										
Upper Limit	3000ft										
Radio frequency (MHz)	118.6m										
Aerodrome Traffic Zone (ATZ)	<table border="1"> <tr> <th>Name of ATZ</th> <td>ATZ-TENGAH</td> </tr> <tr> <th>Airspace Classification</th> <td>Class G</td> </tr> <tr> <th>Upper Limit</th> <td>3000ft</td> </tr> <tr> <th>Radio frequency (MHz)</th> <td>122.0</td> </tr> </table>	Name of ATZ	ATZ-TENGAH	Airspace Classification	Class G	Upper Limit	3000ft	Radio frequency (MHz)	122.0		
Name of ATZ	ATZ-TENGAH										
Airspace Classification	Class G										
Upper Limit	3000ft										
Radio frequency (MHz)	122.0										
ATS Routes	<table border="1"> <tr> <th>Route designator</th> <td>B469</td> </tr> <tr> <th>Distance in nautical miles</th> <td>4.00</td> </tr> <tr> <th>Minimum flight altitude (FT) above level</th> <td>4000 (FL 160)</td> </tr> <tr> <th>Lower limit (FT) above level</th> <td>4000 (FL 160)</td> </tr> </table>	Route designator	B469	Distance in nautical miles	4.00	Minimum flight altitude (FT) above level	4000 (FL 160)	Lower limit (FT) above level	4000 (FL 160)		
Route designator	B469										
Distance in nautical miles	4.00										
Minimum flight altitude (FT) above level	4000 (FL 160)										
Lower limit (FT) above level	4000 (FL 160)										
Reporting Point	<table border="1"> <tr> <th>Compulsory</th> <td>▲</td> </tr> <tr> <th>On request</th> <td>△</td> </tr> </table>	Compulsory	▲	On request	△						
Compulsory	▲										
On request	△										
DME distance from SJ Navaid	D35/SJ										
Radio Navigation Aid	<table border="1"> <tr> <th>Name</th> <td>CHANGI</td> </tr> <tr> <th>Identifier and frequency</th> <td>CHANGI 118.1</td> </tr> <tr> <th>Geographical Coordinates</th> <td>01°13.2'N 103°51'15"E</td> </tr> <tr> <th>Elevation of DME site</th> <td>118.1</td> </tr> </table>	Name	CHANGI	Identifier and frequency	CHANGI 118.1	Geographical Coordinates	01°13.2'N 103°51'15"E	Elevation of DME site	118.1		
Name	CHANGI										
Identifier and frequency	CHANGI 118.1										
Geographical Coordinates	01°13.2'N 103°51'15"E										
Elevation of DME site	118.1										
Collocated VOR and DME Radio Navigation Aids	<table border="1"> <tr> <th>Compass rose orientation on chart</th> <td>Magnetic North</td> </tr> </table>	Compass rose orientation on chart	Magnetic North								
Compass rose orientation on chart	Magnetic North										
Restricted Airspace (P - Prohibited, R - Restricted, D - Danger)	<table border="1"> <tr> <th>Identification of area</th> <td>WSD13</td> </tr> <tr> <th>Nationality letter</th> <td>W</td> </tr> <tr> <th>Vertical limit</th> <td>NOTAM</td> </tr> <tr> <th>Activation by NOTAM</th> <td>NOTAM</td> </tr> </table>	Identification of area	WSD13	Nationality letter	W	Vertical limit	NOTAM	Activation by NOTAM	NOTAM		
Identification of area	WSD13										
Nationality letter	W										
Vertical limit	NOTAM										
Activation by NOTAM	NOTAM										
NOTE	See the site for details of designated areas										
Area Minimum Altitude (AMA)	<p>Each quadrilateral contains an area minimum altitude (AMA) which represents the lowest altitude which may be used under instrument meteorological conditions (IMC). The AMA provides a minimum clearance of 1 000 feet (300m) above all terrain and obstacles in the quadrilateral. It is represented in the USA and hundreds of feet above mean sea level.</p> <p>Example: 3 400 feet 34</p>										
NOTE	In computing the area minimum altitude, a margin of 200 feet (60m) for vegetation has been added for spot elevations.										

Speed Control Procedures	
Speed control procedures are in force unless notified otherwise by ATC or ATIS.	
All arriving turbo-propeller and turbo-jet aircraft are to fly at not faster than indicated air speed 250 knots when within 40nm from Singapore Changi Airport or when or below 10 000ft except at arriving aircraft into Singapore Changi Airport shall comply with the speed restrictions depicted on the transitions and RNAV STARs. Further speed reductions will be regulated by ATC as necessary.	
Pilot who may not be able to comply with the speed limits specified above for reasons of flight safety and/or weather should inform ATC and state the speed(s) accepted.	

AIRSPACE CLASSIFICATION IN THE SINGAPORE FIR		
Airspace	Levels	Classification
Controlled airspace	FL150 to FL450	A
Controlled airspace	Surface to FL150	B
Controlled airspace more than 100 nm seaward from the shoreline	Lower limit to FL450	A
Control Zone (CTR)	Changi CTR	C
	Paya Lebar CTR	D
	Seletar CTR	C
ATZs	Surface to upper limit	D
Uncontrolled airspace		G

* Aircraft operating in the Light Aircraft Training Areas A, B and C (please refer to page ENR 5.2-1) are required to have continuous two-way communications with the appropriate ATIS authority.

SINGAPORE	DATIS	DEF	128.6
		AFR	128.025
		DEF	120.3
		AFR	119.3
		APP	124.05
		TWR	118.6
			118.25

NOTE:
FOR DEPARTURE AND ARRIVAL ROUTES
REFER TO AD-2-WSSSS-SD-1 TO AD-2-WSSSS-SID-64 AND
AD-2-WSSSS-STAR-1 TO AD-2-WSSSS-STAR-19

