

**STANDARD ARRIVAL CHART**  
**RNAV (GNSS) -**  
**INSTRUMENT (STAR)**

ACC 134.2  
APP 124.05  
119.3  
TWR 118.6 / 118.25

TRANSITION ALTITUDE  
11 000ft

D-ATIS AP ID-WSSS  
128.025

**SINGAPORE/Singapore Changi**  
**RWY 20R/C/L**  
**KARTO TWO BRAVO ARRIVAL**  
**KARTO 2B**

ELEV. ALT IN FEET  
BEARINGS, TRACKS AND  
RADIALS ARE MAGNETIC  
VAR 0°23'E (2020)

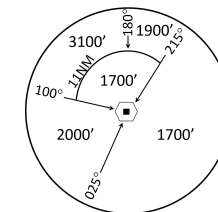
DISTANCES IN NM

**CAUTION: RWY 02R/20L CLOSED UNTIL FURTHER ADVISED**

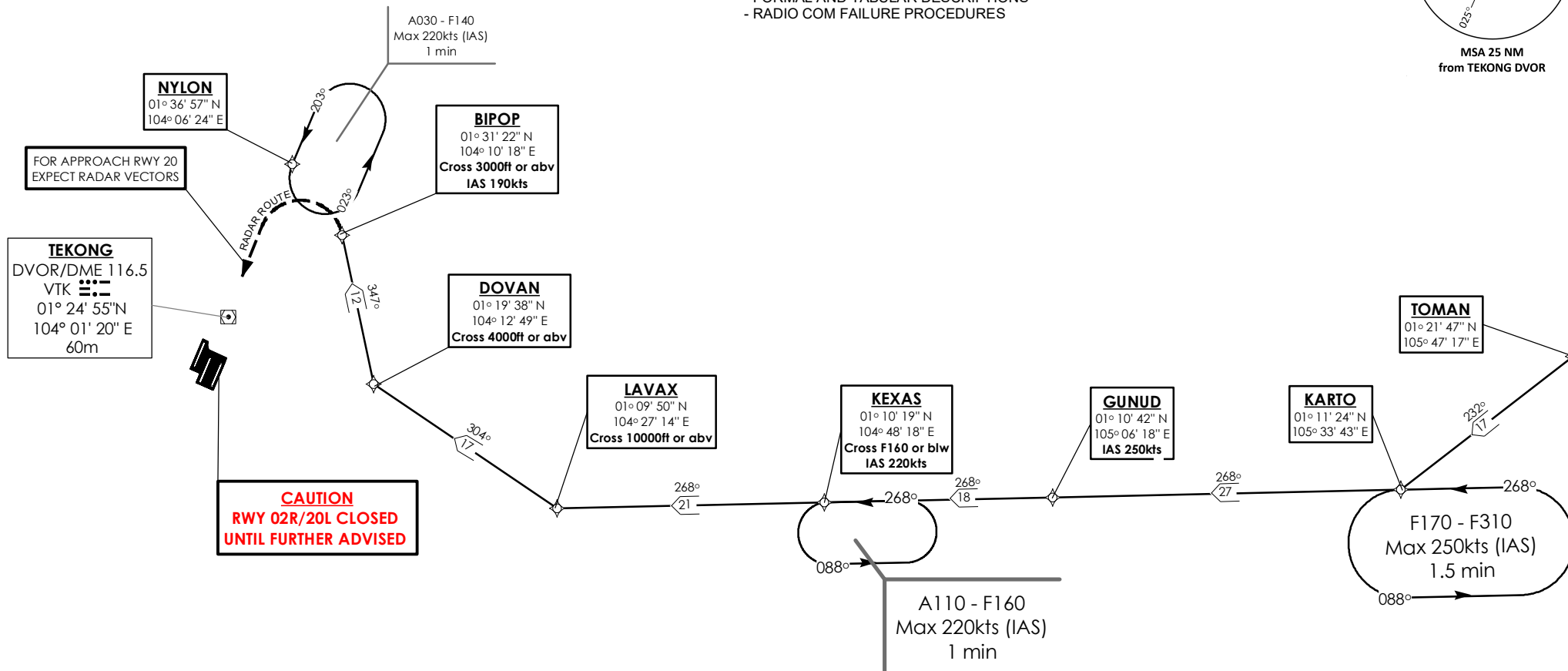
**NOTE: RADAR REQUIRED**

**NOTE: RNAV-1 NAVIGATION SPECIFICATION GNSS REQUIRED**

**NOTE: REFER TO BACK PAGE FOR**  
- FORMAL AND TABULAR DESCRIPTIONS  
- RADIO COM FAILURE PROCEDURES



MSA 25 NM  
from TEKONG DVOR



NOT TO SCALE

**CHANGES :** 1. Procedure revised due to FIR Realignment  
2. Indication of Runway 3 closure annotation and crosses "X"  
3. AIP Page Reference

21 MAR 2024

**KARTO 2B (STAR) RNAV GNSS RWY 20R/20C/20L - DESCRIPTIONS****Formal & Abbreviated Descriptions**

Formal Description	Abbreviated Description	Path Terminator	Fly-Over required
From TOMAN.	TOMAN -	IF	N
To KARTO, turn right.	KARTO [R] -	TF	N
To GUNUD, speed 250kts.	GUNUD [K250] -	TF	N
To KEXAS at or below FL160, speed 220kts.	KEXAS [FL160-; K220] -	TF	N
To LAVAX at or above 10000ft, turn right.	LAVAX [A100+; R] -	TF	N
To DOVAN at or above 4000ft, turn right.	DOVAN [A040+; R] -	TF	N
To BIPOP at or above 3000ft, speed 190kts.	BIPOP [A030+; K190]	TF	N

**Tabular Descriptions**

Path Term	Waypoint Name	Fly-Over	Course °M(°T)	Distance (NM)	Turn Direction	Altitude	Speed Limit	Navigation Spec
IF	TOMAN	-	-	-	-	-	-	RNAV1
TF	KARTO	-	232(232.4)	17.0	R	-	-	RNAV1
TF	GUNUD	-	268(268.4)	27.0	-	-	K250	RNAV1
TF	KEXAS	-	268(268.4)	18.0	-	FL160-	K220	RNAV1
TF	LAVAX	-	268(268.4)	21.0	R	A100+	-	RNAV1
TF	DOVAN	-	304(304.4)	17.0	R	A040+	-	RNAV1
TF	BIPOP	-	347(347.4)	12.0	-	A030+	K190	RNAV1

**Radio Communications Failure Procedure**

1	<b>SET TRANSPONDER TO MODE A/C CODE 7600</b>
2	<p><b>When cleared via KARTO 2B by Singapore ATC</b></p> <p>(a) Maintain last assigned flight level or altitude and proceed on KARTO 2B to BIPOP, then direct to NYLON</p> <p>(b) From NYLON commence descent and carry out appropriate landing procedure for RWY 20 as close as possible to EAT or ETA</p> <p>(c) If unable to effect a landing, refer to Singapore AIP for missed approach procedure</p>
3	<p><b>No clearance or instruction received from Singapore ATC</b></p> <p>- Refer to Singapore AIP for radio communications failure procedure</p>