

**STANDARD ARRIVAL CHART
RNAV (GNSS) -
INSTRUMENT (STAR)**

ACC 133.8
APP 124.05
119.3
TWR 118.6 / 118.25

TRANSITION ALTITUDE
11 000ft

D-ATIS AP ID-WSSS
128.025

**SINGAPORE/Singapore Changi
RWY 02L/C/R
ELALO ONE ALPHA ARRIVAL
ELALO 1A**

ELEV, ALT IN FEET
BEARINGS, TRACKS AND
RADIALS ARE MAGNETIC
VAR 0°23'E (2020)

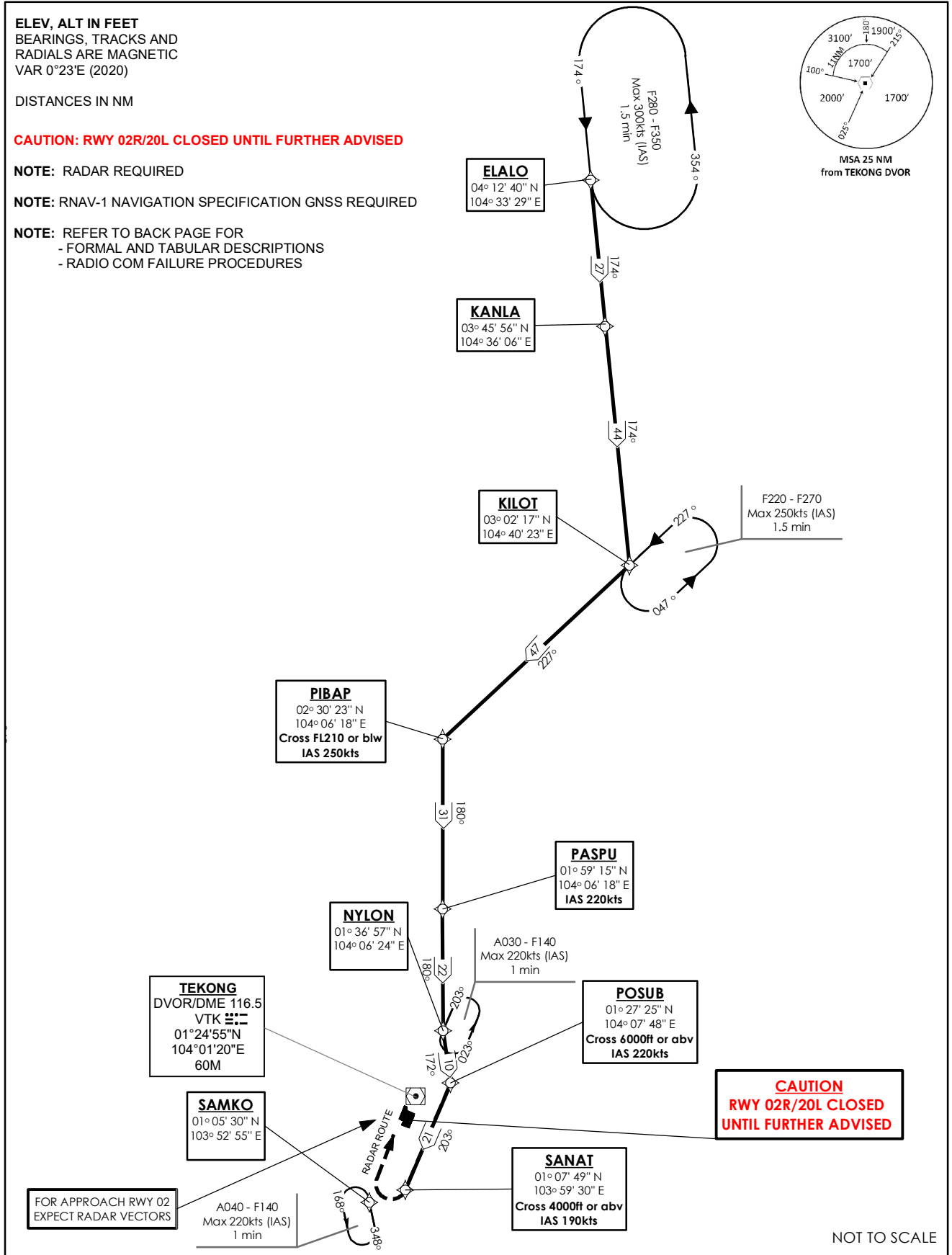
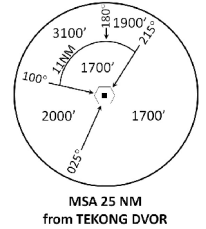
DISTANCES IN NM

CAUTION: RWY 02R/20L CLOSED UNTIL FURTHER ADVISED

NOTE: RADAR REQUIRED

NOTE: RNAV-1 NAVIGATION SPECIFICATION GNSS REQUIRED

NOTE: REFER TO BACK PAGE FOR
- FORMAL AND TABULAR DESCRIPTIONS
- RADIO COM FAILURE PROCEDURES



21 MAR 2024

ELALO 1A (STAR) RNAV GNSS RWY 02L/02C/02R - DESCRIPTIONS**Formal & Abbreviated Descriptions**

Formal Description	Abbreviated Description	Path Terminator	Fly-Over required
From ELALO.	ELALO -	IF	N
To KANLA.	KANLA -	TF	N
To KILOT, turn right.	KILOT [R] -	TF	N
To PIBAP at or below FL210, speed 250kts, turn left.	PIBAP [FL210-; K250; L] -	TF	N
To PASPU, speed 220kts.	PASPU [K220] -	TF	N
To NYLON, turn left.	NYLON [L] -	TF	N
To POSUB at or above 6000ft, speed 220kts, turn right.	POSUB [A060+; K220; R] -	TF	N
To SANAT at or above 4000ft, speed 190kts.	SANAT [A040+; K190]	TF	N

Tabular Descriptions

Path Term	Waypoint Name	Fly-Over	Course °M(°T)	Distance (NM)	Turn Direction	Altitude	Speed Limit	Navigation Spec
IF	ELALO	-	-	-	-	-	-	RNAV1
TF	KANLA	-	174(174.4)	27.0	-	-	-	RNAV1
TF	KILOT	-	174(174.4)	44.0	R	-	-	RNAV1
TF	PIBAP	-	227(227.4)	47.0	L	FL210-	K250	RNAV1
TF	PASPU	-	180(180.4)	31.0	-	-	K220	RNAV1
TF	NYLON	-	180(180.4)	22.0	L	-	-	RNAV1
TF	POSUB	-	172(172.4)	10.0	R	A060+	K220	RNAV1
TF	SANAT	-	203(203.4)	21.0	-	A040+	K190	RNAV1

Radio Communications Failure Procedure

1	SET TRANSPONDER TO MODE A/C CODE 7600
2	<p>When cleared via ELALO 1A by Singapore ATC</p> <p>(a) Maintain last assigned flight level or altitude and proceed on ELALO 1A to SANAT, then direct to SAMKO</p> <p>(b) From SAMKO commence descent and carry out appropriate landing procedure for RWY 02 as close as possible to EAT or ETA</p> <p>(c) If unable to effect a landing, refer to Singapore AIP for missed approach procedure</p>
3	<p>No clearance or instruction received from Singapore ATC</p> <p>- Refer to Singapore AIP for radio communications failure procedure</p>