

**STANDARD ARRIVAL CHART
RNAV (GNSS) -
INSTRUMENT (STAR)**

ACC 133.25
APP 124.6
119.3
TWR 118.6 / 118.25

TRANSITION ALTITUDE
11 000ft

D-ATIS AP ID-WSSS
ARR 128.025

**SINGAPORE/Singapore Changi
RWY 20R/C/L
ASUNA TWO BRAVO ARRIVAL
ASUNA 2B**

ELEV, ALT IN FEET
BEARINGS, TRACKS AND
RADIALS ARE MAGNETIC
VAR 0°23'E (2020)

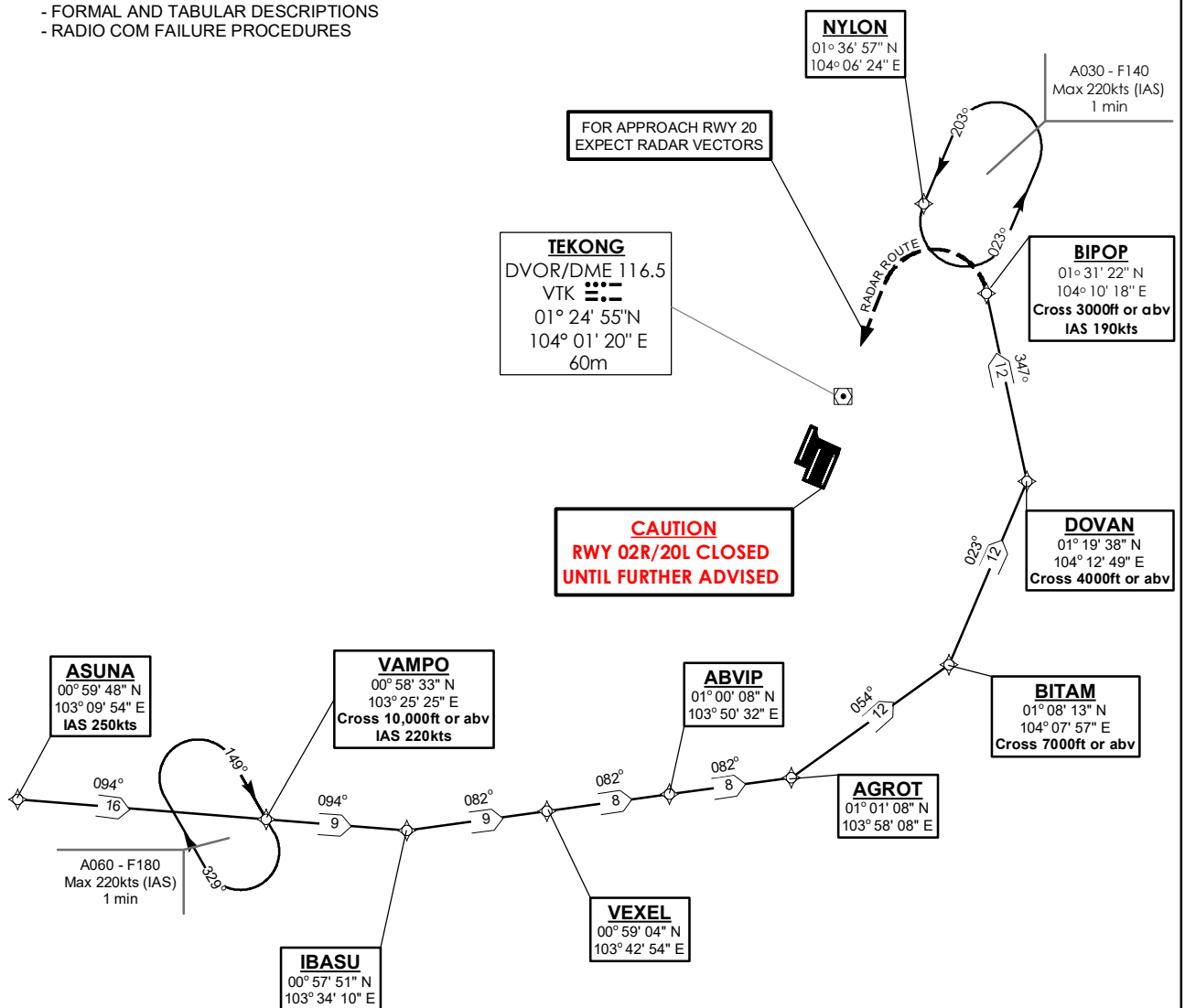
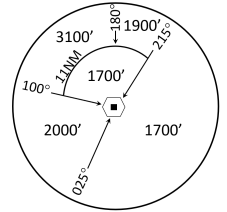
DISTANCES IN NM

CAUTION: RWY 02R/20L CLOSED UNTIL FURTHER ADVISED

NOTE: RADAR REQUIRED

NOTE: RNAV-1 NAVIGATION SPECIFICATION GNSS REQUIRED

NOTE: REFER TO BACK PAGE FOR
- FORMAL AND TABULAR DESCRIPTIONS
- RADIO COM FAILURE PROCEDURES



NOT TO SCALE

21 MAR 2024

ASUNA 2B (STAR) RNAV GNSS RWY 20R/20C/20L - DESCRIPTIONS**Formal & Abbreviated Descriptions**

Formal Description	Abbreviated Description	Path Terminator	Fly-Over required
From ASUNA, speed 250kts.	ASUNA [K250] -	IF	N
To VAMPO at or above 10000ft, speed 220kts.	VAMPO [A100+; K220] -	TF	N
To IBASU, turn left.	IBASU [L] -	TF	N
To VEXEL.	VEXEL -	TF	N
To ABVIP.	ABVIP -	TF	N
To AGROT, turn left.	AGROT [L] -	TF	N
To BITAM at or above 7000ft, turn left.	BITAM [A070+; L] -	TF	N
To DOVAN at or above 4000ft, turn left.	DOVAN [A040+; L] -	TF	N
To BIPOP at or above 3000ft, speed 190kts.	BIPOP [A030+; K190]	TF	N

Tabular Descriptions

Path Term	Waypoint Name	Fly-Over	Course °M(°T)	Distance (NM)	Turn Direction	Altitude	Speed Limit	Navigation Spec
IF	ASUNA	-	-	-	-	-	K250	RNAV1
TF	VAMPO	-	094(094.4)	16.0	-	A100+	K220	RNAV1
TF	IBASU	-	094(094.4)	9.0	L	-	-	RNAV1
TF	VEXEL	-	082(082.4)	9.0	-	-	-	RNAV1
TF	ABVIP	-	082(082.4)	8.0	-	-	-	RNAV1
TF	AGROT	-	082(082.4)	8.0	L	-	-	RNAV1
TF	BITAM	-	054(054.4)	12.0	L	A070+	-	RNAV1
TF	DOVAN	-	023(023.4)	12.0	L	A040+	-	RNAV1
TF	BIPOP	-	347(347.4)	12.0	-	A030+	K190	RNAV1

Radio Communications Failure Procedure

1	SET TRANSPONDER TO MODE A/C CODE 7600
2	<p>When cleared via ASUNA 2B by Singapore ATC</p> <p>(a) Maintain last assigned flight level or altitude and proceed on ASUNA 2B to BIPOP, then direct to NYLON</p> <p>(b) From NYLON commence descent and carry out appropriate landing procedure for RWY 20 as close as possible to EAT or ETA</p> <p>(c) If unable to effect a landing, refer to Singapore AIP for missed approach procedure</p>
3	<p>No clearance or instruction received from Singapore ATC</p> <p>- Refer to Singapore AIP for radio communications failure procedure</p>