

**STANDARD ARRIVAL CHART**  
**RNAV (GNSS) -**  
**INSTRUMENT (STAR)**

ACC 133.25  
APP 124.6  
119.3  
TWR 118.6 / 118.25

TRANSITION ALTITUDE  
11 000ft

D-ATIS AP ID-WSSS  
ARR 128.025

**SINGAPORE/Singapore Changi**  
**RWY 02L/C/R**  
**ASUNA TWO ALPHA ARRIVAL**  
**ASUNA 2A**

**ELEV, ALT IN FEET**  
BEARINGS, TRACKS AND  
RADIALS ARE MAGNETIC  
VAR 0°23'E (2020)

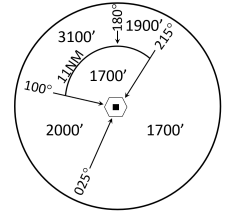
DISTANCES IN NM

**CAUTION: RWY 02R/20L CLOSED UNTIL FURTHER ADVISED**

**NOTE: RADAR REQUIRED**

**NOTE: RNAV-1 NAVIGATION SPECIFICATION GNSS REQUIRED**

**NOTE: REFER TO BACK PAGE FOR**  
- FORMAL AND TABULAR DESCRIPTIONS  
- RADIO COM FAILURE PROCEDURES

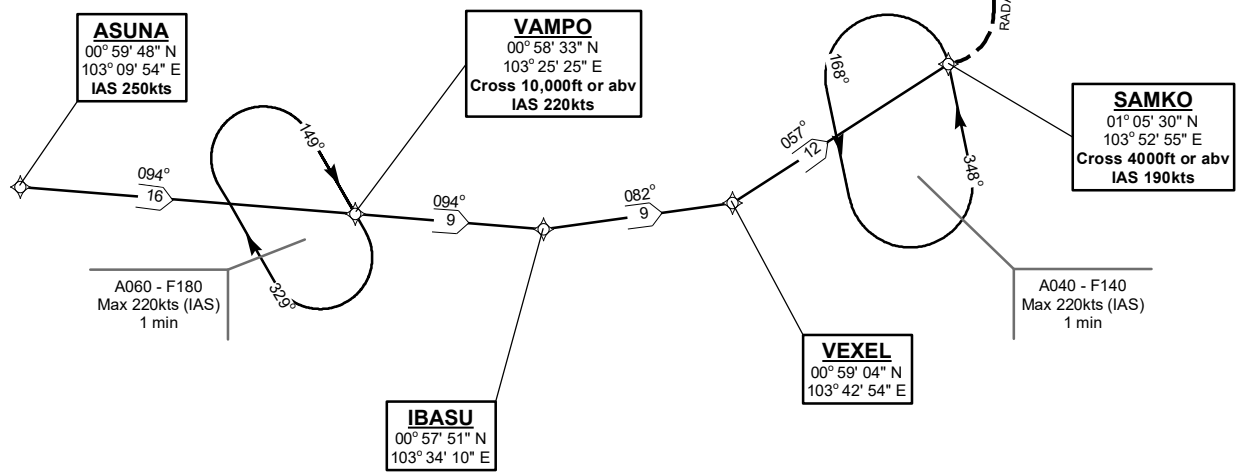


MSA 25 NM  
from TEKONG DVOR

**CAUTION**  
**RWY 02R/20L CLOSED**  
**UNTIL FURTHER ADVISED**

**TEKONG**  
DVOR/DME 116.5  
VTK   
01° 24' 55" N  
104° 01' 20" E  
60m

FOR APPROACH RWY 02  
EXPECT RADAR VECTORS



NOT TO SCALE

21 MAR 2024

**ASUNA 2A (STAR) RNAV GNSS RWY 02L/02C/02R - DESCRIPTIONS****Formal & Abbreviated Descriptions**

Formal Description	Abbreviated Description	Path Terminator	Fly-Over required
From ASUNA, speed 250kts.	ASUNA [K250] -	IF	N
To VAMPO at or above 10000ft, speed 220kts.	VAMPO [A100+; K220] -	TF	N
To IBASU, turn left.	IBASU [L] -	TF	N
To VEXEL, turn left.	VEXEL [L] -	TF	N
To SAMKO at or above 4000ft, speed 190kts.	SAMKO [A040+; K190]	TF	N

**Tabular Descriptions**

Path Term	Waypoint Name	Fly-Over	Course °M(°T)	Distance (NM)	Turn Direction	Altitude	Speed Limit	Navigation Spec
IF	ASUNA	-	-	-	-	-	K250	RNAV1
TF	VAMPO	-	094(094.4)	16.0	-	A100+	K220	RNAV1
TF	IBASU	-	094(094.4)	9.0	L	-	-	RNAV1
TF	VEXEL	-	082(082.4)	9.0	L	-	-	RNAV1
TF	SAMKO	-	057(057.4)	12.0	-	A040+	K190	RNAV1

**Radio Communications Failure Procedure**

1	<b>SET TRANSPONDER TO MODE A/C CODE 7600</b>
2	<p><b>When cleared via ASUNA 2A by Singapore ATC</b></p> <p>(a) Maintain last assigned flight level or altitude and proceed on ASUNA 2A to SAMKO</p> <p>(b) From SAMKO commence descent and carry out appropriate landing procedure for RWY 02 as close as possible to EAT or ETA</p> <p>(c) If unable to effect a landing, refer to Singapore AIP for missed approach procedure</p>
3	<p><b>No clearance or instruction received from Singapore ATC</b></p> <p>- Refer to Singapore AIP for radio communications failure procedure</p>