

**STANDARD ARRIVAL CHART  
RNAV (GNSS) -  
INSTRUMENT (STAR)**

ACC 133.25  
APP 124.6  
119.3  
TWR 118.6 / 118.25

TRANSITION ALTITUDE  
11 000ft

D-ATIS AP ID-WSSS  
128.025

**SINGAPORE/Singapore Changi  
RWY 20R/C/L  
ARAMA ONE BRAVO ARRIVAL  
ARAMA 1B**

ELEV, ALT IN FEET  
BEARINGS, TRACKS AND  
RADIALS ARE MAGNETIC  
VAR 0°23'E (2020)

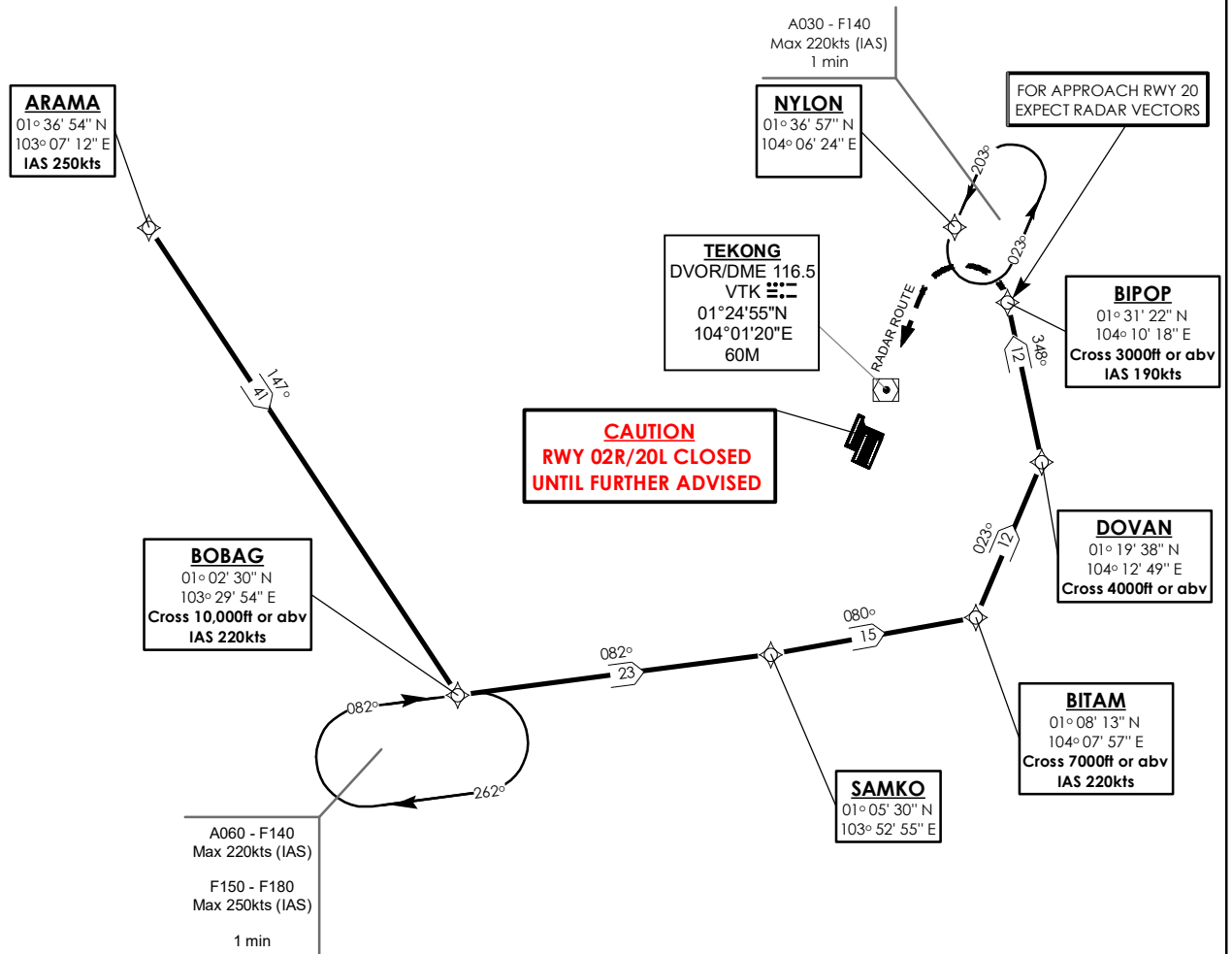
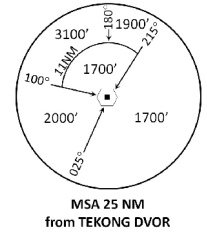
DISTANCES IN NM

**CAUTION: RWY 02R/20L CLOSED UNTIL FURTHER ADVISED**

**NOTE: RADAR REQUIRED**

**NOTE: RNAV-1 NAVIGATION SPECIFICATION GNSS REQUIRED**

**NOTE: REFER TO BACK PAGE FOR**  
- FORMAL AND TABULAR DESCRIPTIONS  
- RADIO COM FAILURE PROCEDURES



NOT TO SCALE

## ARAMA 1B (STAR) RNAV GNSS RWY 20R/20C/20L - DESCRIPTIONS

### Formal & Abbreviated Descriptions

Formal Description	Abbreviated Description	Path Terminator	Fly-Over required
From ARAMA, speed 250kts.	ARAMA [K250] -	IF	N
To BOBAG at or above 10000ft, speed 220kts, turn left.	BOBAG [A100+; K220; L] -	TF	N
To SAMKO, turn left.	SAMKO [L] -	TF	N
To BITAM at or above 7000ft, speed 220kts, turn left.	BITAM [A070+; K220; L] -	TF	N
To DOVAN at or above 4000ft, turn left.	DOVAN [A040+; L] -	TF	N
To BIPOP at or above 3000ft, speed 190kts.	BIPOP [A030+; K190]	TF	N

### Tabular Descriptions

Path Term	Waypoint Name	Fly-Over	Course °M(°T)	Distance (NM)	Turn Direction	Altitude	Speed Limit	Navigation Spec
IF	ARAMA	-	-	-	-	-	K250	RNAV1
TF	BOBAG	-	147(147.4)	41.0	L	A100+	K220	RNAV1
TF	SAMKO	-	082(082.4)	23.0	L	-	-	RNAV1
TF	BITAM	-	080(080.4)	15.0	L	A070+	K220	RNAV1
TF	DOVAN	-	023(023.4)	12.0	L	A040+	-	RNAV1
TF	BIPOP	-	348(348.4)	12.0	-	A030+	K190	RNAV1

### Radio Communications Failure Procedure

<b>1</b>	<b>SET TRANSPONDER TO MODE A/C CODE 7600</b>
<b>2</b>	<p><b>When cleared via ARAMA 1B by Singapore ATC</b></p> <p>(a) Maintain last assigned flight level or altitude and proceed on ARAMA 1B to BIPOP, then direct to NYLON</p> <p>(b) From NYLON commence descent and carry out appropriate landing procedure for RWY 20 as close as possible to EAT or ETA</p> <p>(c) If unable to effect a landing, refer to Singapore AIP for missed approach procedure</p>
<b>3</b>	<p><b>No clearance or instruction received from Singapore ATC</b></p> <p>- Refer to Singapore AIP for radio communications failure procedure</p>