

**STANDARD ARRIVAL CHART  
RNAV (GNSS) -  
INSTRUMENT (STAR)**

ACC 133.25  
APP 124.05  
119.3  
TWR 118.6 / 118.25

TRANSITION ALTITUDE  
11 000ft

D-ATIS AP ID-WSSS  
ARR 128.025

**SINGAPORE/Singapore Changi  
RWY 02L/C/R  
ARAMA ONE ALPHA ARRIVAL  
ARAMA 1A**

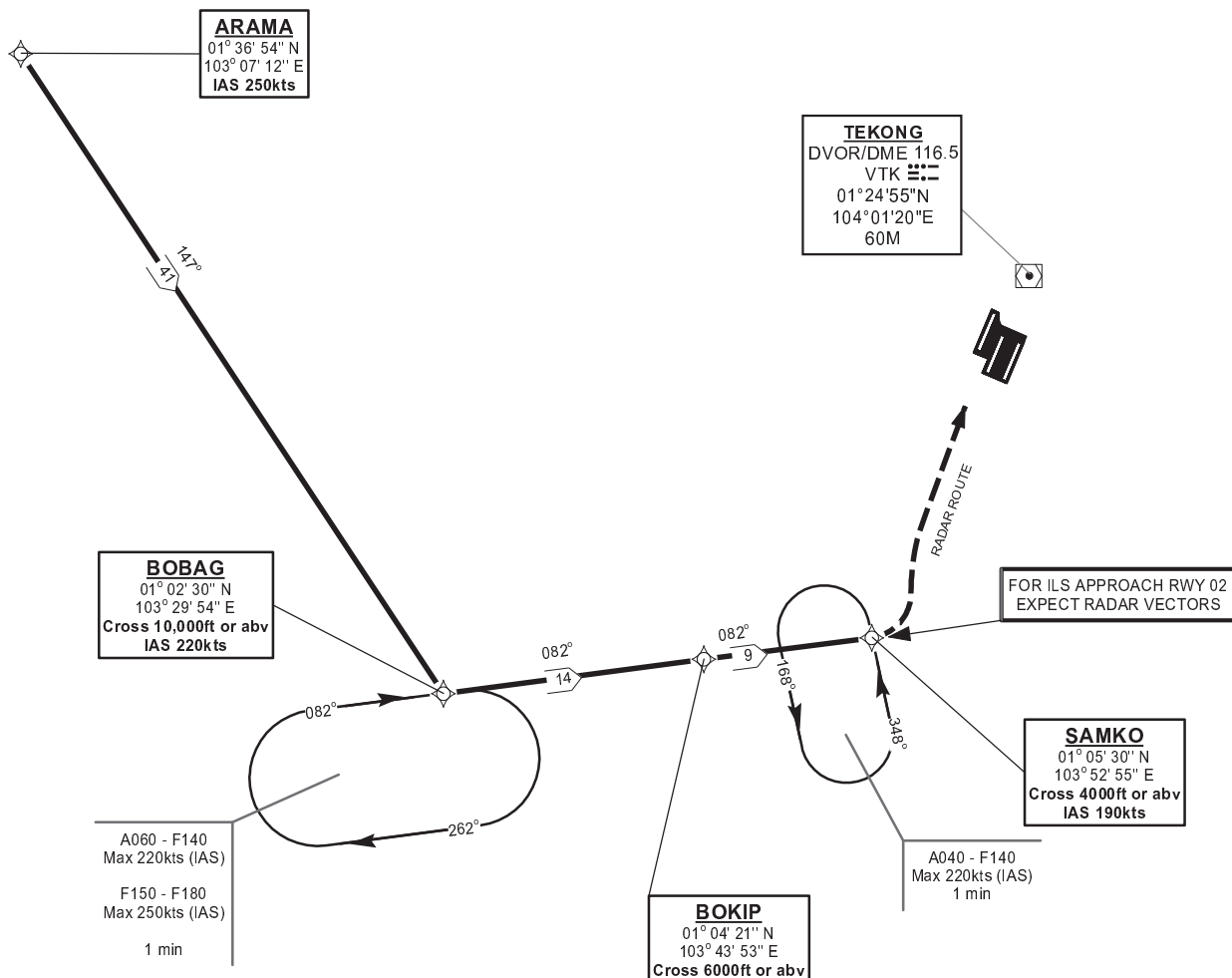
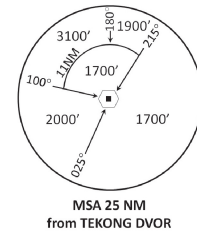
ELEV, ALT IN FEET  
BEARINGS, TRACKS AND  
RADIALS ARE MAGNETIC  
VAR 0°23'E (2020)

DISTANCES IN NM

NOTE: RADAR REQUIRED

NOTE: RNAV-1 NAVIGATION SPECIFICATION GNSS REQUIRED

NOTE: REFER TO BACK PAGE FOR  
- FORMAL AND TABULAR DESCRIPTIONS  
- RADIO COM FAILURE PROCEDURES



NOT TO SCALE

**ARAMA 1A (STAR) RNAV GNSS RWY 02L/02C/02R - DESCRIPTIONS**

**Formal & Abbreviated Descriptions**

| Formal Description   | Abbreviated Description  | Path Terminator      | Fly-Over required |
|--|--|----------------------|-------------------|
| From ARAMA, speed 250kts. To BOBAG at or above 10000ft, speed 220kts, turn left. To BOKIP at or above 6000ft. To SAMKO at or above 4000ft, speed 190kts. | ARAMA [K250] -<br>BOBAG [A100+; K220; L] -<br>BOKIP [A060+] -<br>SAMKO [A040+; K190] | IF<br>TF<br>TF<br>TF | N<br>N<br>N<br>N  |

**Tabular Descriptions**

| Path Term | Waypoint Name | Fly-Over | Course °M(°T) | Magnetic Variation | Turn Direction | Altitude | Speed Limit | Navigation Spec |
|-----------|---------------|----------|---------------|--------------------|----------------|----------|-------------|-----------------|
| IF        | ARAMA         | -        | -             | -                  | -              | -        | K250        | RNAV1           |
| TF        | BOBAG         | -        | 147(147.4)    | -0.4               | L              | A100+    | K220        | RNAV1           |
| TF        | BOKIP         | -        | 082(082.4)    | -0.4               | -              | A060+    | -           | RNAV1           |
| TF        | SAMKO         | -        | 082(082.4)    | -0.4               | -              | A040+    | K190        | RNAV1           |

**RADIO COMMUNICATIONS FAILURE PROCEDURE**

|   |  |
|---|--|
| 1 | <b>SET TRANSPONDER TO MODE A/C CODE 7600</b>   |
| 2 | <p><b>When cleared via ARAMA 1A by Singapore ATC</b></p> <p>(a) Maintain last assigned flight level or altitude and proceed on ARAMA 1A to SAMKO</p> <p>(b) From SAMKO commence descent and carry out appropriate landing procedure for RWY 02 as close as possible to EAT or ETA</p> <p>(c) If unable to effect a landing, refer to Singapore AIP for missed approach procedure</p> |
| 3 | <p><b>No clearance or instruction received from Singapore ATC</b></p> <p>- Refer to Singapore AIP for radio communications failure procedure</p>   |