

STANDARD ARRIVAL CHART
RNAV (GNSS) -
INSTRUMENT (STAR)

ACC 134.2
APP 124.05
119.3
TWR 118.6 / 118.25

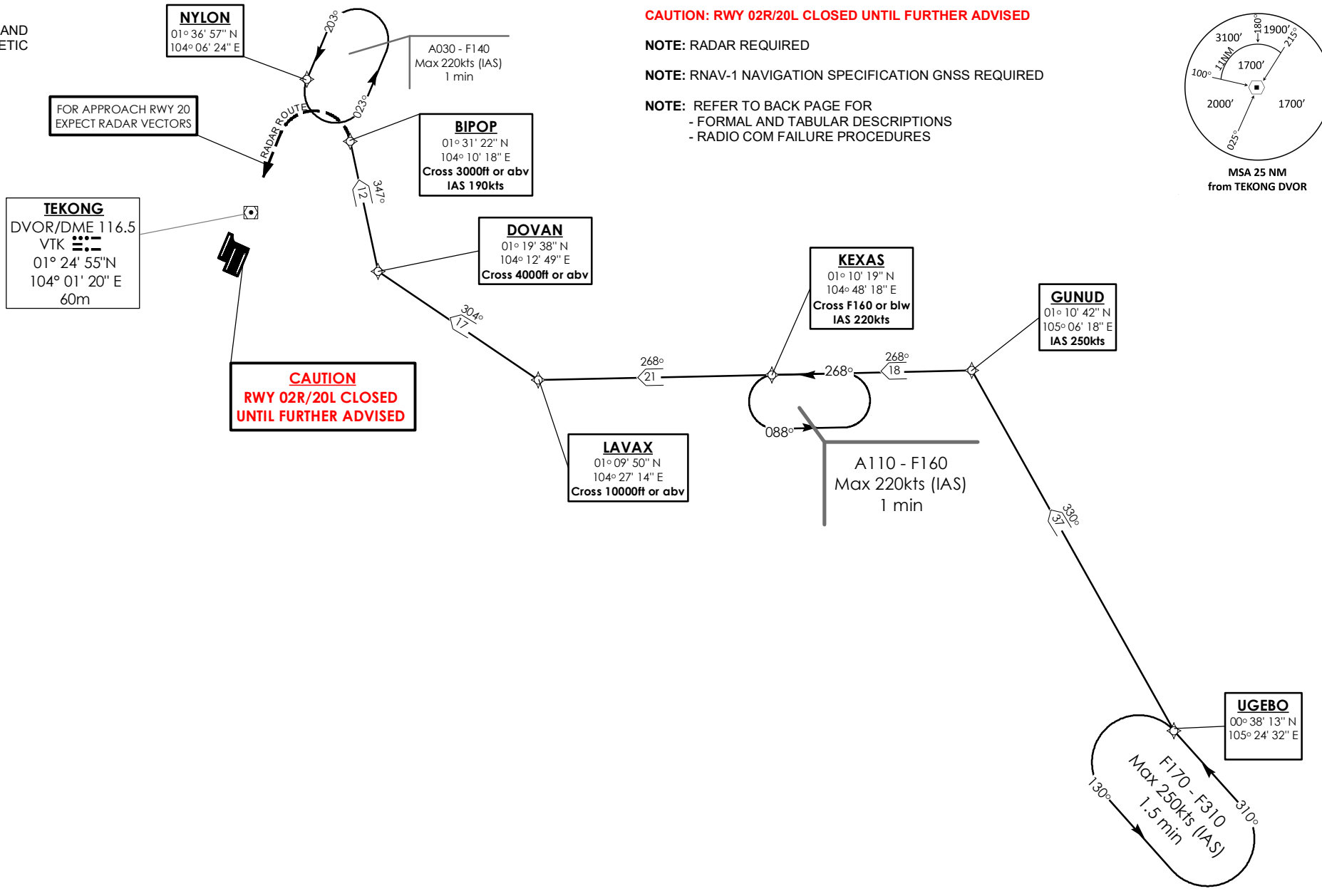
TRANSITION ALTITUDE
11 000ft

D-ATIS AP ID-WSSS
128.025

SINGAPORE/Singapore Changi
RWY 20R/C/L
UGEBO ONE BRAVO ARRIVAL
UGEBO 1B

ELEV. ALT IN FEET
BEARINGS, TRACKS AND
RADIALS ARE MAGNETIC
VAR 0°23'E (2020)

DISTANCES IN NM



NOT TO SCALE

21 MAR 2024

UGEBO 1B (STAR) RNAV GNSS RWY 20R/20C/20L - DESCRIPTIONS**Formal & Abbreviated Descriptions**

Formal Description	Abbreviated Description	Path Terminator	Fly-Over required
From UGEB0.	UGEBO -	IF	N
To GUNUD, speed 250kts, turn left.	GUNUD [K250; L] -	TF	N
To KEXAS at or below FL160, speed 220kts.	KEXAS [FL160-; K220] -	TF	N
To LAVAX at or above 10000ft, turn right.	LAVAX [A100+; R] -	TF	N
To DOVAN at or above 4000ft, turn right.	DOVAN [A040+; R] -	TF	N
To BIPOP at or above 3000ft, speed 190kts.	BIPOP [A030+; K190]	TF	N

Tabular Descriptions

Path Term	Waypoint Name	Fly-Over	Course °M(°T)	Distance (NM)	Turn Direction	Altitude	Speed Limit	Navigation Spec
IF	UGEBO	-	-	-	-	-	-	RNAV1
TF	GUNUD	-	330(330.4)	37.0	L	-	K250	RNAV1
TF	KEXAS	-	268(268.4)	18.0	-	FL160-	K220	RNAV1
TF	LAVAX	-	268(268.4)	21.0	R	A100+	-	RNAV1
TF	DOVAN	-	304(304.4)	17.0	R	A040+	-	RNAV1
TF	BIPOP	-	347(347.4)	12.0	-	A030+	K190	RNAV1

Radio Communications Failure Procedure

1	SET TRANSPONDER TO MODE A/C CODE 7600
2	<p>When cleared via UGEB0 1B by Singapore ATC</p> <p>(a) Maintain last assigned flight level or altitude and proceed on UGEB0 1B to BIPOP, then direct to NYLON</p> <p>(b) From NYLON commence descent and carry out appropriate landing procedure for RWY 20 as close as possible to EAT or ETA</p> <p>(c) If unable to effect a landing, refer to Singapore AIP for missed approach procedure</p>
3	<p>No clearance or instruction received from Singapore ATC</p> <p>- Refer to Singapore AIP for radio communications failure procedure</p>