

**STANDARD ARRIVAL CHART**  
**RNAV (GNSS) -**  
**INSTRUMENT (STAR)**

ACC 134.4  
APP 124.6  
119.3  
TWR 118.6 / 118.25

TRANSITION ALTITUDE  
11 000ft

D-ATIS AP ID-WSSS  
128.025

**SINGAPORE/Singapore Changi**  
**RWY 02L/C/R**  
**REPOV TWO ALPHA ARRIVAL**  
**REPOV 2A**

ELEV, ALT IN FEET  
BEARINGS, TRACKS AND  
RADIALS ARE MAGNETIC  
VAR 0°23'E (2020)

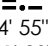
DISTANCES IN NM

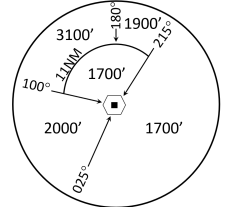
**CAUTION: RWY 02R/20L CLOSED UNTIL FURTHER ADVISED**

**NOTE: RADAR REQUIRED**

**NOTE: RNAV-1 NAVIGATION SPECIFICATION GNSS REQUIRED**

**NOTE: REFER TO BACK PAGE FOR**  
- FORMAL AND TABULAR DESCRIPTIONS  
- RADIO COM FAILURE PROCEDURES

**TEKONG**  
DVOR/DME 116.5  
VTK   
01° 24' 55" N  
104° 01' 20" E  
60m



MSA 25 NM  
from TEKONG DVOR

**CAUTION**  
**RWY 02R/20L CLOSED**  
**UNTIL FURTHER ADVISED**

FOR APPROACH RWY 02  
EXPECT RADAR VECTORS

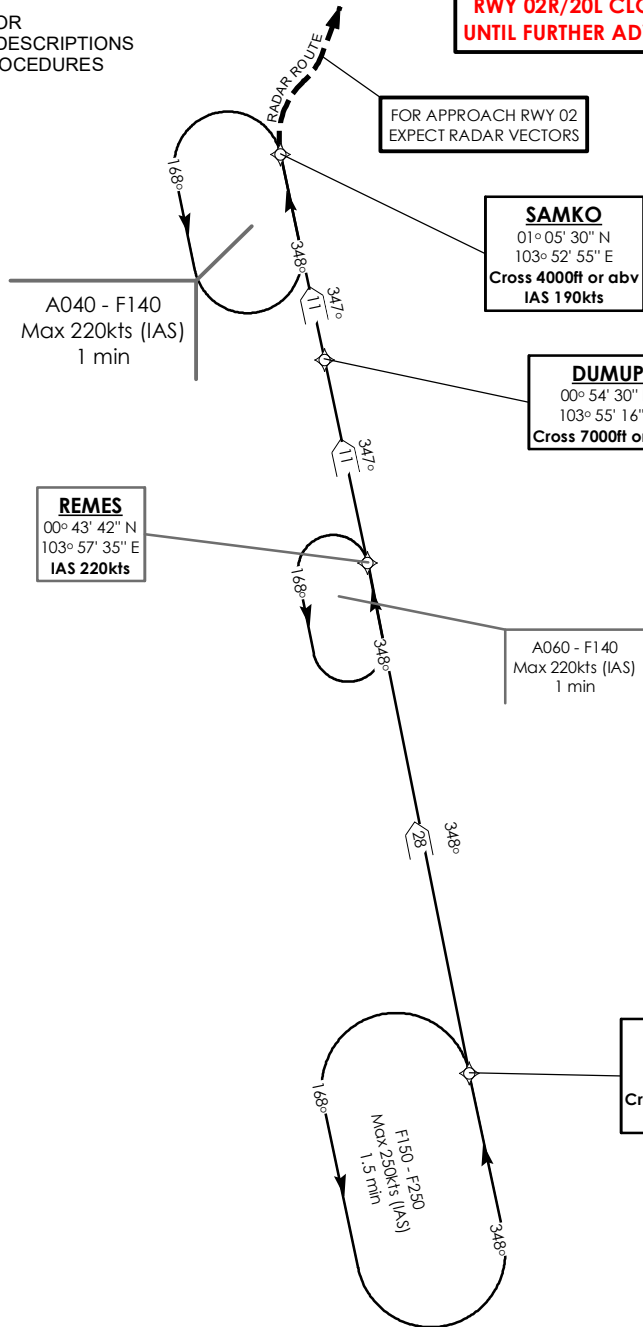
**SAMKO**  
01° 05' 30" N  
103° 52' 55" E  
Cross 4000ft or abv  
IAS 190kts

**DUMUP**  
00° 54' 30" N  
103° 55' 16" E  
Cross 7000ft or abv

**REMES**  
00° 43' 42" N  
103° 57' 35" E  
IAS 220kts

A060 - F140  
Max 220kts (IAS)  
1 min

**REPOV**  
00° 16' 23" N  
104° 03' 00" E  
Cross FL210 or blw  
IAS 250kts



NOT TO SCALE

21 MAR 2024

**REPOV 2A (STAR) RNAV GNSS RWY 02L/02C/02R - DESCRIPTIONS****Formal & Abbreviated Descriptions**

Formal Description	Abbreviated Description	Path Terminator	Fly-Over required
From REPOV at or below FL210, speed 250kts.	REPOV [FL210-; K250] -	IF	N
To REMES, speed 220kts, turn left.	REMES [K220; L] -	TF	N
To DUMUP at or above 7000ft.	DUMUP [A070+] -	TF	N
To SAMKO at or above 4000ft, speed 190kts.	SAMKO [A040+; K190]	TF	N

**Tabular Descriptions**

Path Term	Waypoint Name	Fly-Over	Course °M(°T)	Distance (NM)	Turn Direction	Altitude	Speed Limit	Navigation Spec
IF	REPOV	-	-	-	-	FL210-	K250	RNAV1
TF	REMES	-	348(348.4)	28.0	L	-	K220	RNAV1
TF	DUMUP	-	347(347.4)	11.0	-	A070+	-	RNAV1
TF	SAMKO	-	347(347.4)	11.0	-	A040+	K190	RNAV1

**Radio Communications Failure Procedure**

<b>1</b>	<b>SET TRANSPONDER TO MODE A/C CODE 7600</b>
<b>2</b>	<p><b>When cleared via REPOV 2A by Singapore ATC</b></p> <p>(a) Maintain last assigned flight level or altitude and proceed on REPOV 2A to SAMKO</p> <p>(b) From SAMKO commence descent and carry out appropriate landing procedure for RWY 02 as close as possible to EAT or ETA</p> <p>(c) If unable to effect a landing, refer to Singapore AIP for missed approach procedure</p>
<b>3</b>	<p><b>No clearance or instruction received from Singapore ATC</b></p> <p>- Refer to Singapore AIP for radio communications failure procedure</p>