

**STANDARD ARRIVAL CHART
RNAV (GNSS) -
INSTRUMENT (STAR)**

ACC 133.25
APP 124.6
119.3
TWR 118.6 / 118.25

TRANSITION ALTITUDE
11 000ft

D-ATIS AP ID-WSSS
128.025

**SINGAPORE/Singapore Changi
RWY 20R/C/L
LELIB THREE BRAVO ARRIVAL
LELIB 3B**

ELEV, ALT IN FEET
BEARINGS, TRACKS AND
RADIALS ARE MAGNETIC
VAR 0°23'E (2020)

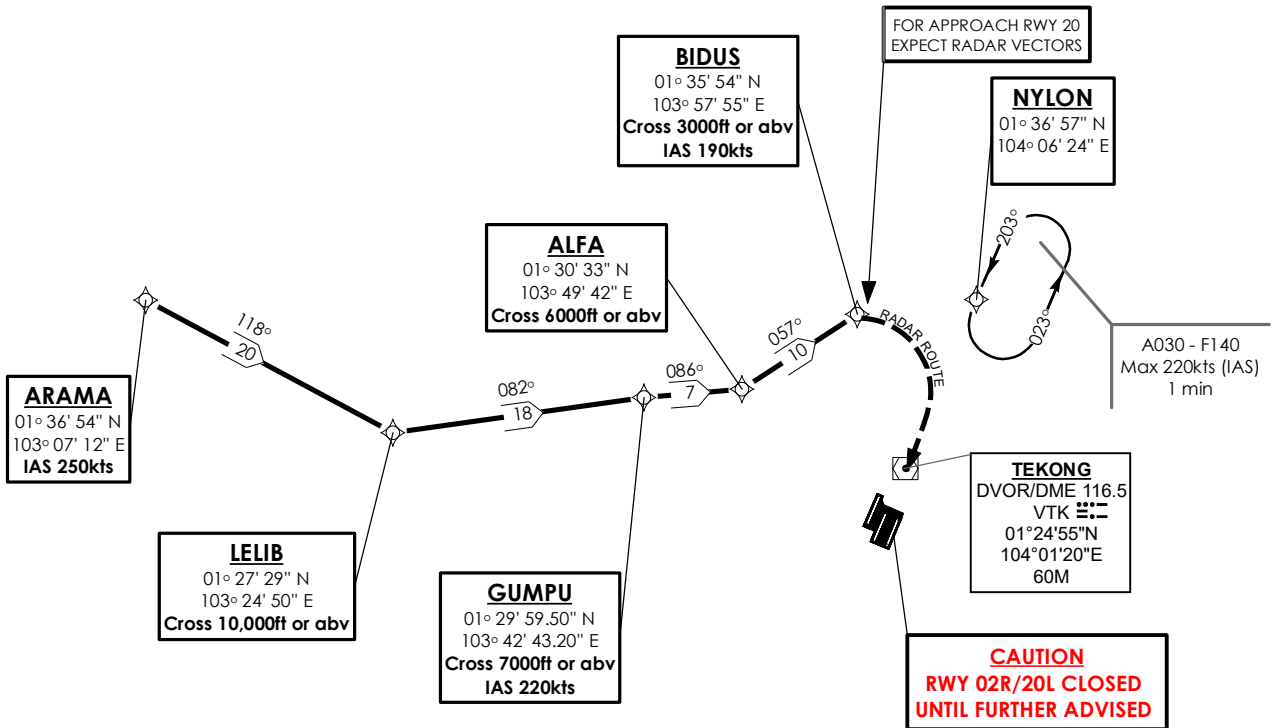
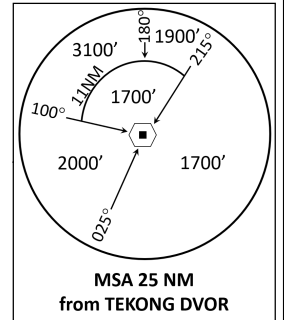
DISTANCES IN NM

CAUTION: RWY 02R/20L CLOSED UNTIL FURTHER ADVISED

NOTE: RADAR REQUIRED

NOTE: RNAV-1 NAVIGATION SPECIFICATION GNSS REQUIRED

NOTE: REFER TO BACK PAGE FOR
- FORMAL AND TABULAR DESCRIPTIONS
- RADIO COM FAILURE PROCEDURES



TEBUN 1B shall be the default STAR for WSSS RWY 20.
ATC will offer LELIB 3B when traffic permits.

NOT TO SCALE

21 MAR 2024

LELIB 3B (STAR) RNAV GNSS RWY 20R/20C/20L - DESCRIPTIONS**Formal & Abbreviated Descriptions**

Formal Description	Abbreviated Description	Path Terminator	Fly-Over required
From ARAMA, speed 250kts.	ARAMA [K250] -	IF	N
To LELIB at or above 10000ft, turn left.	LELIB [A100+; L] -	TF	N
To GUMPU at or above 7000ft, speed 220kts, turn right.	GUMPU [A070+; K220; R] -	TF	N
To ALFA at or above 6000ft, turn left.	ALFA [A060+; L] -	TF	N
To BIDUS at or above 3000ft, speed 190kts.	BIDUS [A030+; K190]	TF	N

Tabular Descriptions

Path Term	Waypoint Name	Fly-Over	Course °M(°T)	Distance (NM)	Turn Direction	Altitude	Speed Limit	Navigation Spec
IF	ARAMA	-	-	-	-	-	K250	RNAV1
TF	LELIB	-	118(118.4)	20.0	L	A100+	-	RNAV1
TF	GUMPU	-	082(082.4)	18.0	R	A070+	K220	RNAV1
TF	ALFA	-	086(086.4)	7.0	L	A060+	-	RNAV1
TF	BIDUS	-	057(057.4)	10.0	-	A030+	K190	RNAV1

Radio Communications Failure Procedure

1	SET TRANSPONDER TO MODE A/C CODE 7600
2	<p>When cleared via LELIB 3B by Singapore ATC</p> <p>(a) Maintain last assigned flight level or altitude and proceed on LELIB 3B to BIDUS, then direct to NYLON</p> <p>(b) From NYLON commence descent and carry out appropriate landing procedure for RWY 20 as close as possible to EAT or ETA</p> <p>(c) If unable to effect a landing, refer to Singapore AIP for missed approach procedure</p>
3	<p>No clearance or instruction received from Singapore ATC</p> <p>- Refer to Singapore AIP for radio communications failure procedure</p>