

**STANDARD DEPARTURE CHART  
RNAV (GNSS) -  
INSTRUMENT (SID)**

TWR 118.6 / 118.25  
APP 120.3  
124.05  
ACC 133.25

TRANSITION ALTITUDE  
11 000ft

D-ATIS AP ID-WSSS  
128.6

**SINGAPORE/Singapore Changi  
RWY 20R  
VOVOS DEPARTURES  
VOVOS 1F**

**ELEV, ALT IN FEET**

BEARINGS, TRACKS AND  
RADIALS ARE MAGNETIC  
VAR 0°23'E (2020)

DISTANCES IN NM

**GENERAL INFORMATION**

**INITIAL CLIMB  
3000FT**

**CAUTION: RWY 02R/20L CLOSED UNTIL FURTHER ADVISED**

**NOTE:** RADAR REQUIRED

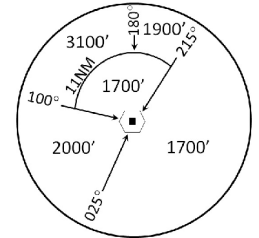
**NOTE:** RNAV-1 NAVIGATION SPECIFICATION GNSS REQUIRED

**NOTE:** ACFT UNABLE TO FLY THE SID PROFILE  
SHALL INFORM ATC PRIOR TO DEPARTURE AND  
EXPECT RADAR VECTORING IF NECESSARY

**NOTE:** WHEN TAKEN OFF THE SID, AS INSTRUCTED BY ATC,  
REFER TO ENR 1.5, SECTION 3, PARAGRAPH 3.4.2  
- FOR RWY 20R MINIMUM CLIMB GRADIENT

**NOTE:** REFER TO BACK PAGE FOR  
- FORMAL AND TABULAR DESCRIPTIONS  
- RADIO COM FAILURE PROCEDURES

**NOTE:** VOVOS SID WILL NOT BE AVAILABLE FOR  
FLIGHT PLANNING UNTIL FURTHER ADVISED



MSA 25 NM  
from TEKONG DVOR

**PROCEDURE INFORMATION**

SID SHALL NOT EXCEED IAS 230KTS UNTIL  
PASSING 4000FT AMSL AND NOT EXCEED  
IAS 250KTS UNTIL PASSING 10000FT AMSL.

CRUISING LEVELS WILL BE ISSUED AFTER TAKE-OFF  
BY SINGAPORE RADAR.

SID SHALL BE ON A MINIMUM CLIMB GRADIENT OF 6%  
UNTIL REACHING OR PASSING 2500FT, THEREAFTER 3.3%.

GND SPEED - KNOTS	75	100	150	200	250	300
6% V/V (fpm)	456	608	911	1215	1518	1821
3.3% V/V (fpm)	251	334	501	668	835	1003

**TEKONG**  
DVOR/DME 116.5  
VTK   
01° 24' 55"N  
104° 01' 20" E  
60m

**DER (RWY 20R)**  
01° 20' 47.00"N  
103° 58' 35.00"E

**LEDGX**  
01° 16' 42"N  
103° 56' 51"E  
**A015**

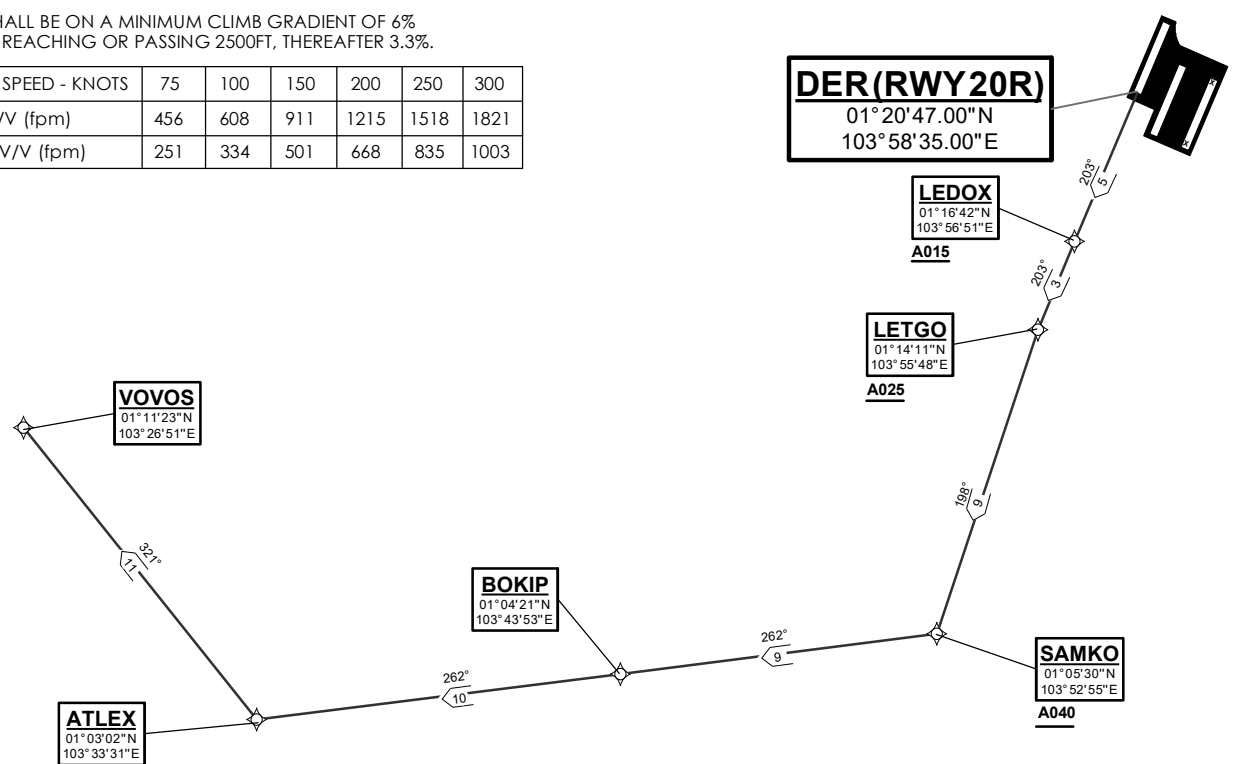
**LETGO**  
01° 14' 11"N  
103° 55' 48"E  
**A025**

**SAMKO**  
01° 05' 30"N  
103° 52' 55"E  
**A040**

**BOKIP**  
01° 04' 21"N  
103° 43' 53"E

**VOVOS**  
01° 11' 23"N  
103° 26' 51"E

**ATLEX**  
01° 03' 02"N  
103° 33' 31"E



NOT TO SCALE

**VOVOS 1F (SID) RNAV GNSS RWY 20R - DESCRIPTIONS**

**Formal & Abbreviated Descriptions**

Formal Description	Abbreviated Description	Path Terminator	Fly-Over required
To LEDOX on course 203° at or above 1500ft.	LEDOX [M203; A015+] -	CF	N
To LETGO at or above 2500ft, turn left.	LETGO [A025+; L] -	TF	N
To SAMKO at or above 4000ft, turn right.	SAMKO [A040+; R] -	TF	N
To BOKIP.	BOKIP -	TF	N
To ATLEX, turn right.	ATLEX [R] -	TF	N
To VOVOS.	VOVOS	TF	N

**Tabular Descriptions**

Path Term	Waypoint Name	Fly-Over	Course °M(°T)	Distance (NM)	Turn Direction	Altitude	Speed Limit	Navigation Spec
CF	LEDOX	-	203(203.4)	5.0	-	A015+	-	RNAV1
TF	LETGO	-	203(203.4)	3.0	L	A025+	-	RNAV1
TF	SAMKO	-	198(198.4)	9.0	R	A040+	-	RNAV1
TF	BOKIP	-	262(262.4)	9.0	-	-	-	RNAV1
TF	ATLEX	-	262(262.4)	10.0	R	-	-	RNAV1
TF	VOVOS	-	321(321.4)	11.0	-	-	-	RNAV1

**Radio Communications Failure Procedure**

<b>1</b>	<b>SET TRANSPONDER TO MODE A/C CODE 7600</b>
<b>2</b>	<p><b>COMMUNICATIONS FAILURE OCCURS IMMEDIATELY AFTER DEPARTURE:</b></p> <p>PROCEED DIRECT TO SAMKO HOLDING AREA (SHA) CLIMBING TO THE LAST ASSIGNED ALTITUDE, THEREAFTER REFER TO SINGAPORE AIP ON RADIO COMMUNICATIONS FAILURE PROCEDURE.</p>