

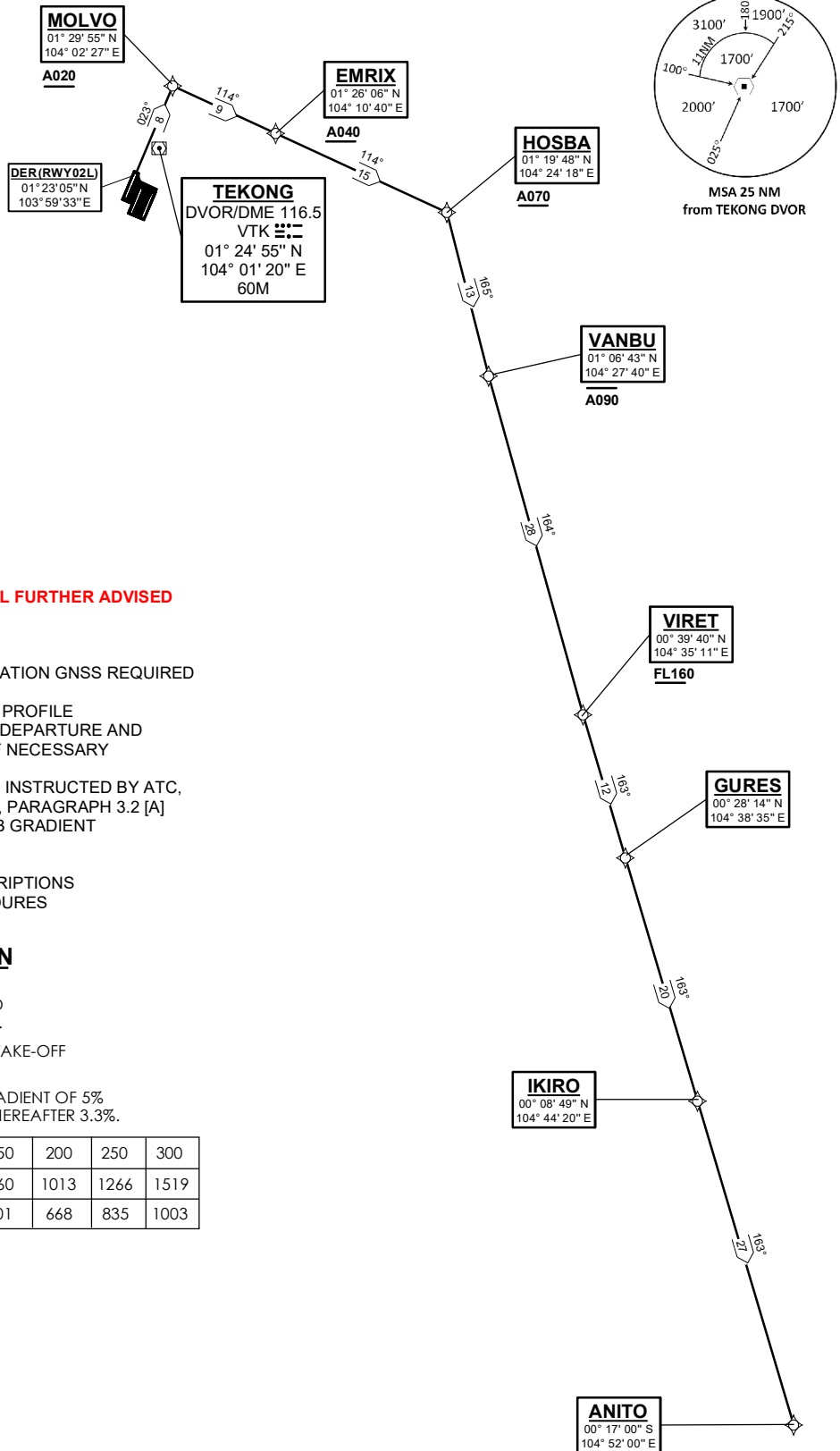
**STANDARD DEPARTURE CHART  
RNAV (GNSS) -  
INSTRUMENT (SID)**

TWR 118.6 / 118.25 APP 120.3 124.05 ACC 134.4	TRANSITION ALTITUDE 11 000ft
	D-ATIS AP ID-WSSS 128.6

**SINGAPORE/Singapore Changi  
RWY 02L  
ANITO DEPARTURES  
ANITO 7E**

ELEV, ALT IN FEET  
BEARINGS, TRACKS AND  
RADIALS ARE MAGNETIC  
VAR 0°23'E (2022)

DISTANCES IN NM



**GENERAL INFORMATION**

**INITIAL CLIMB  
3000FT**

**CAUTION: RWY 02R/20L CLOSED UNTIL FURTHER ADVISED**

- NOTE:** RADAR REQUIRED
- NOTE:** RNAV-1 NAVIGATION SPECIFICATION GNSS REQUIRED
- NOTE:** ACFT UNABLE TO FLY THE SID PROFILE SHALL INFORM ATC PRIOR TO DEPARTURE AND EXPECT RADAR VECTORED IF NECESSARY
- NOTE:** WHEN TAKEN OFF THE SID, AS INSTRUCTED BY ATC, REFER TO ENR 1.5, SECTION 3, PARAGRAPH 3.2 [A] - FOR RWY 02L MINIMUM CLIMB GRADIENT
- NOTE:** REFER TO BACK PAGE FOR
  - FORMAL AND TABULAR DESCRIPTIONS
  - RADIO COM FAILURE PROCEDURES

**PROCEDURE INFORMATION**

SID SHALL NOT EXCEED IAS 230KTS UNTIL PASSING 4000FT AMSL AND NOT EXCEED IAS 250KTS UNTIL PASSING 10000FT AMSL.  
CRUISING LEVELS WILL BE ISSUED AFTER TAKE-OFF BY SINGAPORE RADAR.  
SID SHALL BE ON A MINIMUM CLIMB GRADIENT OF 5% UNTIL REACHING OR PASSING 2500FT, THEREAFTER 3.3%.

GND SPEED - KNOTS	75	100	150	200	250	300
5% V/V (fpm)	380	506	760	1013	1266	1519
3.3% V/V (fpm)	251	334	501	668	835	1003

NOT TO SCALE

## ANITO 7E (SID) RNAV GNSS RWY 02L - DESCRIPTIONS

### Formal & Abbreviated Descriptions

Formal Description	Abbreviated Description	Path Terminator	Fly-Over required
To MOLVO on course 023° at or above 2000ft, turn right.	MOLVO [M023; A020+; R] -	CF	N
To EMRIX at or above 4000ft.	EMRIX [A040+] -	TF	N
To HOSBA at or above 7000ft, turn right.	HOSBA [A070+; R] -	TF	N
To VANBU at or below 9000ft, turn left.	VANBU [A090-; L] -	TF	N
To VIRET at or above FL160, turn left.	VIRET [FL160+; L] -	TF	N
To GURES.	GURES -	TF	N
To IKIRO.	IKIRO -	TF	N
To ANITO.	ANITO	TF	N

### Tabular Descriptions

Path Term	Waypoint Name	Fly-Over	Course °M(°T)	Distance (NM)	Turn Direction	Altitude	Speed Limit	Navigation Spec
CF	MOLVO	-	023(023.4)	8.0	R	A020+	-	RNAV1
TF	EMRIX	-	114(114.4)	9.0	-	A040+	-	RNAV1
TF	HOSBA	-	114(114.4)	15.0	R	A070+	-	RNAV1
TF	VANBU	-	165(165.4)	13.0	L	A090-	-	RNAV1
TF	VIRET	-	164(164.4)	28.0	L	FL160+	-	RNAV1
TF	GURES	-	163(163.3)	12.0	-	-	-	RNAV1
TF	IKIRO	-	163(163.3)	20.0	-	-	-	RNAV1
TF	ANITO	-	163(163.3)	27.0	-	-	-	RNAV1

### Radio Communications Failure Procedure

<b>1</b>	<b>SET TRANSPONDER TO MODE A/C CODE 7600</b>
<b>2</b>	<b>COMMUNICATIONS FAILURE OCCURS IMMEDIATELY AFTER DEPARTURE:</b>  PROCEED DIRECT TO NYLON HOLDING AREA (NHA) CLIMBING TO THE LAST ASSIGNED ALTITUDE, THEREAFTER REFER TO SINGAPORE AIP ON RADIO COMMUNICATIONS FAILURE PROCEDURE.