

**STANDARD DEPARTURE CHART  
RNAV (GNSS) -  
INSTRUMENT (SID)**

TWR 118.6 / 118.25 APP 120.3 124.05 ACC 133.25	TRANSITION ALTITUDE 11 000ft
	D-ATIS AP ID-WSSS 128.6

**SINGAPORE/Singapore Changi  
RWY 20R  
TAROS DEPARTURES  
TAROS 1F**

**ELEV, ALT IN FEET**

BEARINGS, TRACKS AND RADIALS ARE MAGNETIC  
VAR 0°23'E (2020)

DISTANCES IN NM

**GENERAL INFORMATION**

**INITIAL CLIMB  
3000FT**

**CAUTION: RWY 02R/20L CLOSED UNTIL FURTHER ADVISED**

**NOTE:** RADAR REQUIRED

**NOTE:** RNAV-1 NAVIGATION SPECIFICATION GNSS REQUIRED

**NOTE:** ACFT UNABLE TO FLY THE SID PROFILE  
SHALL INFORM ATC PRIOR TO DEPARTURE AND  
EXPECT RADAR VECTORED IF NECESSARY

**NOTE:** WHEN TAKEN OFF THE SID, AS INSTRUCTED BY ATC,  
REFER TO ENR 1.5, SECTION 3, PARAGRAPH 3.4.2  
- FOR RWY 20R MINIMUM CLIMB GRADIENT

**NOTE:** REFER TO BACK PAGE FOR  
- FORMAL AND TABULAR DESCRIPTIONS  
- RADIO COM FAILURE PROCEDURES

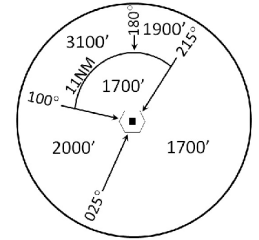
**PROCEDURE INFORMATION**

SID SHALL NOT EXCEED IAS 230KTS UNTIL  
PASSING 4000FT AMSL AND NOT EXCEED  
IAS 250KTS UNTIL PASSING 10000FT AMSL.

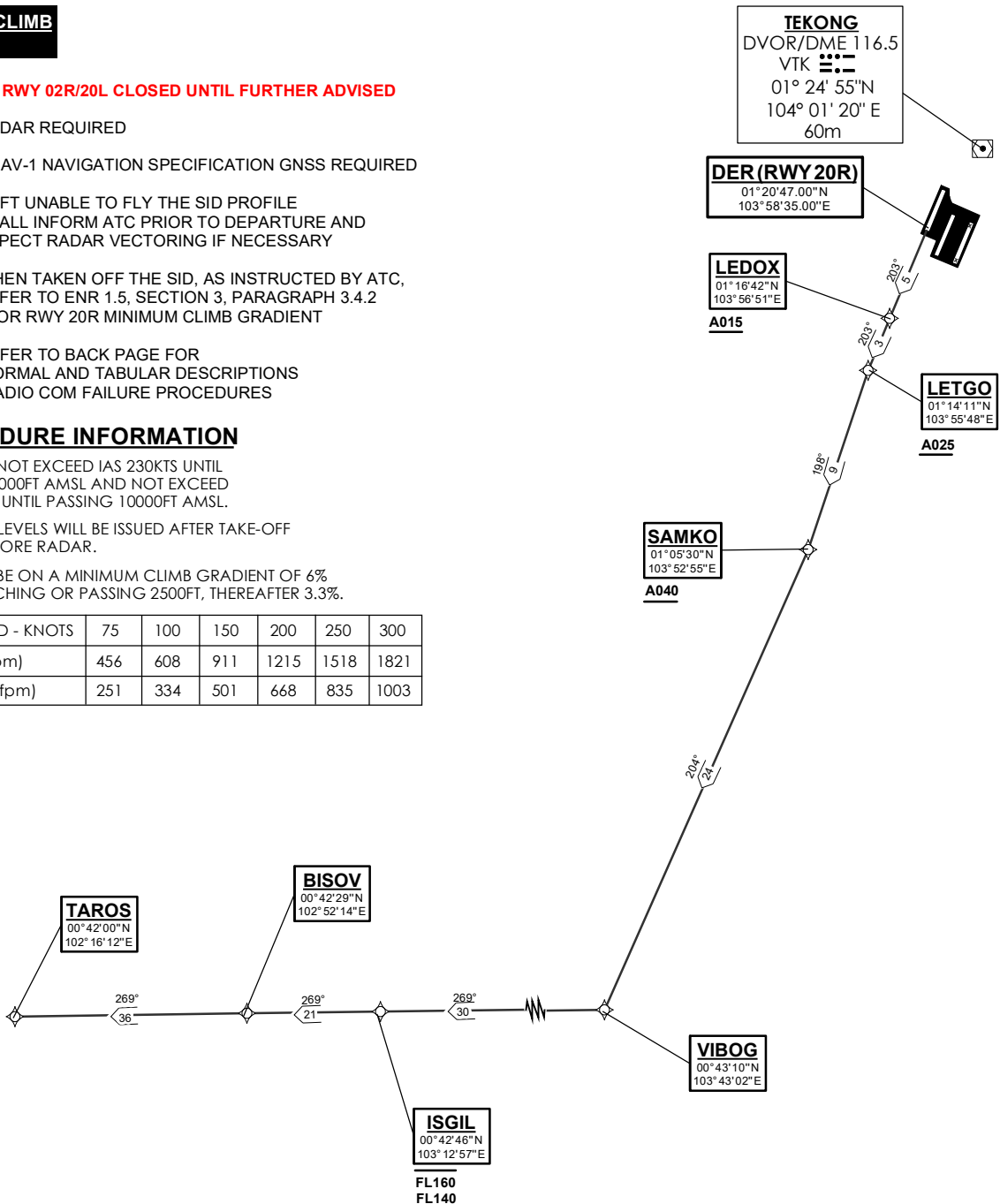
CRUISING LEVELS WILL BE ISSUED AFTER TAKE-OFF  
BY SINGAPORE RADAR.

SID SHALL BE ON A MINIMUM CLIMB GRADIENT OF 6%  
UNTIL REACHING OR PASSING 2500FT, THEREAFTER 3.3%.

GND SPEED - KNOTS	75	100	150	200	250	300
6% V/V (fpm)	456	608	911	1215	1518	1821
3.3% V/V (fpm)	251	334	501	668	835	1003



MSA 25 NM  
from TEKONG DVOR



NOT TO SCALE

## TAROS 1F (SID) RNAV GNSS RWY 20R - DESCRIPTIONS

### Formal & Abbreviated Descriptions

Formal Description	Abbreviated Description	Path Terminator	Fly-Over required
To LEDOX on course 203° at or above 1500ft.	LEDOX [M203; A015+] -	CF	N
To LETGO at or above 2500ft, turn left.	LETGO [A025+; L] -	TF	N
To SAMKO at or above 4000ft, turn right.	SAMKO [A040+; R] -	TF	N
To VIBOG, turn right.	VIBOG [R] -	TF	N
To ISGIL, between FL140 to FL160.	ISGIL [FL140+; FL160-] -	TF	N
To BISOV.	BISOV -	TF	N
To TAROS.	TAROS	TF	N

### Tabular Descriptions

Path Term	Waypoint Name	Fly-Over	Course °M(°T)	Distance (NM)	Turn Direction	Altitude	Speed Limit	Navigation Spec
CF	LEDOX	-	203(203.4)	5.0	-	A015+	-	RNAV1
TF	LETGO	-	203(203.4)	3.0	L	A025+	-	RNAV1
TF	SAMKO	-	198(198.4)	9.0	R	A040+	-	RNAV1
TF	VIBOG	-	204(204.4)	24.0	R	-	-	RNAV1
TF	ISGIL	-	269(269.4)	30.0	-	FL140+ FL160-	-	RNAV1
TF	BISOV	-	269(269.4)	21.0	-	-	-	RNAV1
TF	TAROS	-	269(269.4)	36.0	-	-	-	RNAV1

### Radio Communications Failure Procedure

1	<b>SET TRANSPONDER TO MODE A/C CODE 7600</b>
2	<p><b>COMMUNICATIONS FAILURE OCCURS IMMEDIATELY AFTER DEPARTURE:</b></p> <p>PROCEED DIRECT TO SAMKO HOLDING AREA (SHA) CLIMBING TO THE LAST ASSIGNED ALTITUDE, THEREAFTER REFER TO SINGAPORE AIP ON RADIO COMMUNICATIONS FAILURE PROCEDURE.</p>