

**STANDARD DEPARTURE CHART**  
**RNAV (GNSS) -**  
**INSTRUMENT (SID)**

TWR 118.6 / 118.25  
APP 120.3  
124.05  
ACC 133.25

TRANSITION ALTITUDE  
11 000ft

D-ATIS AP ID-WSSS  
128.6

**SINGAPORE/Singapore Changi**  
**RWY 20C**  
**TAROS DEPARTURES**  
**TAROS 1B**

**ELEV, ALT IN FEET**

BEARINGS, TRACKS AND  
RADIALS ARE MAGNETIC  
VAR 0°23'E (2020)

DISTANCES IN NM

**GENERAL INFORMATION**

**INITIAL CLIMB**  
**3000FT**

**CAUTION: RWY 02R/20L CLOSED UNTIL FURTHER ADVISED**

**NOTE:** RADAR REQUIRED

**NOTE:** RNAV-1 NAVIGATION SPECIFICATION GNSS REQUIRED

**NOTE:** ACFT UNABLE TO FLY THE SID PROFILE  
SHALL INFORM ATC PRIOR TO DEPARTURE AND  
EXPECT RADAR VECTORED IF NECESSARY

**NOTE:** WHEN TAKEN OFF THE SID, AS INSTRUCTED BY ATC,  
REFER TO ENR 1.5, SECTION 3, PARAGRAPH 3.4.1  
- FOR RWY 20C MINIMUM CLIMB GRADIENT

**NOTE:** REFER TO BACK PAGE FOR  
- FORMAL AND TABULAR DESCRIPTIONS  
- RADIO COM FAILURE PROCEDURES

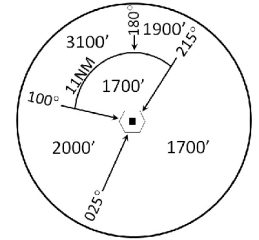
**PROCEDURE INFORMATION**

SID SHALL NOT EXCEED IAS 230KTS UNTIL  
PASSING 4000FT AMSL AND NOT EXCEED  
IAS 250KTS UNTIL PASSING 10000FT AMSL.

CRUISING LEVELS WILL BE ISSUED AFTER TAKE-OFF  
BY SINGAPORE RADAR.

SID SHALL BE ON A MINIMUM CLIMB GRADIENT OF 7%  
UNTIL REACHING OR PASSING 2500FT, THEREAFTER 3.3%.

GND SPEED - KNOTS	75	100	150	200	250	300
7% V/V (fpm)	532	709	1063	1418	1772	2127
3.3% V/V (fpm)	251	334	501	668	835	1003



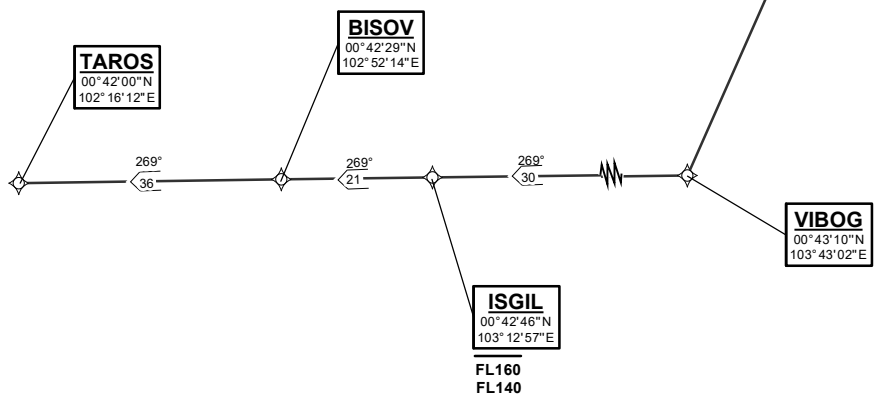
**TEKONG**  
DVOR/DME 116.5  
VTK  
01° 24' 55"N  
104° 01' 20" E  
60m

**DER (RWY 20C)**  
01° 19' 42.00"N  
103° 59' 05.00"E

**IBIXU**  
01° 16' 21"N  
103° 57' 40"E  
**A015**

**IBIVA**  
01° 13' 51"N  
103° 56' 37"E  
**A025**

**SAMKO**  
01° 05' 30"N  
103° 52' 55"E  
**A040**



NOT TO SCALE

**TAROS 1B (SID) RNAV GNSS RWY 20C - DESCRIPTIONS**

**Formal & Abbreviated Descriptions**

Formal Description	Abbreviated Description	Path Terminator	Fly-Over required
To IBIXU on course 203° at or above 1500ft.	IBIXU [M203; A015+] -	CF	N
To IBIVA at or above 2500ft, turn right.	IBIVA [A025+; R] -	TF	N
To SAMKO at or above 4000ft.	SAMKO [A040+] -	TF	N
To VIBOG, turn right.	VIBOG [R] -	TF	N
To ISGIL, between FL140 to FL160.	ISGIL [FL140+; FL160-] -	TF	N
To BISOV.	BISOV -	TF	N
To TAROS.	TAROS	TF	N

**Tabular Descriptions**

Path Term	Waypoint Name	Fly-Over	Course °M(°T)	Distance (NM)	Turn Direction	Altitude	Speed Limit	Navigation Spec
CF	IBIXU	-	203(203.4)	4.0	-	A015+	-	RNAV1
TF	IBIVA	-	203(203.4)	3.0	R	A025+	-	RNAV1
TF	SAMKO	-	204(204.4)	9.0	-	A040+	-	RNAV1
TF	VIBOG	-	204(204.4)	24.0	R	-	-	RNAV1
TF	ISGIL	-	269(269.4)	30.0	-	FL140+ FL160-	-	RNAV1
TF	BISOV	-	269(269.4)	21.0	-	-	-	RNAV1
TF	TAROS	-	269(269.4)	36.0	-	-	-	RNAV1

**Radio Communications Failure Procedure**

<b>1</b>	<b>SET TRANSPONDER TO MODE A/C CODE 7600</b>
<b>2</b>	<b>COMMUNICATIONS FAILURE OCCURS IMMEDIATELY AFTER DEPARTURE:</b>  PROCEED DIRECT TO SAMKO HOLDING AREA (SHA) CLIMBING TO THE LAST ASSIGNED ALTITUDE, THEREAFTER REFER TO SINGAPORE AIP ON RADIO COMMUNICATIONS FAILURE PROCEDURE.