

**STANDARD DEPARTURE CHART  
RNAV (GNSS) -  
INSTRUMENT (SID)**

TWR 118.6 / 118.25  
APP 120.3  
124.05  
ACC 133.25

TRANSITION ALTITUDE  
11 000ft

D-ATIS AP ID-WSSS  
128.6

**SINGAPORE/Singapore Changi  
RWY 02L  
MIBEL DEPARTURES  
MIBEL 1E**

**ELEV, ALT IN FEET**

BEARINGS, TRACKS AND  
RADIALS ARE MAGNETIC  
VAR 0°23'E (2020)

DISTANCES IN NM

**GENERAL INFORMATION**

**INITIAL CLIMB  
3000FT**

**CAUTION: RWY 02R/20L CLOSED UNTIL FURTHER ADVISED**

**NOTE:** RADAR REQUIRED

**NOTE:** RNAV-1 NAVIGATION SPECIFICATION GNSS REQUIRED

**NOTE:** ACFT UNABLE TO FLY THE SID PROFILE  
SHALL INFORM ATC PRIOR TO DEPARTURE AND  
EXPECT RADAR VECTORED IF NECESSARY

**NOTE:** WHEN TAKEN OFF THE SID, AS INSTRUCTED BY ATC,  
REFER TO ENR 1.5, SECTION 3, PARAGRAPH 3.2 [A]  
- FOR RWY 02L MINIMUM CLIMB GRADIENT

**NOTE:** REFER TO BACK PAGE FOR  
- FORMAL AND TABULAR DESCRIPTIONS  
- RADIO COM FAILURE PROCEDURES

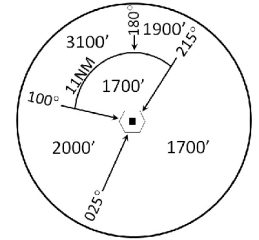
**PROCEDURE INFORMATION**

SID SHALL NOT EXCEED IAS 230KTS UNTIL  
PASSING 4000FT AMSL AND NOT EXCEED  
IAS 250KTS UNTIL PASSING 10000FT AMSL.

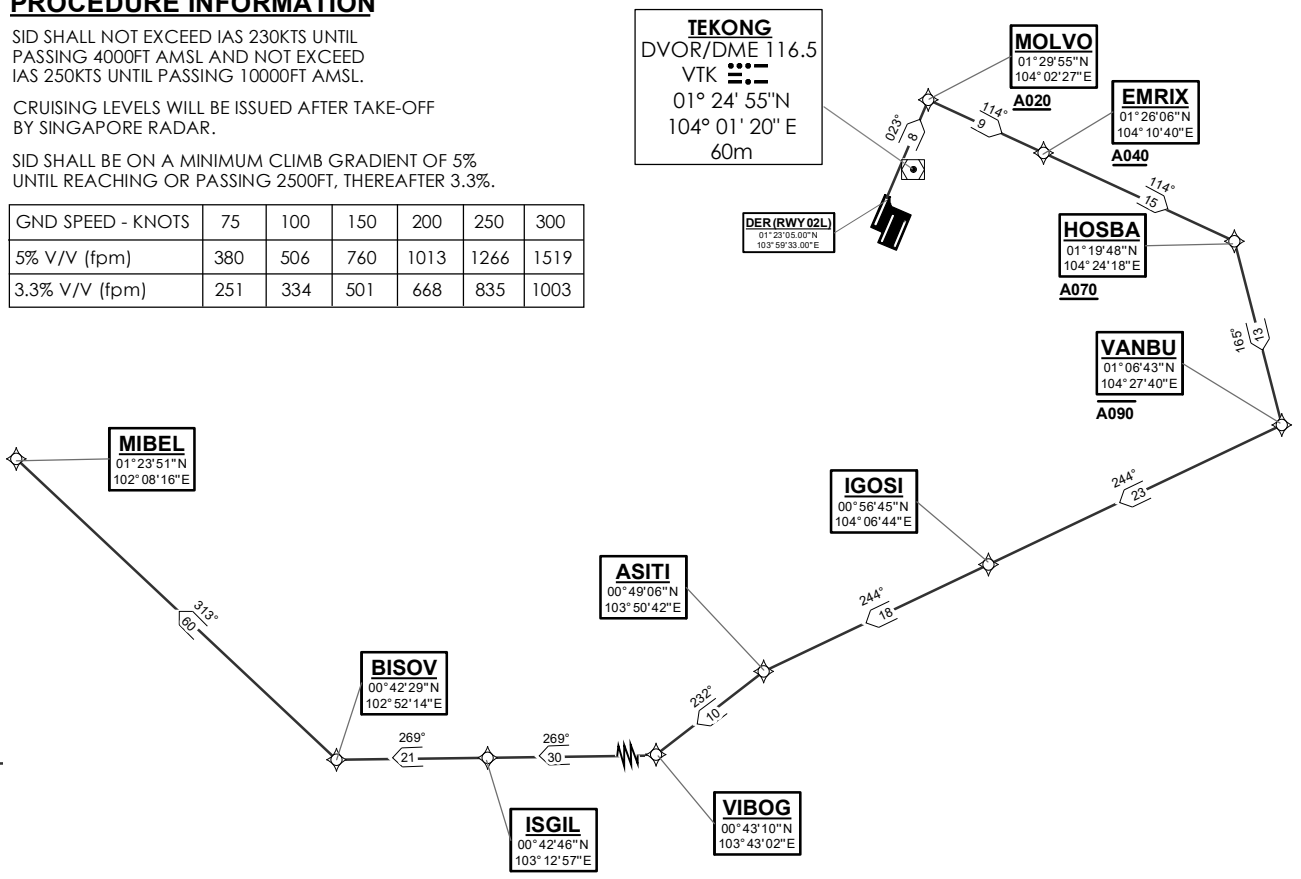
CRUISING LEVELS WILL BE ISSUED AFTER TAKE-OFF  
BY SINGAPORE RADAR.

SID SHALL BE ON A MINIMUM CLIMB GRADIENT OF 5%  
UNTIL REACHING OR PASSING 2500FT, THEREAFTER 3.3%.

GND SPEED - KNOTS	75	100	150	200	250	300
5% V/V (fpm)	380	506	760	1013	1266	1519
3.3% V/V (fpm)	251	334	501	668	835	1003



MSA 25 NM  
from TEKONG DVOR



NOT TO SCALE

21 MAR 2024

**MIBEL 1E (SID) RNAV GNSS RWY 02L - DESCRIPTIONS****Formal & Abbreviated Descriptions**

Formal Description	Abbreviated Description	Path Terminator	Fly-Over required
To MOLVO on course 023° at or above 2000ft, turn right.	MOLVO [M023; A020+; R] -	CF	N
To EMRIX at or above 4000ft.	EMRIX [A040+] -	TF	N
To HOSBA at or above 7000ft, turn right.	HOSBA [A070+; R] -	TF	N
To VANBU at or below 9000ft, turn right.	VANBU [A090-; R] -	TF	N
To IGOSI.	IGOSI -	TF	N
To ASITI, turn left.	ASITI [L] -	TF	N
To VIBOG, turn right.	VIBOG [R] -	TF	N
To ISGIL.	ISGIL -	TF	N
To BISOV, turn right.	BISOV [R] -	TF	N
To MIBEL.	MIBEL	TF	N

**Tabular Descriptions**

Path Term	Waypoint Name	Fly-Over	Course °M(°T)	Distance (NM)	Turn Direction	Altitude	Speed Limit	Navigation Spec
CF	MOLVO	-	023(023.4)	8.0	R	A020+	-	RNAV1
TF	EMRIX	-	114(114.4)	9.0	-	A040+	-	RNAV1
TF	HOSBA	-	114(114.4)	15.0	R	A070+	-	RNAV1
TF	VANBU	-	165(165.4)	13.0	R	A090-	-	RNAV1
TF	IGOSI	-	244(244.4)	23.0	-	-	-	RNAV1
TF	ASITI	-	244(244.4)	18.0	L	-	-	RNAV1
TF	VIBOG	-	232(232.3)	10.0	R	-	-	RNAV1
TF	ISGIL	-	269(269.4)	30.0	-	-	-	RNAV1
TF	BISOV	-	269(269.4)	21.0	R	-	-	RNAV1
TF	MIBEL	-	313(313.4)	60.0	-	-	-	RNAV1

**Radio Communications Failure Procedure**

1	<b>SET TRANSPONDER TO MODE A/C CODE 7600</b>
2	<b>COMMUNICATIONS FAILURE OCCURS IMMEDIATELY AFTER DEPARTURE:</b> PROCEED DIRECT TO NYLON HOLDING AREA (NHA) CLIMBING TO THE LAST ASSIGNED ALTITUDE, THEREAFTER REFER TO SINGAPORE AIP ON RADIO COMMUNICATIONS FAILURE PROCEDURE.