

**STANDARD DEPARTURE CHART
RNAV (GNSS) -
INSTRUMENT (SID)**

TWR 118.6 / 118.25
APP 120.3
124.05
ACC 133.25

TRANSITION ALTITUDE
11 000ft

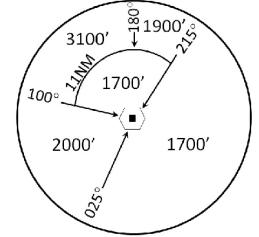
D-ATIS AP ID-WSSS
128.6

**SINGAPORE/Singapore Changi
RWY 02R
MIBEL DEPARTURES (RADAR)
MIBEL 1C**

ELEV, ALT IN FEET

BEARINGS, TRACKS AND
RADIALS ARE MAGNETIC
VAR 0°23'E (2020)

DISTANCES IN NM



MSA 25 NM
from TEKONG DVOR

GENERAL INFORMATION

**INITIAL CLIMB
3000FT**

CAUTION: RWY 02R/20L CLOSED UNTIL FURTHER ADVISED

NOTE: RADAR REQUIRED

NOTE: RNAV-1 NAVIGATION SPECIFICATION GNSS REQUIRED

NOTE: ACFT UNABLE TO FLY THE SID PROFILE
SHALL INFORM ATC PRIOR TO DEPARTURE AND
EXPECT RADAR VECTORING IF NECESSARY

NOTE: WHEN TAKEN OFF THE SID, AS INSTRUCTED BY ATC,
REFER TO ENR 1.5, SECTION 3, PARAGRAPH 3.5
- FOR RWY 02R MINIMUM CLIMB GRADIENT

NOTE: REFER TO BACK PAGE FOR
- FORMAL AND TABULAR DESCRIPTIONS
- RADIO COM FAILURE PROCEDURES

PROCEDURE INFORMATION

SID SHALL NOT EXCEED IAS 230KTS UNTIL
PASSING 4000FT AMSL AND NOT EXCEED
IAS 250KTS UNTIL PASSING 10000FT AMSL.

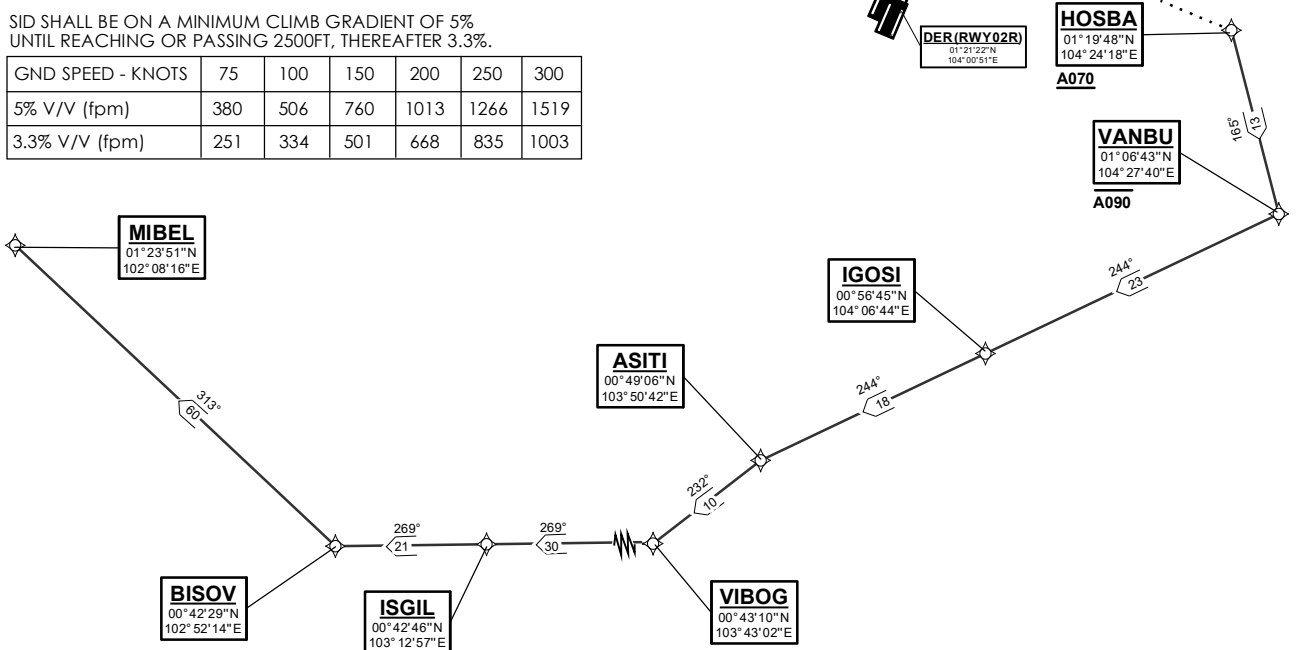
CRUISING LEVELS WILL BE ISSUED AFTER TAKE-OFF
BY SINGAPORE RADAR.

SID SHALL BE ON A MINIMUM CLIMB GRADIENT OF 5%
UNTIL REACHING OR PASSING 2500FT, THEREAFTER 3.3%.

| | | | | | | |
|-------------------|-----|-----|-----|------|------|------|
| GND SPEED - KNOTS | 75 | 100 | 150 | 200 | 250 | 300 |
| 5% V/V (fpm) | 380 | 506 | 760 | 1013 | 1266 | 1519 |
| 3.3% V/V (fpm) | 251 | 334 | 501 | 668 | 835 | 1003 |

TEKONG
DVOR/DME 116.5
VTK :
01° 24' 55"N
104° 01' 20" E
60m

**EXPECT RADAR vectors
to waypoint HOSBA**



NOT TO SCALE

21 MAR 2024

MIBEL 1C (SID) RNAV GNSS RWY 02R - DESCRIPTIONS**Formal & Abbreviated Descriptions**

| Formal Description | Abbreviated Description | Path Terminator | Fly-Over required |
|---|-------------------------|-----------------|-------------------|
| Climb heading 023°, Gradient 5% to 2500ft, thence 3.3%. Expect radar vectors to waypoint HOSBA. | - | VA | N |
| To HOSBA at or above 7000ft. | HOSBA [A070+] - | DF | N |
| To VANBU at or below 9000ft, turn right. | VANBU [A090-; R] - | TF | N |
| To IGOSI. | IGOSI - | TF | N |
| To ASITI, turn left. | ASITI [L] - | TF | N |
| To VIBOG, turn right. | VIBOG [R] - | TF | N |
| To ISGIL. | ISGIL - | TF | N |
| To BISOV, turn right. | BISOV [R] - | TF | N |
| To MIBEL. | MIBEL | TF | N |

Tabular Descriptions

| Path Term | Waypoint Name | Fly-Over | Course °M(°T) | Distance (NM) | Turn Direction | Altitude | Speed Limit | Navigation Spec |
|-----------|---------------|----------|---------------|---------------|----------------|----------|-------------|-----------------|
| VA | - | - | 023(023.4) | - | - | A030 | - | RNAV1 |
| DF | HOSBA | - | - | - | - | A070+ | - | RNAV1 |
| TF | VANBU | - | 165(165.4) | 13.0 | R | A090- | - | RNAV1 |
| TF | IGOSI | - | 244(244.4) | 23.0 | - | - | - | RNAV1 |
| TF | ASITI | - | 244(244.4) | 18.0 | L | - | - | RNAV1 |
| TF | VIBOG | - | 232(232.3) | 10.0 | R | - | - | RNAV1 |
| TF | ISGIL | - | 269(269.4) | 30.0 | - | - | - | RNAV1 |
| TF | BISOV | - | 269(269.4) | 21.0 | R | - | - | RNAV1 |
| TF | MIBEL | - | 313(313.4) | 60.0 | - | - | - | RNAV1 |

Radio Communications Failure Procedure

| | |
|---|--|
| 1 | SET TRANSPONDER TO MODE A/C CODE 7600 |
| 2 | COMMUNICATIONS FAILURE OCCURS IMMEDIATELY AFTER DEPARTURE: PROCEED DIRECT TO NYLON HOLDING AREA (NHA) CLIMBING TO THE LAST ASSIGNED ALTITUDE, THEREAFTER REFER TO SINGAPORE AIP ON RADIO COMMUNICATIONS FAILURE PROCEDURE. |