

**STANDARD DEPARTURE CHART
RNAV (GNSS) -
INSTRUMENT (SID)**

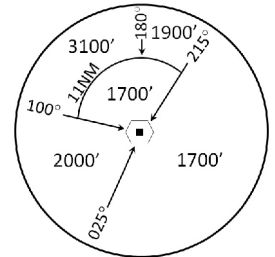
TWR 118.6 / 118.25 APP 120.3 124.05 ACC 133.25	TRANSITION ALTITUDE 11 000ft
	D-ATIS AP ID-WSSS 128.6

**SINGAPORE/Singapore Changi
RWY 20R
MASBO DEPARTURES
MASBO 5F**

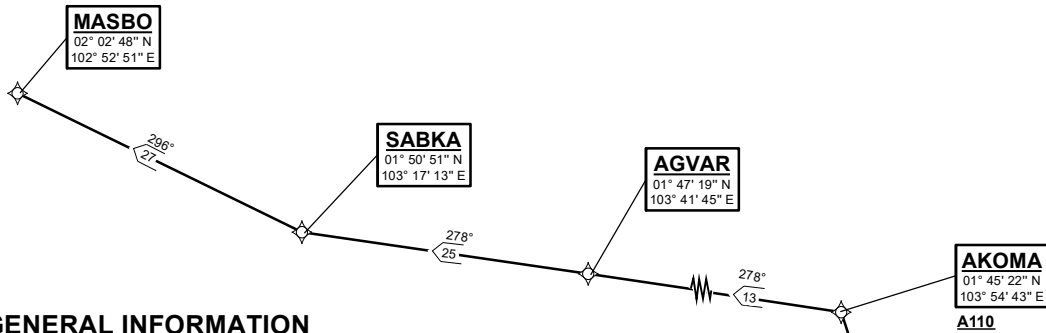
ELEV, ALT IN FEET
BEARINGS, TRACKS AND
RADIALS ARE MAGNETIC
VAR 0°23'E (2022)

NOT TO SCALE

DISTANCES IN NM



MSA 25 NM
from TEKONG DVOR



GENERAL INFORMATION

**INITIAL CLIMB
3000FT**

CAUTION: RWY 02R/20L CLOSED UNTIL FURTHER ADVISED

NOTE: RADAR REQUIRED

NOTE: RNAV-1 NAVIGATION SPECIFICATION GNSS REQUIRED

NOTE: ACFT UNABLE TO FLY THE SID PROFILE
SHALL INFORM ATC PRIOR TO DEPARTURE AND
EXPECT RADAR VECTORED IF NECESSARY

NOTE: WHEN TAKEN OFF THE SID, AS INSTRUCTED BY ATC,
REFER TO ENR 1.5, SECTION 3, PARAGRAPH 3.4.2
- FOR RWY 20R MINIMUM CLIMB GRADIENT

NOTE: REFER TO BACK PAGE FOR
- FORMAL AND TABULAR DESCRIPTIONS
- RADIO COM FAILURE PROCEDURES

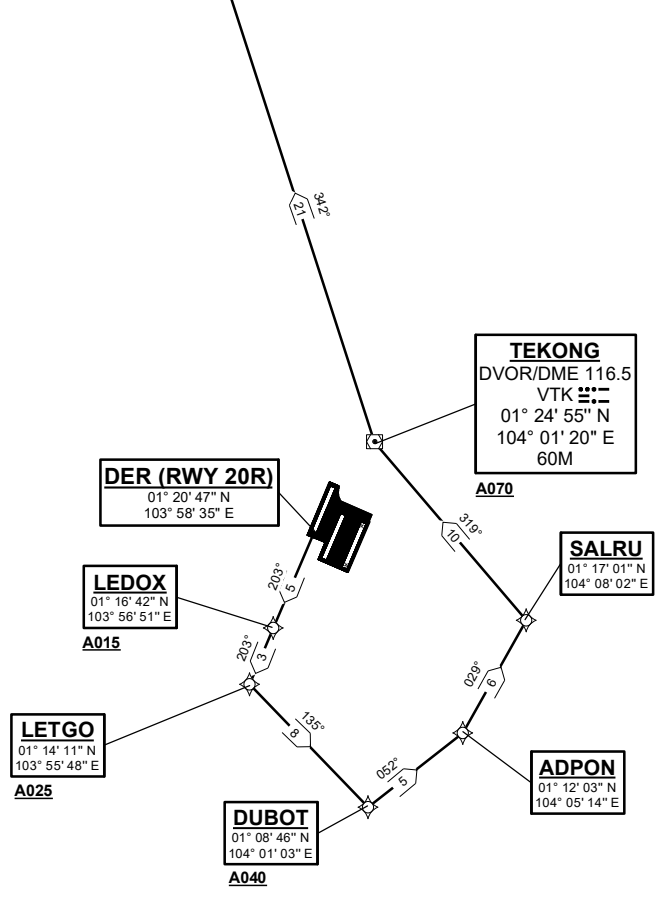
PROCEDURE INFORMATION

SID SHALL NOT EXCEED IAS 230KTS UNTIL
PASSING 4000FT AMSL AND NOT EXCEED
IAS 250KTS UNTIL PASSING 10000FT AMSL.

CRUISING LEVELS WILL BE ISSUED AFTER TAKE-OFF
BY SINGAPORE RADAR.

SID SHALL BE ON A MINIMUM CLIMB GRADIENT OF 6%
UNTIL REACHING OR PASSING 2500FT, THEREAFTER 3.3%.

GND SPEED - KNOTS	75	100	150	200	250	300
6% V/V (fpm)	456	608	911	1215	1518	1821
3.3% V/V (fpm)	251	334	501	668	835	1003



MASBO 5F (SID) RNAV GNSS RWY 20R - DESCRIPTIONS

Formal & Abbreviated Descriptions

Formal Description	Abbreviated Description	Path Terminator	Fly-Over required
To LEDOX on course 203° at or above 1500ft.	LEDOX [M203; A015+] -	CF	N
To LETGO at or above 2500ft, turn left.	LETGO [A025+; L] -	TF	N
To DUBOT at or above 4000ft, turn left.	DUBOT [A040+; L] -	TF	N
To ADPON, turn left.	ADPON [L] -	TF	N
To SALRU, turn left.	SALRU [L] -	TF	N
To VTK at or above 7000ft, turn right.	VTK [A070+; R] -	TF	N
To AKOMA at or above 11000ft, turn left.	AKOMA [A110+; L] -	TF	N
To AGVAR.	AGVAR -	TF	N
To SABKA, turn right.	SABKA [R] -	TF	N
To MASBO.	MASBO	TF	N

Tabular Descriptions

Path Term	Waypoint Name	Fly-Over	Course °M(°T)	Distance (NM)	Turn Direction	Altitude	Speed Limit	Navigation Spec
CF	LEDOX	-	203(203.4)	5.0	-	A015+	-	RNAV1
TF	LETGO	-	203(203.4)	3.0	L	A025+	-	RNAV1
TF	DUBOT	-	135(135.4)	8.0	L	A040+	-	RNAV1
TF	ADPON	-	052(052.4)	5.0	L	-	-	RNAV1
TF	SALRU	-	029(029.4)	6.0	L	-	-	RNAV1
TF	VTK	-	319(319.4)	10.0	R	A070+	-	RNAV1
TF	AKOMA	-	342(342.4)	21.0	L	A110+	-	RNAV1
TF	AGVAR	-	278(278.4)	13.0	-	-	-	RNAV1
TF	SABKA	-	278(278.4)	25.0	R	-	-	RNAV1
TF	MASBO	-	296(296.4)	27.0	-	-	-	RNAV1

Radio Communications Failure Procedure

1	SET TRANSPONDER TO MODE A/C CODE 7600
2	COMMUNICATIONS FAILURE OCCURS IMMEDIATELY AFTER DEPARTURE: PROCEED DIRECT TO SAMKO HOLDING AREA (SHA) CLIMBING TO THE LAST ASSIGNED ALTITUDE, THEREAFTER REFER TO SINGAPORE AIP ON RADIO COMMUNICATIONS FAILURE PROCEDURE.