

**STANDARD DEPARTURE CHART
RNAV (GNSS) -
INSTRUMENT (SID)**

TWR 118.6 / 118.25
APP 120.3
124.05
ACC 133.25

TRANSITION ALTITUDE
11 000ft

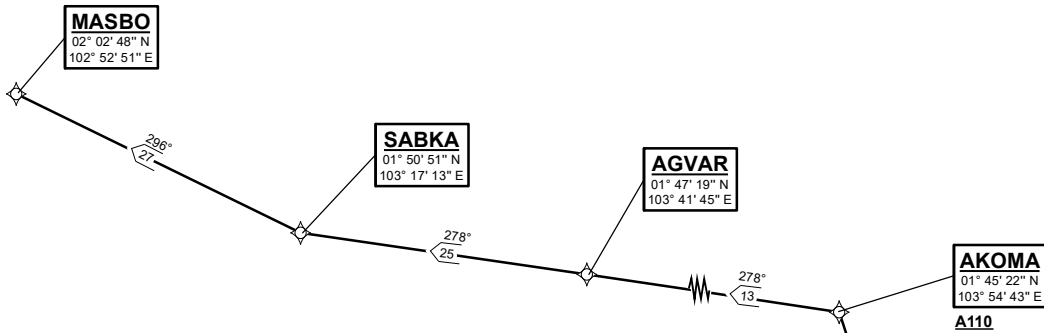
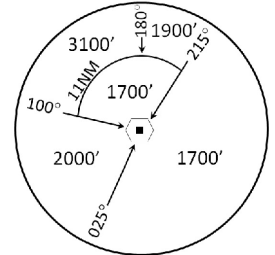
D-ATIS AP ID-WSSS
128.6

**SINGAPORE/Singapore Changi
RWY 20C
MASBO DEPARTURES
MASBO 5B**

ELEV, ALT IN FEET
BEARINGS, TRACKS AND
RADIALS ARE MAGNETIC
VAR 0°23'E (2022)

NOT TO SCALE

DISTANCES IN NM



GENERAL INFORMATION

**INITIAL CLIMB
3000FT**

CAUTION: RWY 02R/20L CLOSED UNTIL FURTHER ADVISED

NOTE: RADAR REQUIRED

NOTE: RNAV-1 NAVIGATION SPECIFICATION GNSS REQUIRED

NOTE: ACFT UNABLE TO FLY THE SID PROFILE
SHALL INFORM ATC PRIOR TO DEPARTURE AND
EXPECT RADAR VECTORED IF NECESSARY

NOTE: WHEN TAKEN OFF THE SID, AS INSTRUCTED BY ATC,
REFER TO ENR 1.5, SECTION 3, PARAGRAPH 3.4.1
- FOR RWY 20C MINIMUM CLIMB GRADIENT

NOTE: REFER TO BACK PAGE FOR
- FORMAL AND TABULAR DESCRIPTIONS
- RADIO COM FAILURE PROCEDURES

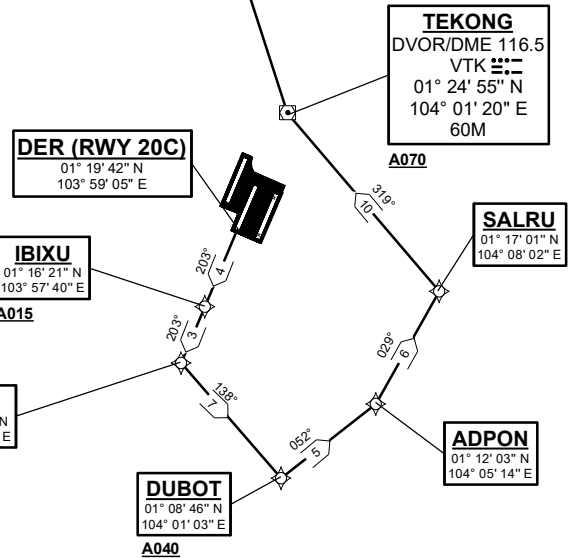
PROCEDURE INFORMATION

SID SHALL NOT EXCEED IAS 230KTS UNTIL
PASSING 4000FT AMSL AND NOT EXCEED
IAS 250KTS UNTIL PASSING 10000FT AMSL.

CRUISING LEVELS WILL BE ISSUED AFTER TAKE-OFF
BY SINGAPORE RADAR.

SID SHALL BE ON A MINIMUM CLIMB GRADIENT OF 7%
UNTIL REACHING OR PASSING 2500FT, THEREAFTER 3.3%.

GND SPEED - KNOTS	75	100	150	200	250	300
7% V/V (fpm)	532	709	1063	1418	1772	2127
3.3% V/V (fpm)	251	334	501	668	835	1003



21 MAR 2024

MASBO 5B (SID) RNAV GNSS RWY 20C - DESCRIPTIONS**Formal & Abbreviated Descriptions**

Formal Description	Abbreviated Description	Path Terminator	Fly-Over required
To IBIXU on course 203° at or above 1500ft.	IBIXU [M203; A015+] -	CF	N
To IBIVA at or above 2500ft, turn left.	IBIVA [A025+; L] -	TF	N
To DUBOT at or above 4000ft, turn left.	DUBOT [A040+; L] -	TF	N
To ADPON, turn left.	ADPON [L] -	TF	N
To SALRU, turn left.	SALRU [L] -	TF	N
To VTK at or above 7000ft, turn right.	VTK [A070+; R] -	TF	N
To AKOMA at or above 11000ft, turn left.	AKOMA [A110+; L] -	TF	N
To AGVAR.	AGVAR -	TF	N
To SABKA, turn right.	SABKA [R] -	TF	N
To MASBO.	MASBO	TF	N

Tabular Descriptions

Path Term	Waypoint Name	Fly-Over	Course °M(°T)	Distance (NM)	Turn Direction	Altitude	Speed Limit	Navigation Spec
CF	IBIXU	-	203(203.4)	4.0	-	A015+	-	RNAV1
TF	IBIVA	-	203(203.4)	3.0	L	A025+	-	RNAV1
TF	DUBOT	-	138(138.4)	7.0	L	A040+	-	RNAV1
TF	ADPON	-	052(052.4)	5.0	L	-	-	RNAV1
TF	SALRU	-	029(029.4)	6.0	L	-	-	RNAV1
TF	VTK	-	319(319.4)	10.0	R	A070+	-	RNAV1
TF	AKOMA	-	342(342.4)	21.0	L	A110+	-	RNAV1
TF	AGVAR	-	278(278.4)	13.0	-	-	-	RNAV1
TF	SABKA	-	278(278.4)	25.0	R	-	-	RNAV1
TF	MASBO	-	296(296.4)	27.0	-	-	-	RNAV1

Radio Communications Failure Procedure

1	SET TRANSPONDER TO MODE A/C CODE 7600
2	COMMUNICATIONS FAILURE OCCURS IMMEDIATELY AFTER DEPARTURE: PROCEED DIRECT TO SAMKO HOLDING AREA (SHA) CLIMBING TO THE LAST ASSIGNED ALTITUDE, THEREAFTER REFER TO SINGAPORE AIP ON RADIO COMMUNICATIONS FAILURE PROCEDURE.