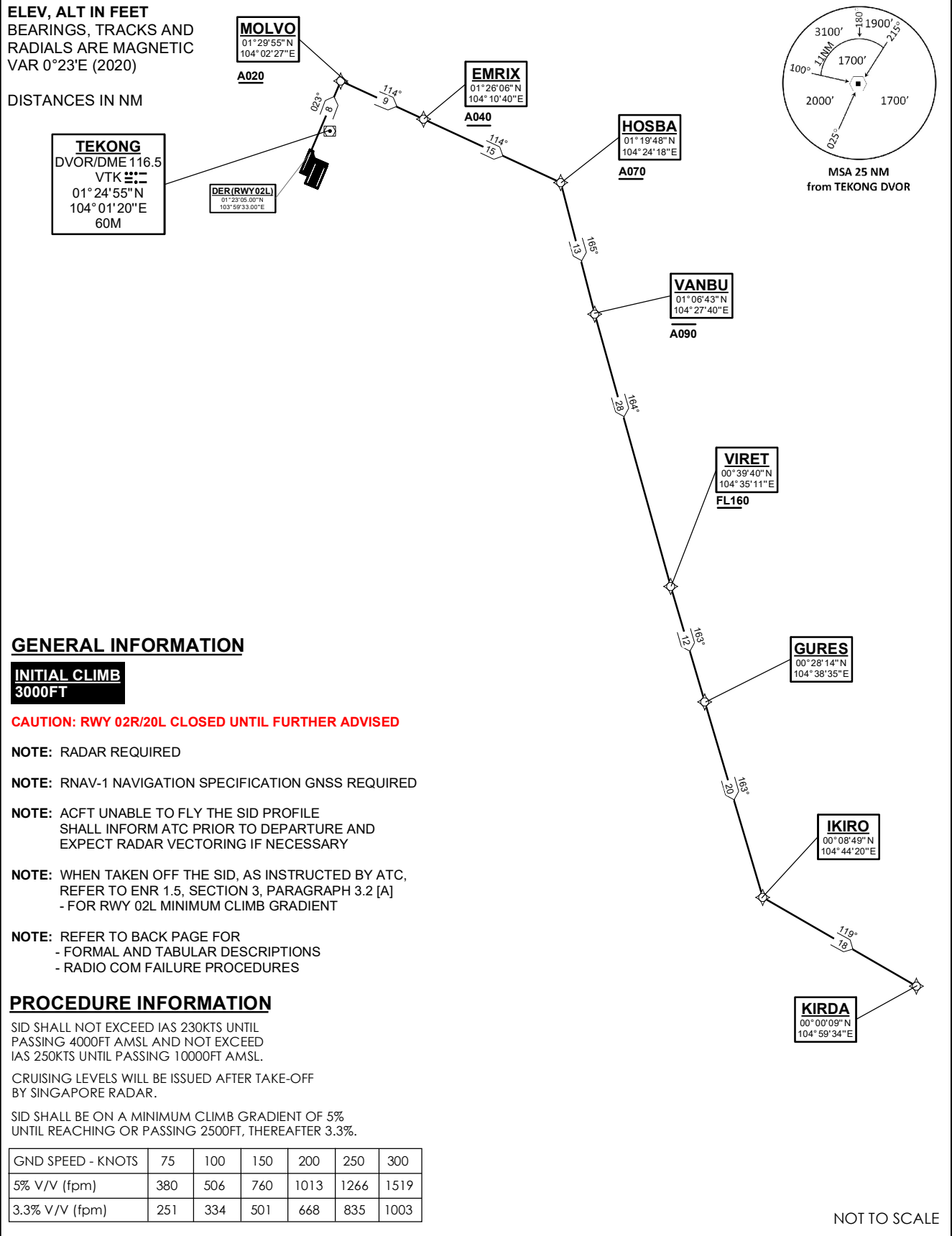


**STANDARD DEPARTURE CHART
RNAV (GNSS) -
INSTRUMENT (SID)**

TWR 118.6 / 118.25 APP 120.3 124.05 ACC 134.4	TRANSITION ALTITUDE 11 000ft
	D-ATIS AP ID-WSSS 128.6

**SINGAPORE/Singapore Changi
RWY 02L
KIRDA DEPARTURES
KIRDA 1E**



KIRDA 1E (SID) RNAV GNSS RWY 02L - DESCRIPTIONS

Formal & Abbreviated Descriptions

Formal Description	Abbreviated Description	Path Terminator	Fly-Over required
To MOLVO on course 023° at or above 2000ft, turn right.	MOLVO [M023; A020+; R] -	CF	N
To EMRIX at or above 4000ft.	EMRIX [A040+] -	TF	N
To HOSBA at or above 7000ft, turn right.	HOSBA [A070+; R] -	TF	N
To VANBU at or below 9000ft, turn left.	VANBU [A090-; L] -	TF	N
To VIRET at or above FL160, turn left.	VIRET [FL160+; L] -	TF	N
To GURES.	GURES -	TF	N
To IKIRO, turn left.	IKIRO [L] -	TF	N
To KIRDA.	KIRDA	TF	N

Tabular Descriptions

Path Term	Waypoint Name	Fly-Over	Course °M(°T)	Distance (NM)	Turn Direction	Altitude	Speed Limit	Navigation Spec
CF	MOLVO	-	023(023.4)	8.0	R	A020+	-	RNAV1
TF	EMRIX	-	114(114.4)	9.0	-	A040+	-	RNAV1
TF	HOSBA	-	114(114.4)	15.0	R	A070+	-	RNAV1
TF	VANBU	-	165(165.4)	13.0	L	A090-	-	RNAV1
TF	VIRET	-	164(164.4)	28.0	L	FL160+	-	RNAV1
TF	GURES	-	163(163.4)	12.0	-	-	-	RNAV1
TF	IKIRO	-	163(163.4)	20.0	L	-	-	RNAV1
TF	KIRDA	-	119(119.4)	18.0	-	-	-	RNAV1

Radio Communications Failure Procedure

1	SET TRANSPONDER TO MODE A/C CODE 7600
2	<p>COMMUNICATIONS FAILURE OCCURS IMMEDIATELY AFTER DEPARTURE:</p> <p>PROCEED DIRECT TO NYLON HOLDING AREA (NHA) CLIMBING TO THE LAST ASSIGNED ALTITUDE, THEREAFTER REFER TO SINGAPORE AIP ON RADIO COMMUNICATIONS FAILURE PROCEDURE.</p>