

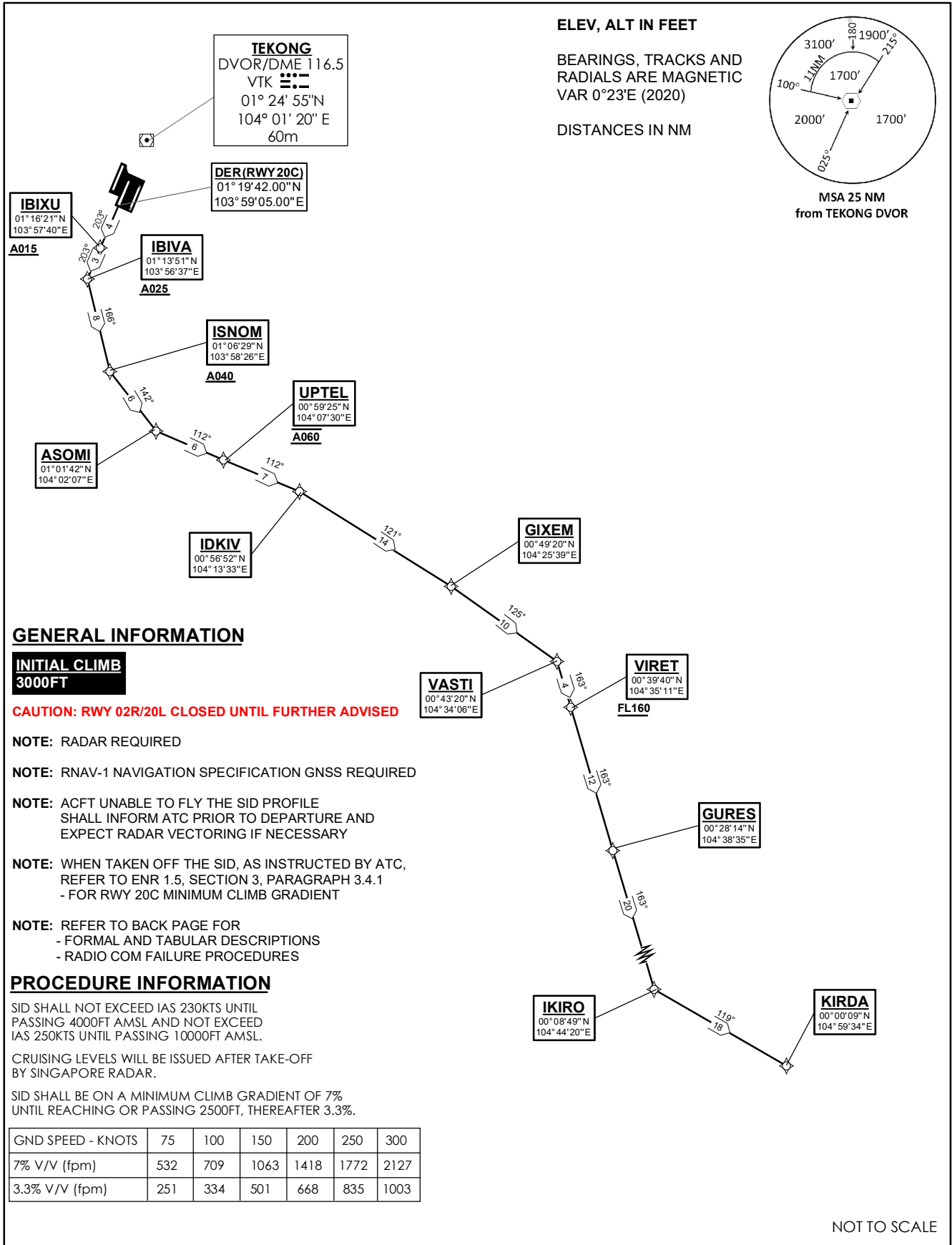
**STANDARD DEPARTURE CHART
RNAV (GNSS) -
INSTRUMENT (SID)**

TWR 118.6 / 118.25
APP 120.3
124.05
ACC 134.4

TRANSITION ALTITUDE
11 000ft

D-ATIS AP ID-WSSS
128.6

**SINGAPORE/Singapore Changi
RWY 20C
KIRDA DEPARTURES
KIRDA 1B**



21 MAR 2024

KIRDA 1B (SID) RNAV GNSS RWY 20C - DESCRIPTIONS**Formal & Abbreviated Descriptions**

Formal Description	Abbreviated Description	Path Terminator	Fly-Over required
To IBIXU on course 203° at or above 1500ft.	IBIXU [M203; A015+] -	CF	N
To IBIVA at or above 2500ft, turn left.	IBIVA [A025+; L] -	TF	N
To ISNOM at or above 4000ft, turn left.	ISNOM [A040+; L] -	TF	N
To ASOMI, turn left.	ASOMI [L] -	TF	N
To UPTTEL at 6000ft.	UPTTEL [@A060] -	TF	N
To IDKIV, turn right.	IDKIV [R] -	TF	N
To GIXEM, turn right.	GIXEM [R] -	TF	N
To VASTI, turn right.	VASTI [R] -	TF	N
To VIRET at or above FL160.	VIRET [FL160+] -	TF	N
To GURES.	GURES -	TF	N
To IKIRO, turn left.	IKIRO [L] -	TF	N
To KIRDA.	KIRDA	TF	N

Tabular Descriptions

Path Term	Waypoint Name	Fly-Over	Course °M(°T)	Distance (NM)	Turn Direction	Altitude	Speed Limit	Navigation Spec
CF	IBIXU	-	203(203.4)	4.0	-	A015+	-	RNAV1
TF	IBIVA	-	203(203.4)	3.0	L	A025+	-	RNAV1
TF	ISNOM	-	166(166.4)	8.0	L	A040+	-	RNAV1
TF	ASOMI	-	142(142.4)	6.0	L	-	-	RNAV1
TF	UPTTEL	-	112(112.4)	6.0	-	@A060	-	RNAV1
TF	IDKIV	-	112(112.4)	7.0	R	-	-	RNAV1
TF	GIXEM	-	121(121.4)	14.0	R	-	-	RNAV1
TF	VASTI	-	125(125.4)	10.0	R	-	-	RNAV1
TF	VIRET	-	163(163.4)	4.0	-	FL160+	-	RNAV1
TF	GURES	-	163(163.4)	12.0	-	-	-	RNAV1
TF	IKIRO	-	163(163.4)	20.0	L	-	-	RNAV1
TF	KIRDA	-	119(119.4)	18.0	-	-	-	RNAV1

Radio Communications Failure Procedure

1	SET TRANSPONDER TO MODE A/C CODE 7600
2	COMMUNICATIONS FAILURE OCCURS IMMEDIATELY AFTER DEPARTURE: PROCEED DIRECT TO SAMKO HOLDING AREA (SHA) CLIMBING TO THE LAST ASSIGNED ALTITUDE, THEREAFTER REFER TO SINGAPORE AIP ON RADIO COMMUNICATIONS FAILURE PROCEDURE.