

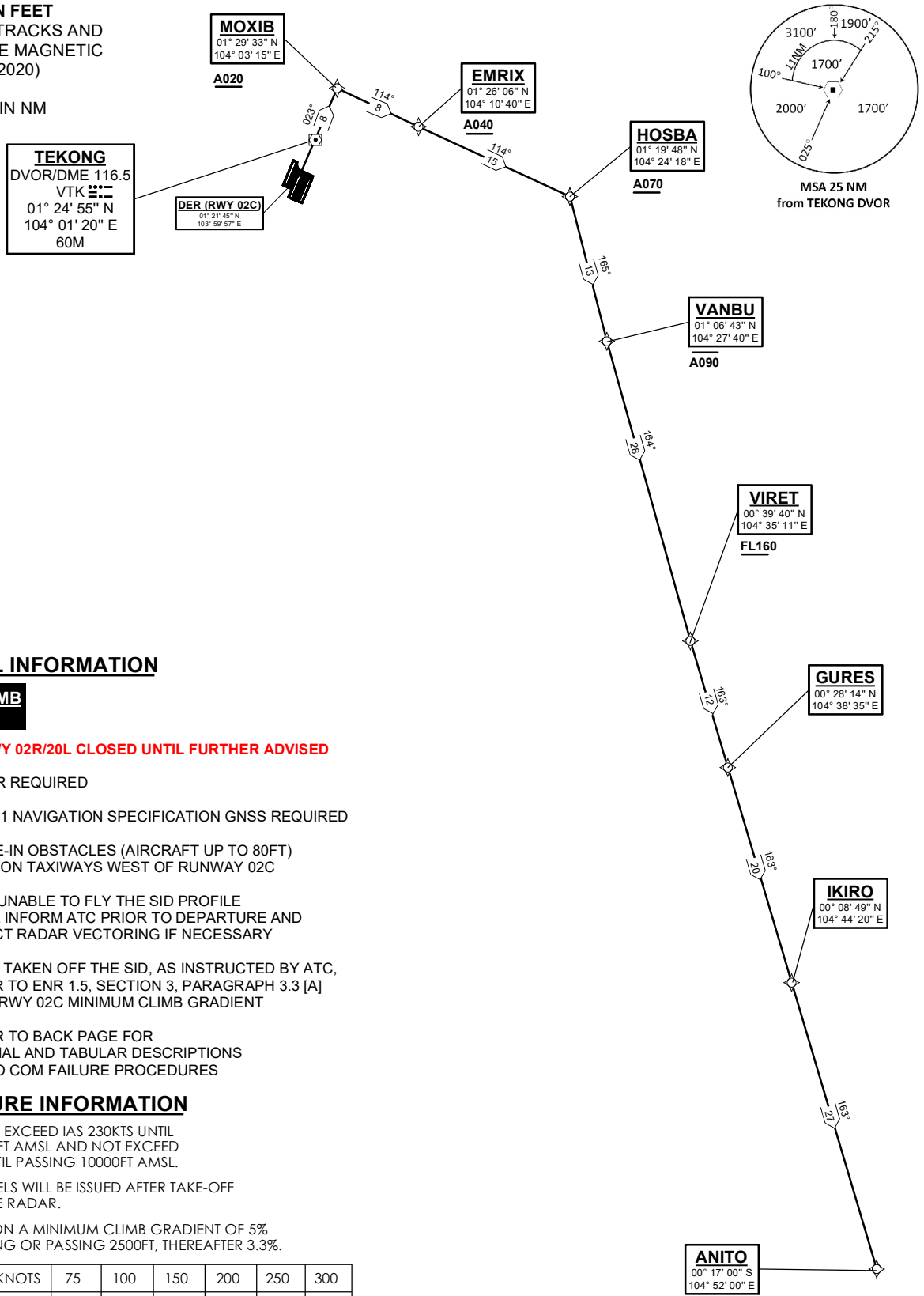
**STANDARD DEPARTURE CHART
RNAV (GNSS) -
INSTRUMENT (SID)**

TWR 118.6 / 118.25 APP 120.3 124.05 ACC 134.4	TRANSITION ALTITUDE 11 000ft
	D-ATIS AP ID-WSSS 128.6

**SINGAPORE/Singapore Changi
RWY 02C
ANITO DEPARTURES
ANITO 7A**

ELEV, ALT IN FEET
BEARINGS, TRACKS AND
RADIALS ARE MAGNETIC
VAR 0°23'E (2020)

DISTANCES IN NM



GENERAL INFORMATION

**INITIAL CLIMB
3000FT**

CAUTION: RWY 02R/20L CLOSED UNTIL FURTHER ADVISED

- NOTE:** RADAR REQUIRED
- NOTE:** RNAV-1 NAVIGATION SPECIFICATION GNSS REQUIRED
- NOTE:** CLOSE-IN OBSTACLES (AIRCRAFT UP TO 80FT) EXIST ON TAXIWAYS WEST OF RUNWAY 02C
- NOTE:** ACFT UNABLE TO FLY THE SID PROFILE SHALL INFORM ATC PRIOR TO DEPARTURE AND EXPECT RADAR VECTORING IF NECESSARY
- NOTE:** WHEN TAKEN OFF THE SID, AS INSTRUCTED BY ATC, REFER TO ENR 1.5, SECTION 3, PARAGRAPH 3.3 [A] - FOR RWY 02C MINIMUM CLIMB GRADIENT
- NOTE:** REFER TO BACK PAGE FOR
- FORMAL AND TABULAR DESCRIPTIONS
- RADIO COM FAILURE PROCEDURES

PROCEDURE INFORMATION

SID SHALL NOT EXCEED IAS 230KTS UNTIL PASSING 4000FT AMSL AND NOT EXCEED IAS 250KTS UNTIL PASSING 10000FT AMSL.
CRUISING LEVELS WILL BE ISSUED AFTER TAKE-OFF BY SINGAPORE RADAR.
SID SHALL BE ON A MINIMUM CLIMB GRADIENT OF 5% UNTIL REACHING OR PASSING 2500FT, THEREAFTER 3.3%.

GND SPEED - KNOTS	75	100	150	200	250	300
5% V/V (fpm)	380	506	760	1013	1266	1519
3.3% V/V (fpm)	251	334	501	668	835	1003

NOT TO SCALE

ANITO 7A (SID) RNAV GNSS RWY 02C - DESCRIPTIONS

Formal & Abbreviated Descriptions

Formal Description	Abbreviated Description	Path Terminator	Fly-Over required
To MOXIB on course 023° at or above 2000ft, turn right.	MOXIB [M023; A020+; R] -	CF	N
To EMRIX at or above 4000ft.	EMRIX [A040+] -	TF	N
To HOSBA at or above 7000ft, turn right.	HOSBA [A070+; R] -	TF	N
To VANBU at or below 9000ft, turn left.	VANBU [A090-; L] -	TF	N
To VIRET at or above FL160, turn left.	VIRET [FL160+; L] -	TF	N
To GURES.	GURES -	TF	N
To IKIRO.	IKIRO -	TF	N
To ANITO.	ANITO	TF	N

Tabular Descriptions

Path Term	Waypoint Name	Fly-Over	Course °M(°T)	Distance (NM)	Turn Direction	Altitude	Speed Limit	Navigation Spec
CF	MOXIB	-	023(023.4)	8.0	R	A020+	-	RNAV1
TF	EMRIX	-	114(114.4)	8.0	-	A040+	-	RNAV1
TF	HOSBA	-	114(114.4)	15.0	R	A070+	-	RNAV1
TF	VANBU	-	165(165.4)	13.0	L	A090-	-	RNAV1
TF	VIRET	-	164(164.4)	28.0	L	FL160+	-	RNAV1
TF	GURES	-	163(163.3)	12.0	-	-	-	RNAV1
TF	IKIRO	-	163(163.3)	20.0	-	-	-	RNAV1
TF	ANITO	-	163(163.3)	27.0	-	-	-	RNAV1

Radio Communications Failure Procedure

1	SET TRANSPONDER TO MODE A/C CODE 7600
2	<p>COMMUNICATIONS FAILURE OCCURS IMMEDIATELY AFTER DEPARTURE:</p> <p>PROCEED DIRECT TO NYLON HOLDING AREA (NHA) CLIMBING TO THE LAST ASSIGNED ALTITUDE, THEREAFTER REFER TO SINGAPORE AIP ON RADIO COMMUNICATIONS FAILURE PROCEDURE.</p>