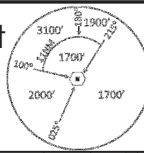


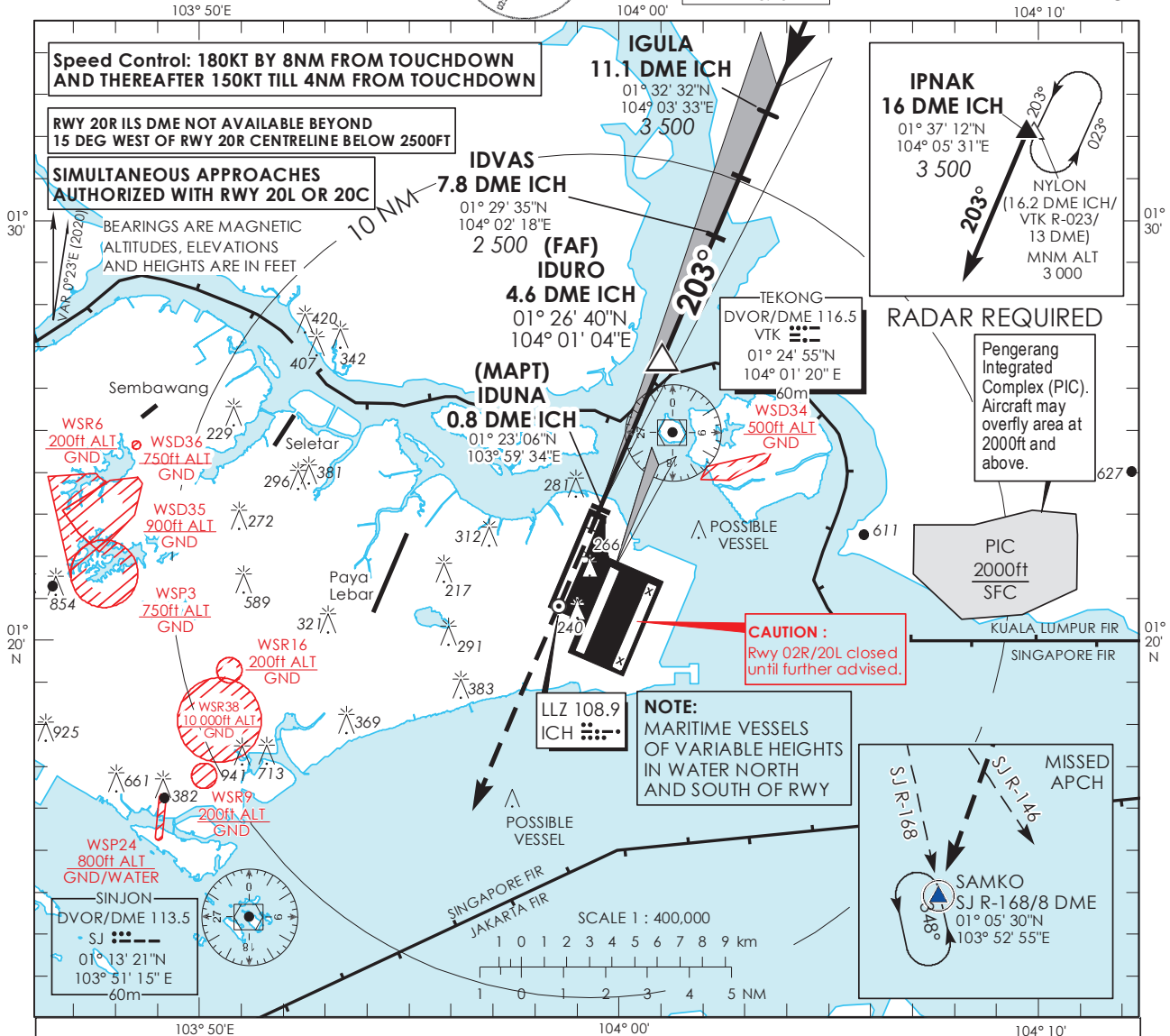
**INSTRUMENT
APPROACH
CHART - ICAO**

AERODROME ELEV **22ft**
HEIGHT RELATED TO
DTHR RWY 20R - ELEV **13ft**



D-ATIS AP ID WSSS	128.025
APP	124.05
TWR	119.3
	118.6
	118.25

**SINGAPORE/
SINGAPORE CHANGI
ICH ILS/DME
RWY 20R**



This procedure requires a missed approach climb gradient of 3.7% (225 ft/NM) until passing 2,500ft.
For aircraft which can only achieve a 2.5% (152 ft/NM) climb gradient, the CAT I OCA (OCH) is 693ft (680ft).

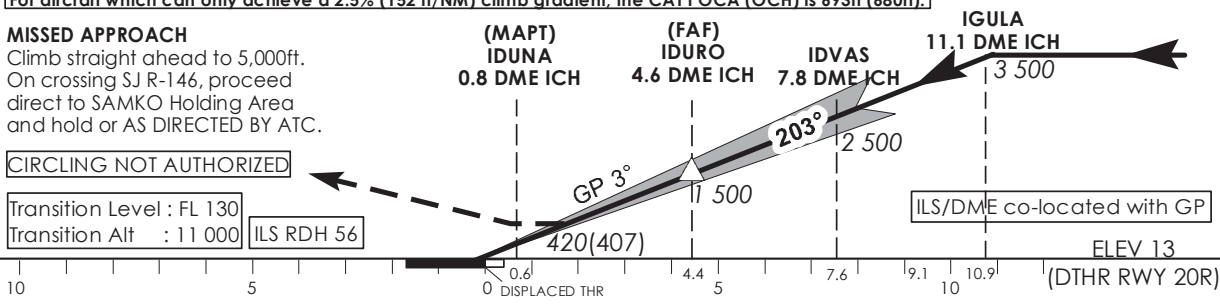
MISSED APPROACH

Climb straight ahead to 5,000ft.
On crossing SJ R-146, proceed direct to SAMKO Holding Area and hold or AS DIRECTED BY ATC.

CIRCLING NOT AUTHORIZED

Transition Level : FL 130
Transition Alt : 11 000

ILS RDH 56



* TIMING NOT AUTHORIZED WHEN GP INOP

Category of Aircraft		OCA (OCH)				
		A	B	C	D	D _L
Straight-in	CAT I ILS	152 (139)	159 (146)	179 (166)	192 (179)	195 (182)
	GP INOP	420 (407)				
Distance	4 DME	3 DME		2 DME		
Altitude (Height)	1290 (1277)	970 (957)		650 (637)		
Speed	knots	70	120	150	185	
FAF - MAPT 3.9nm	min : s *	3 : 21	1 : 57	1 : 34	1 : 16	
Rate of descent/GS	ft/min	370	635	795	980	