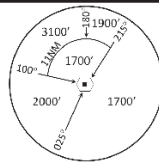


**INSTRUMENT APPROACH CHART**

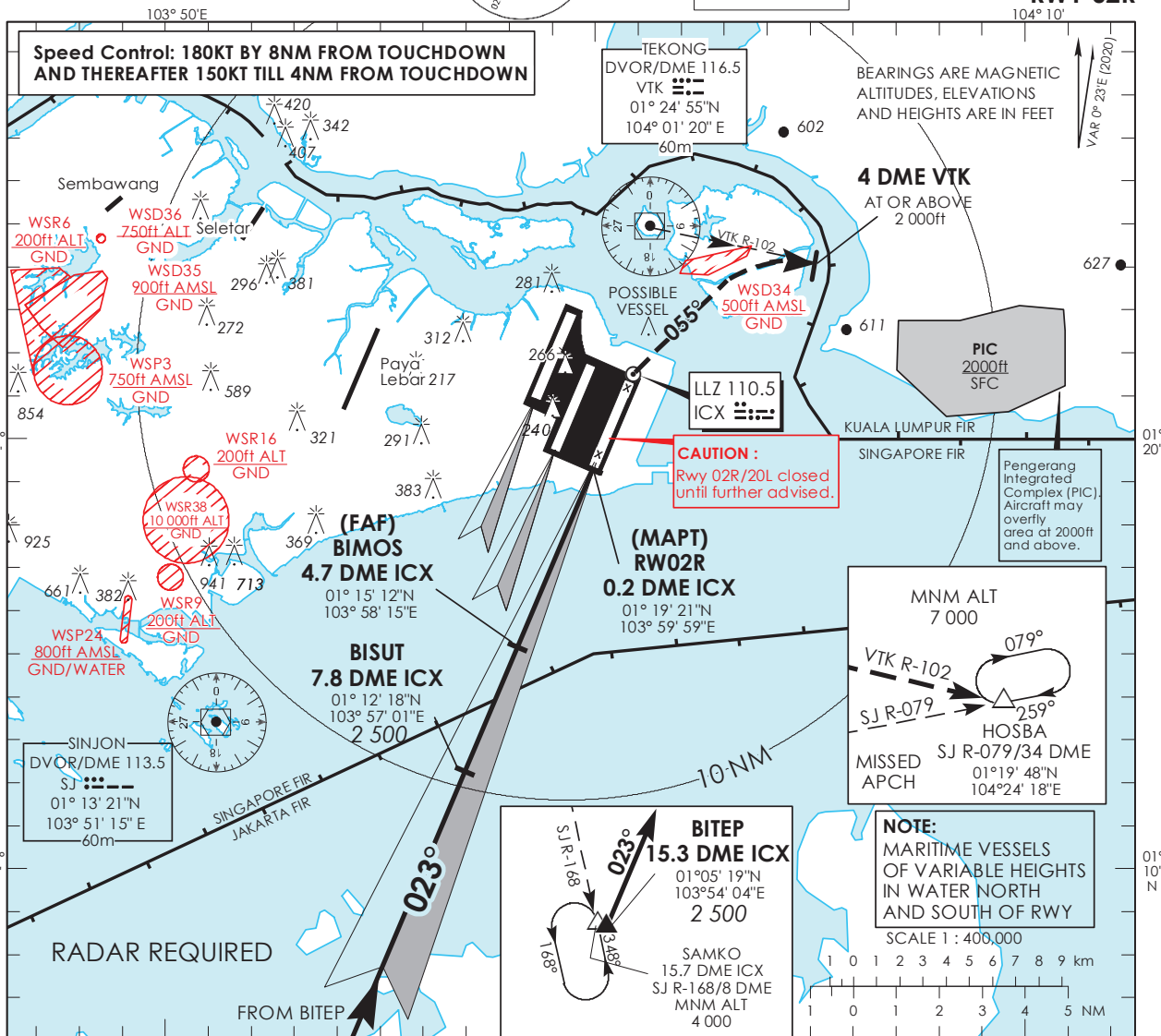
AERODROME ELEV **22ft**  
HEIGHT RELATED TO  
THR RWY 02R - ELEV **16ft**



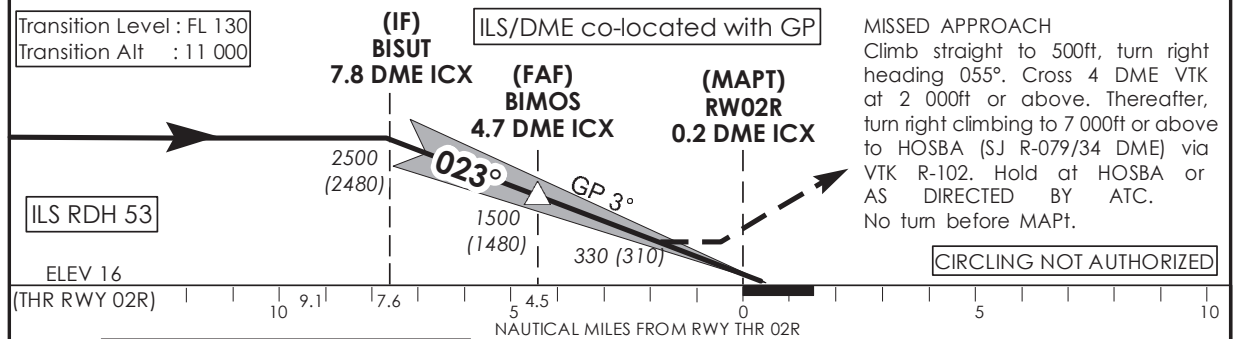
MSA 25 NM  
from TEKONG DVOR

D-ATIS	AP ID WSSS
APP	128.025
APP	124.05
TWR	119.3
TWR	131.4

**SINGAPORE/ SINGAPORE CHANGI ICX ILS/DME RWY 02R**



- This procedure requires a missed approach climb gradient of 5% (304 ft/NM) until passing 2,000ft. MAX IAS 185kts during turning missed approach.
- For aircraft which can only achieve a 2.5% (152 ft/NM) climb gradient, the OCA (OCH) is 820ft (800ft) and aircraft shall climb straight to 1200ft before commencing right turn climbing to 7000ft or above to HOSBA.



\*TIMING NOT AUTHORIZED WHEN GP INOP

Category of Aircraft	OCA (OCH)			
	A	B	C	D
Straight-in	CAT I ILS	220 (200)		
	CAT II ILS	120 (100)		
	GP INOP	330 (310)		

Distance	4 DME	3 DME	2 DME		
Altitude (Height)	1300 (1280)	980 (960)	660 (640)		
Speed	knots	70	120	150	185
FAF - MAPT 4.5nm	min : s *	3 : 52	2 : 15	1 : 48	1 : 28
Rate of descent/GS	ft/min	630	1080	1350	1665