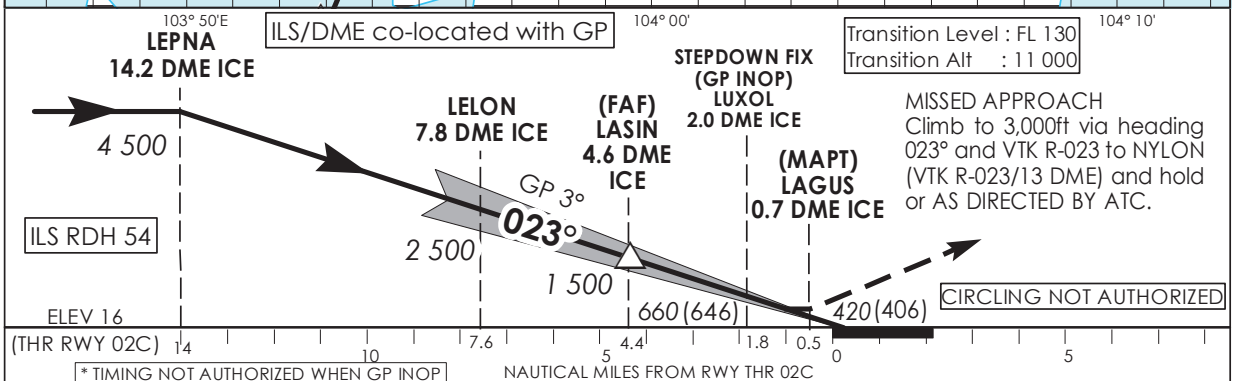
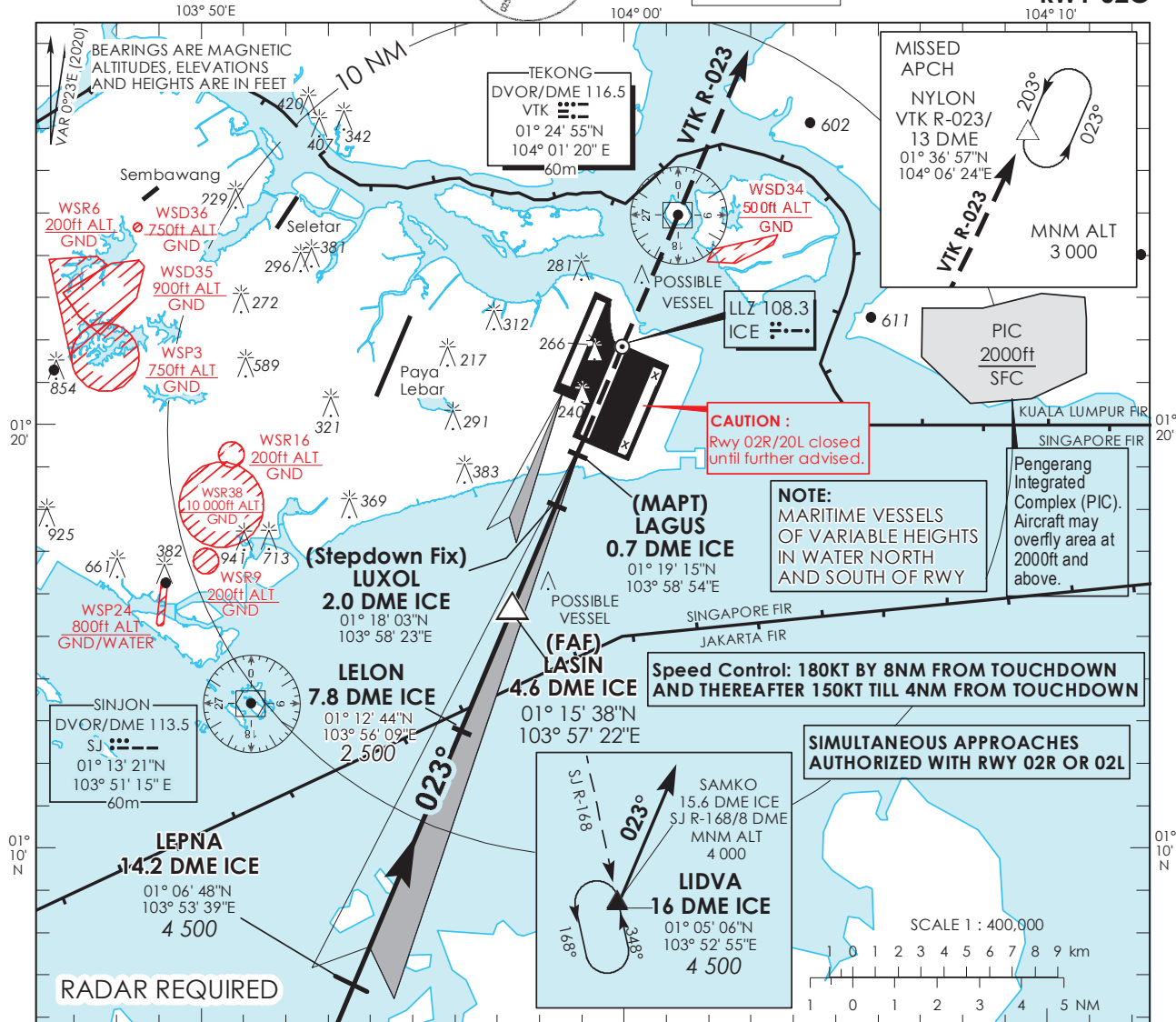


**INSTRUMENT  
APPROACH  
CHART - ICAO**

AERODROME ELEV 22ft  
HEIGHT RELATED TO  
THR RWY 02C - ELEV 16ft

D-ATIS AP ID WSSS  
128.025  
APP 124.05  
TWR 119.3  
118.6  
118.25

**SINGAPORE/  
SINGAPORE CHANGI  
ICE ILS/DME  
RWY 02C**



\* TIMING NOT AUTHORIZED WHEN GP INOP

|                      |                                | OCA (OCH)   |           |           |           |                |
|----------------------|--------------------------------|-------------|-----------|-----------|-----------|----------------|
| Category of Aircraft |                                | A           | B         | C         | D         | D <sub>L</sub> |
| Straight-in          | CAT I ILS                      | 170 (156)   | 180 (166) | 196 (182) | 209 (195) | 212 (198)      |
|                      | GP INOP (with stepdown fix)    | 420 (406)   |           |           |           |                |
|                      | GP INOP (without stepdown fix) | 660 (646)   |           |           |           |                |
| Distance             |                                | 4 DME       |           |           | 3 DME     |                |
| Altitude (Height)    |                                | 1290 (1276) |           |           | 970 (956) |                |
| Speed                | knots                          | 70          | 120       | 150       | 185       |                |
| FAF - MPT            | 3.9nm min : s*                 | 3 : 21      | 1 : 57    | 1 : 34    | 1 : 16    |                |
| Rate of descent/GS   | ft/min                         | 370         | 635       | 795       | 980       |                |