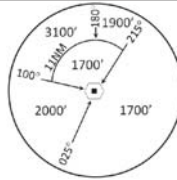


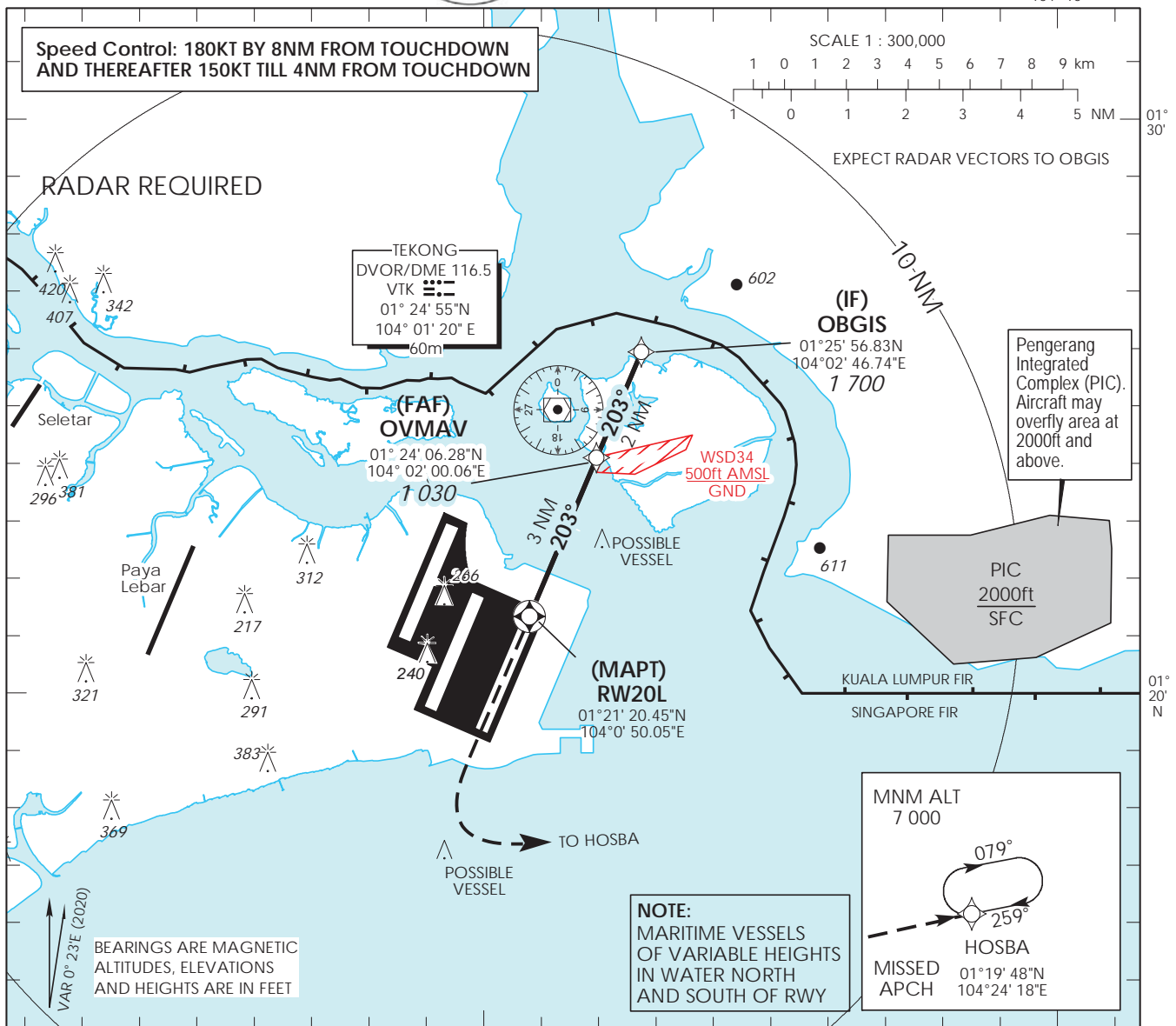
**INSTRUMENT APPROACH CHART**  
AERODROME ELEV 22ft  
HEIGHT RELATED TO  
THR RWY 20L - ELEV 16ft



MSA 25 NM  
from TEKONG DVOR

D-ATIS	AP ID	WSSS
APP	128.6	124.05
TWR	124.6	131.4

**SINGAPORE/  
SINGAPORE CHANGI**  
**RNP RWY 20L**

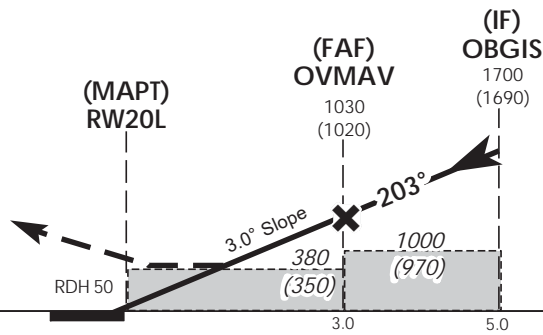


This procedure requires a missed approach climb gradient of 5% (304 ft/NM) until passing 3,000ft.  
For aircraft which can only achieve a 2.5% (152 ft/NM) climb gradient, the OCA (OCH) is 1080ft (1050ft).

Transition Level : FL 130  
Transition Alt : 11 000

**MISSED APPROACH**  
Climb straight to 1 500ft, turn left climbing to 7 000ft or above to HOSBA.  
Hold at HOSBA or AS DIRECTED BY ATC.  
No turn before MAPt.

**CIRCLING NOT AUTHORIZED**



		OCA (OCH)			
Category of Aircraft		A	B	C	D
LNAV/VNAV	5%	280 (260)			
LNAV	5%	380 (350)			
Distance		OBGIS		OVMAV	
Altitude (Height)		1700 (1690)		1030 (1020)	
Speed	knots	70	120	150	185
FAF - MAPt 3.0nm	min : s *	2 : 34	1 : 30	1 : 12	0 : 58
Rate of descent/GS	ft/min	370	635	795	980

**SINGAPORE CHANGI RNP-APCH RWY 20L – Approach from OBGIS**

Path Terminator	Waypoint	Fly-Over	Course °M (°T)	Magnetic Variation	Distance (NM)	Turn Direction	Altitude (FT)	Speed Limit (KT)	VPA/TCH(FT)	Navigation Specification
IF	OBGIS	-	203 (203.4)	-0.4	-	-	1700+	180	-	RNP APCH
TF	OVMAN	-	203 (203.4)	-0.4	2.0	-	1030+	150	-	RNP APCH
TF	RW20L	Y	203 (203.4)	-0.4	3.0	-	-	-	-3.0° / 50	RNP APCH
CA	-	-	203 (203.4)	-0.4	-	L	1500+	-	-	RNP APCH
DF	HOSBA	-	-	-	-	-	7000+	-	-	RNP APCH

**Waypoint Coordinates**

Name	Latitude	Longitude
OBGIS (IF)	01° 25' 56.83" N	104° 02' 46.74" E
OVMAN (FAF)	01° 24' 06.28" N	104° 02' 00.06" E
RW20L	01° 21' 20.45" N	104° 00' 50.05" E
HOSBA	01° 19' 48.00" N	104° 24' 18.00" E