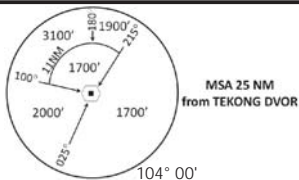


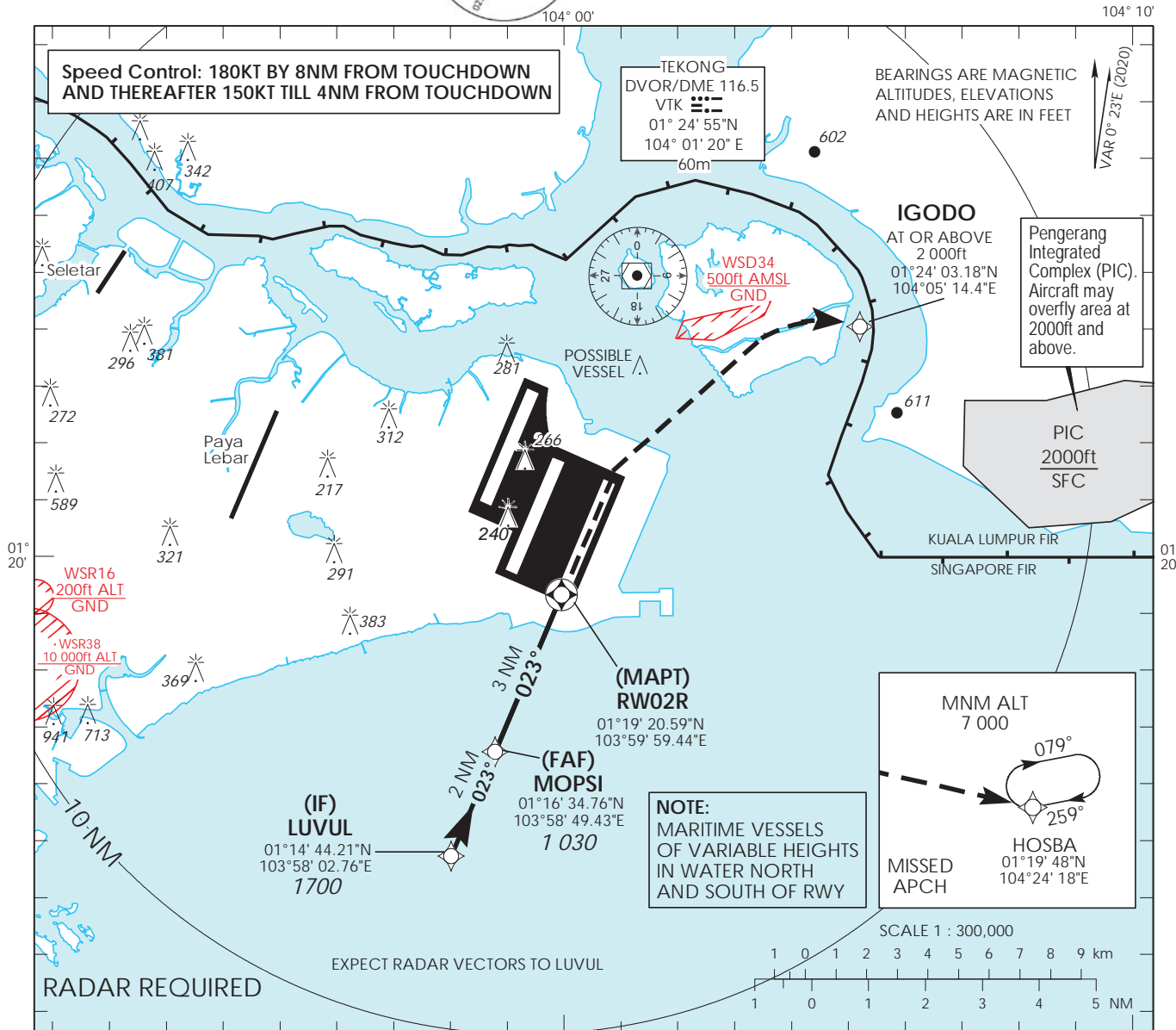
INSTRUMENT APPROACH CHART

AERODROME ELEV 22ft
HEIGHT RELATED TO
THR RWY 02R - ELEV 16ft

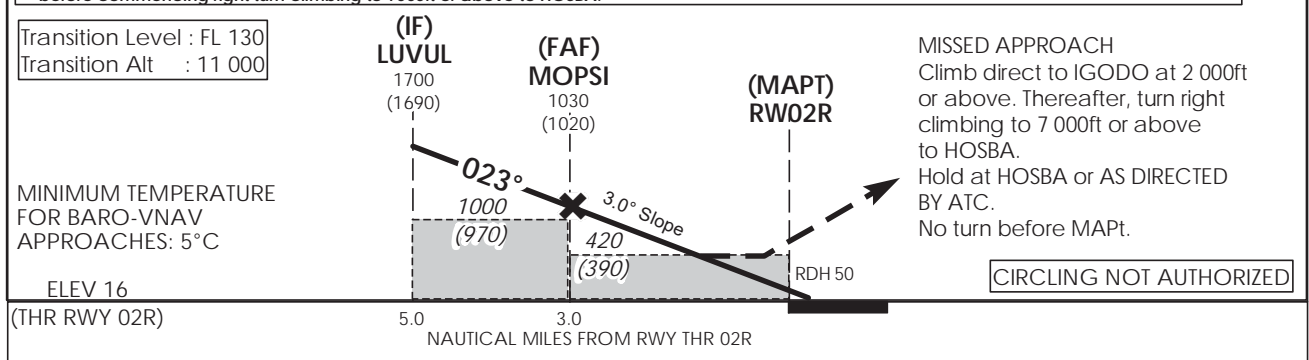


D-ATIS AP ID WSSS 128.025
APP 124.05
TWR 124.6
131.4

SINGAPORE/ SINGAPORE CHANGI
RNP RWY 02R



- This procedure requires a missed approach climb gradient of 5% (304 ft/NM) until passing 2,000ft. MAX IAS 185kts during turning missed approach.
- For aircraft which can only achieve a 2.5% (152 ft/NM) climb gradient, the OCA (OCH) is 820ft (800ft) and aircraft shall climb straight to 1200ft before commencing right turn climbing to 7000ft or above to HOSBA.



		OCA (OCH)			
Category of Aircraft		A	B	C	D
LNAV/VNAV	5%	330 (310)			
LNAV	5%	420 (390)			

		LUVUL		MOPSI	
Distance		1700 (1690)		1030 (1020)	
Altitude (Height)		1700 (1690)		1030 (1020)	
Speed	knots	70	120	150	185
FAF - MAPT 3.0nm	min : s *	2 : 34	1 : 30	1 : 12	0 : 58
Rate of descent/GS	ft/min	370	635	795	980

SINGAPORE CHANGI RNP-APCH RWY 02R – Approach from LUVUL

Path Terminator	Waypoint	Fly-Over	Course °M (°T)	Magnetic Variation	Distance (NM)	Turn Direction	Altitude (FT)	Speed Limit (KT)	VPA/TCH(FT)	Navigation Specification
IF	LUVUL	-	023 (023.4)	-0.4	-	-	1700+	180	-	RNP APCH
TF	MOPSI	-	023 (023.4)	-0.4	2.0	-	1030+	150	-	RNP APCH
TF	RW02R	Y	023 (023.4)	-0.4	3.0	R	-	-	-3.0° / 50	RNP APCH
DF	IGODO	-	-	-0.4	-	R	2000+	185	-	RNP APCH
TF	HOSBA	-	103 (103.4)	-0.4	-	-	7000+	-	-	RNP APCH

Waypoint Coordinates

Name	Latitude	Longitude
LUVUL (IF)	01° 14' 44.21" N	103° 58' 02.76" E
MOPSI (FAF)	01° 16' 34.76" N	103° 58' 49.43" E
RW02R	01° 19' 20.59" N	103° 59' 59.44" E
IGODO	01° 24' 03.18" N	104° 05' 14.40" E
HOSBA	01° 19' 48.00" N	104° 24' 18.00" E