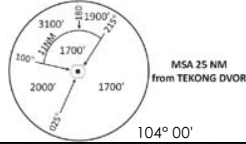
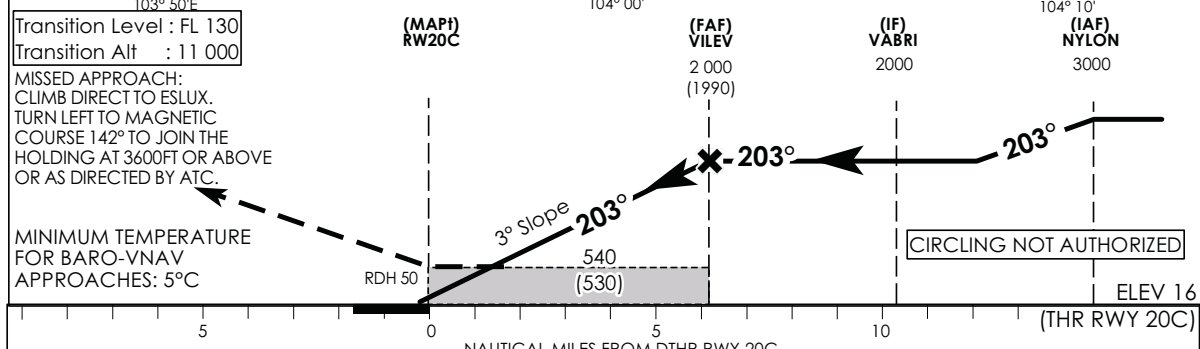
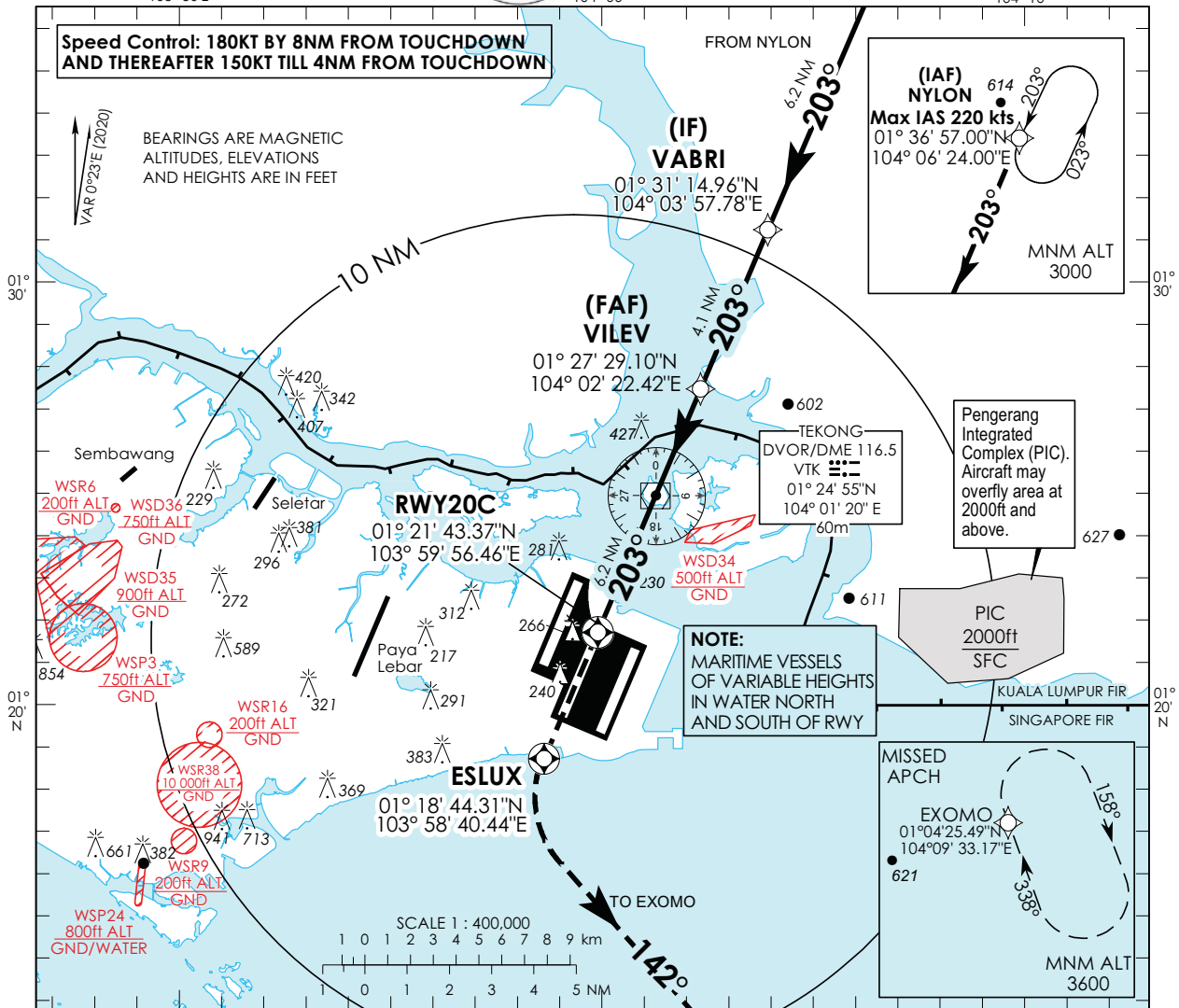


INSTRUMENT APPROACH CHART - ICAO
AERODROME ELEV 22ft
HEIGHT RELATED TO THR RWY 20C - ELEV 16ft



D-ATIS	AP ID	WSSS
APP	128.025	
TWR	124.05	
	119.3	
	118.6	
	118.25	

SINGAPORE/ SINGAPORE CHANGI RNP RWY 20C



		OCA (OCH)					
Category of Aircraft		A	B	C	D		
LNAV/VNAV	2.5%	490 (480)					
LNAV	2.5%	540 (530)					
Fix		NYLON	VABRI	VILEV	RW20C	ESLUX	EXOMO
Altitude (Height)		3000 (2985)	2000 (1985)	2000 (1985)	540 (525)	540 (525)	3600 (3585)
Speed	knots	80	100	120	140	160	180
FAF - MAPt 6.2 nm	min : s	4 : 39	3 : 44	3 : 06	2 : 40	2 : 20	2 : 04
Rate of descent/GS	ft/min	425	531	637	743	849	955

SINGAPORE CHANGI RNP-APCH RWY 20C – Approach from NYLON

Path Terminator	Waypoint	Fly-Over	Course °M (°T)	Magnetic Variation	Distance (NM)	Turn Direction	Altitude (FT)	Speed Limit (KT)	VPA/TCH(FT)	Navigation Specification
IF	NYLON	-	-	-0.4	-	-	A030+	220	-	RNP APCH
TF	VABRI	-	203 (203.4)	-0.4	6.2	-	A020+	-	-	RNP APCH
TF	VILEV	-	203 (203.4)	-0.4	4.1	-	A020+	-	-	RNP APCH
TF	RW20C	Y	203 (203.4)	-0.4	6.2	-	-	-	-3.0° / 50	RNP APCH
DF	ESLUX	Y	-	-0.4	-	L	-	-	-	RNP APCH
TF	EXOMO	-	142 (142.4)	-0.4	-	-	A036+	-	-	RNP APCH

Waypoint Coordinates

Name	Latitude	Longitude
NYLON (IAF)	01° 36' 57.00" N	104° 06' 24.00" E
VABRI (IF)	01° 31' 14.96" N	104° 03' 57.78" E
VILEV (FAF)	01° 27' 29.10" N	104° 02' 22.42" E
RW20C	01° 21' 43.37" N	103° 59' 56.46" E
ESLUX	01° 18' 44.31" N	103° 58' 40.44" E
EXOMO	01° 04' 25.49" N	104° 09' 33.17" E