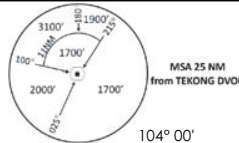


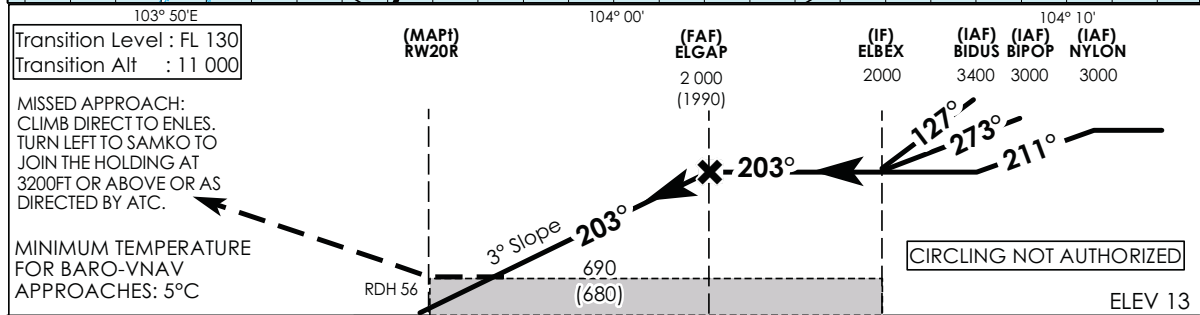
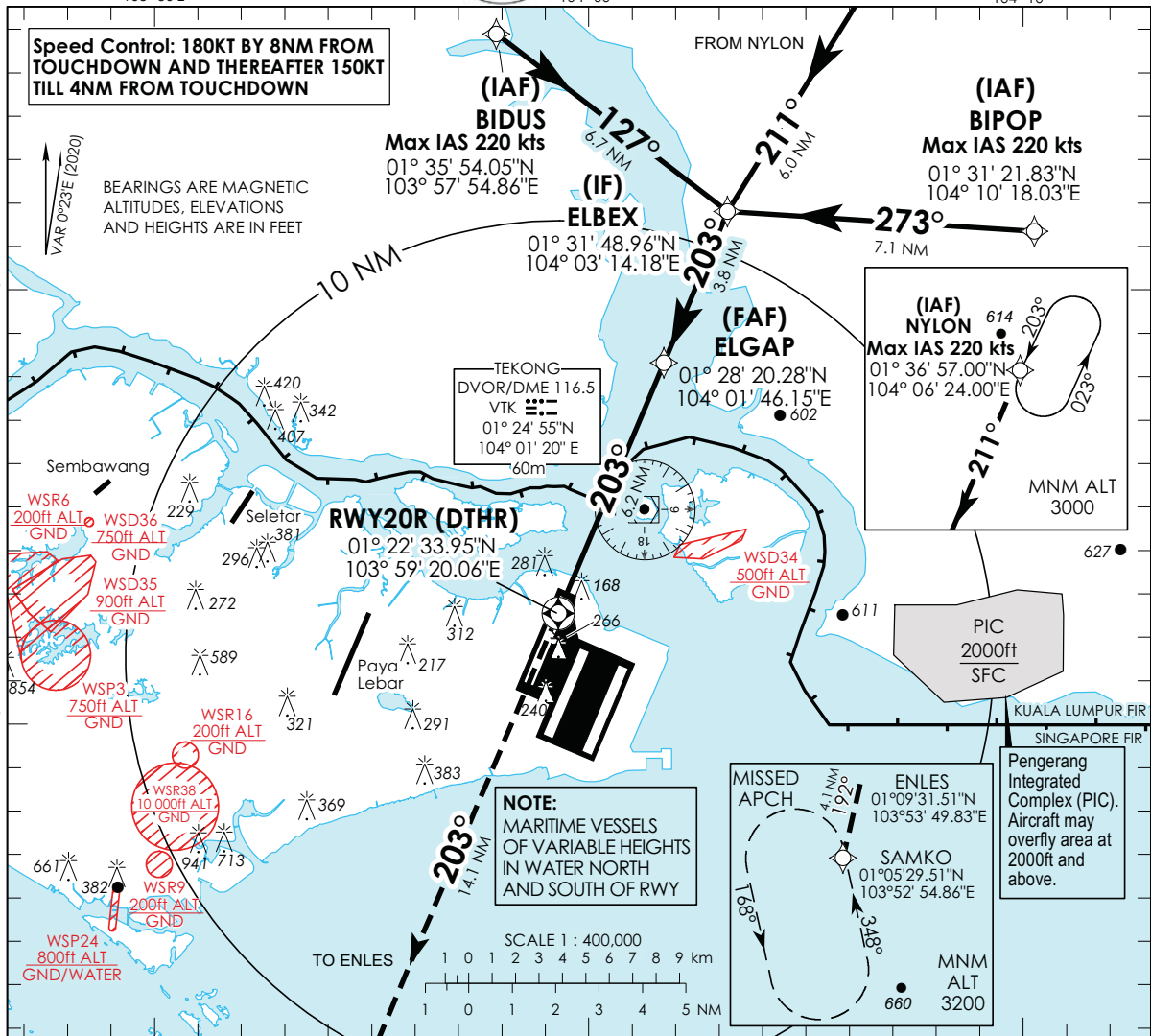
INSTRUMENT APPROACH CHART - ICAO

AERODROME ELEV 22ft
HEIGHT RELATED TO
DTHR RWY 20R - ELEV 13ft



D-ATIS	AP ID WSSS
APP	128.025
TWR	124.05
	119.3
	118.6
	118.25

SINGAPORE/ SINGAPORE CHANGI RNP RWY 20R



		OCA (OCH)							
Category of Aircraft		A		B		C		D	
LNAV/VNAV	2.5%	690 (680)							
LNAV	2.5%	690 (680)							
Fix		BIDUS	NYLON	BIPOP	ELBEX	ELGAP	RW20R	ENLES	SAMKO
Altitude (Height)		3400 (3387)	3000 (2987)	3000 (2987)	2000 (1987)	2000 (1987)	690 (680)	2180 (2167)	3200 (3187)
Speed	knots	80	100	100	120	140	160	180	
FAF - MAPt 6.2 nm	min : s	4 : 39	3 : 44	3 : 06	2 : 40	2 : 20	2 : 04		
Rate of descent/GS	ft/min	425	531	637	743	849	955		

SINGAPORE CHANGI RNP-APCH RWY 20R – Approach from BIDUS

Path Terminator	Waypoint	Fly-Over	Course °M (°T)	Magnetic Variation	Distance (NM)	Turn Direction	Altitude (FT)	Speed Limit (KT)	VPA/TCH(FT)	Navigation Specification
IF	BIDUS	-	-	-0.4	-	-	A034+	220	-	RNP APCH
TF	ELBEX	-	127 (127.4)	-0.4	6.7	R	A020+	-	-	RNP APCH
TF	ELGAP	-	203 (203.4)	-0.4	3.8	-	A020+	-	-	RNP APCH
TF	RW20R	Y	203 (203.4)	-0.4	6.2	-	-	-	-3.0° / 50	RNP APCH
DF	ENLES	-	-	-0.4	-	L	-	-	-	RNP APCH
TF	SAMKO	-	192 (192.4)	-0.4	4.1	-	A032+	-	-	RNP APCH

SINGAPORE CHANGI RNP-APCH RWY 20R – Approach from NYLON

Path Terminator	Waypoint	Fly-Over	Course °M (°T)	Magnetic Variation	Distance (NM)	Turn Direction	Altitude (FT)	Speed Limit (KT)	VPA/TCH(FT)	Navigation Specification
IF	NYLON	-	-	-0.4	-	-	A030+	220	-	RNP APCH
TF	ELBEX	-	211 (211.4)	-0.4	6.0	L	A020+	-	-	RNP APCH
TF	ELGAP	-	203 (203.4)	-0.4	3.8	-	A020+	-	-	RNP APCH
TF	RW20R	Y	203 (203.4)	-0.4	6.2	-	-	-	-3.0° / 50	RNP APCH
DF	ENLES	-	-	-0.4	-	L	-	-	-	RNP APCH
TF	SAMKO	-	192 (192.4)	-0.4	4.1	-	A032+	-	-	RNP APCH

SINGAPORE CHANGI RNP-APCH RWY 20R – Approach from BIPOP

Path Terminator	Waypoint	Fly-Over	Course °M (°T)	Magnetic Variation	Distance (NM)	Turn Direction	Altitude (FT)	Speed Limit (KT)	VPA/TCH(FT)	Navigation Specification
IF	BIPOP	-	-	-0.4	-	-	A030+	220	-	RNP APCH
TF	ELBEX	-	273 (273.4)	-0.4	7.1	L	A020+	-	-	RNP APCH
TF	ELGAP	-	203 (203.4)	-0.4	3.8	-	A020+	-	-	RNP APCH
TF	RW20R	Y	203 (203.4)	-0.4	6.2	-	-	-	-3.0° / 50	RNP APCH
DF	ENLES	-	-	-0.4	-	L	-	-	-	RNP APCH
TF	SAMKO	-	192 (192.4)	-0.4	4.1	-	A032+	-	-	RNP APCH

Waypoint Coordinates

Name	Latitude	Longitude
BIDUS (IAF)	01° 35' 54.05" N	103° 57' 54.86" E
NYLON (IAF)	01° 36' 57.00" N	104° 06' 24.00" E
BIPOP (IAF)	01° 31' 21.83" N	104° 10' 18.03" E
ELBEX (IF)	01° 31' 48.96" N	104° 03' 14.18" E
ELGAP (FAF)	01° 28' 20.28" N	104° 01' 46.15" E
RW20R	01° 22' 33.95" N	103° 59' 20.06" E
ENLES	01° 09' 31.51" N	103° 53' 49.83" E
SAMKO	01° 05' 29.51" N	103° 52' 54.86" E