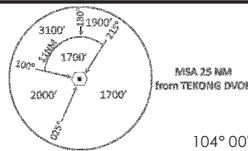
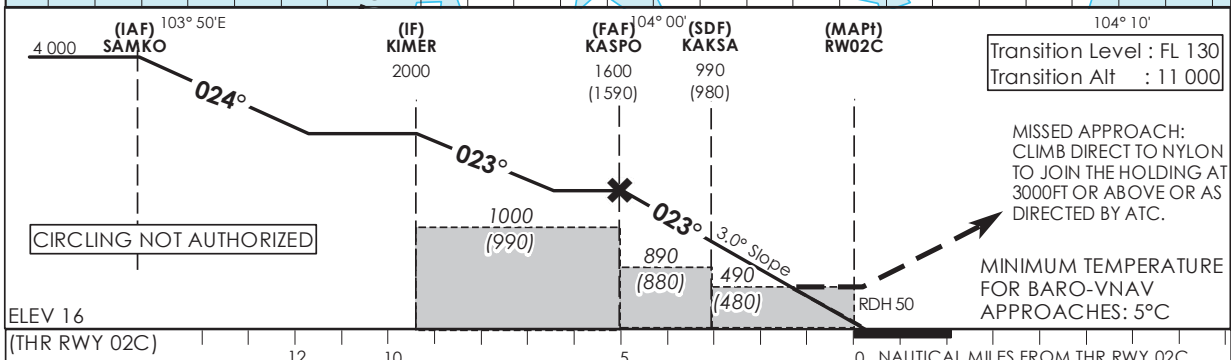
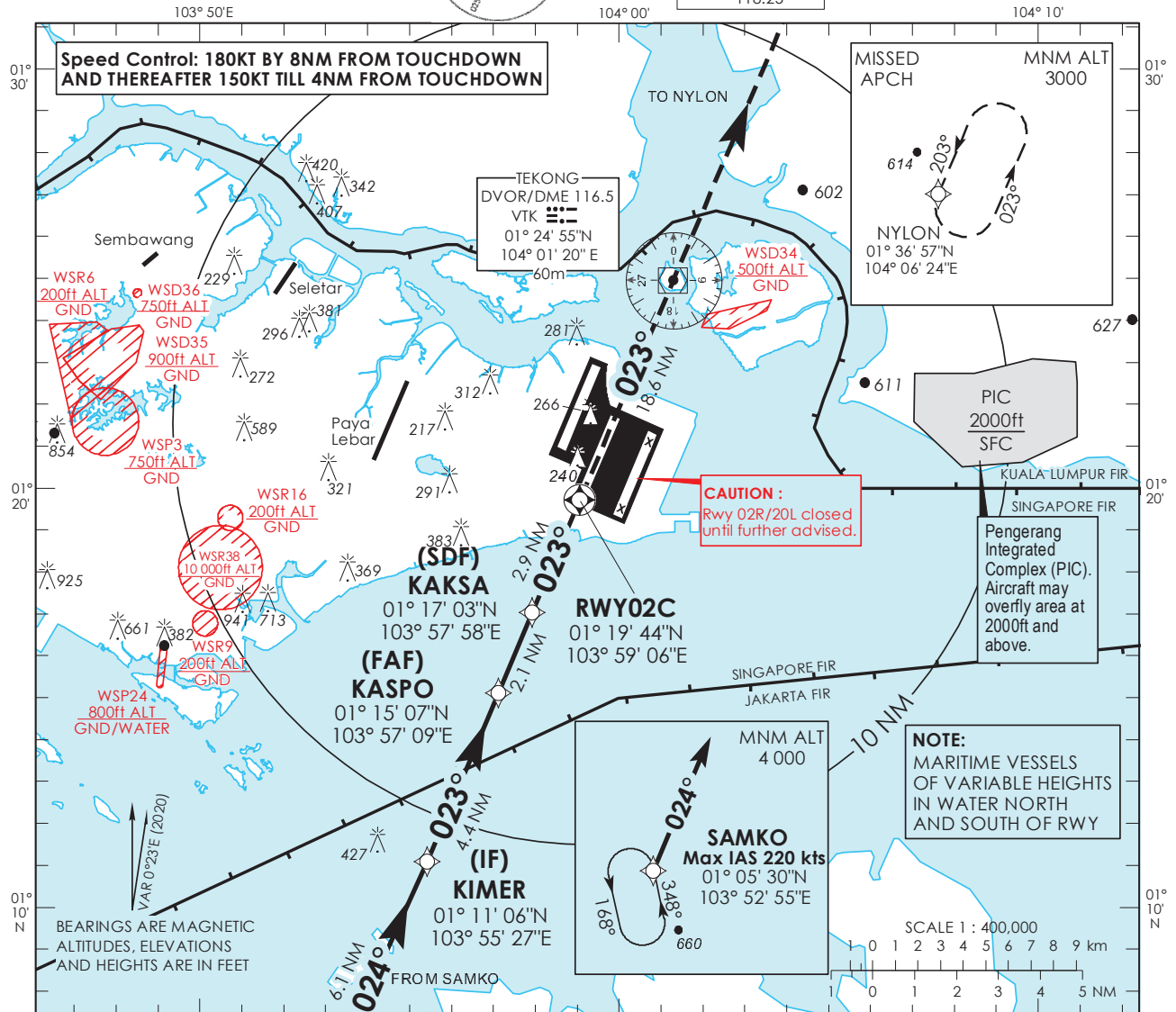


**INSTRUMENT APPROACH CHART - ICAO** AERODROME ELEV **22ft**  
HEIGHT RELATED TO THR RWY 02C - ELEV **16ft**



D-ATIS AP ID WSSS	128.025
APP	124.05
TWR	118.6
	118.25

**SINGAPORE/ SINGAPORE CHANGI RNP RWY 02C**



Category of Aircraft	OCA (OCH)			
	A	B	C	D
LNAV	2.5%	<b>490 (480)</b>		
LNAV without SDF	2.5%	<b>890 (880)</b>		
LNAV/VNAV	2.5%	<b>360 (350)</b>		

Fix	SAMKO	KIMER	KASPO	KAKSA	RW02C	NYLON
Altitude (Height)	<b>4000 (3986)</b>	<b>2000 (1986)</b>	<b>1600 (1586)</b>	<b>990 (976)</b>	<b>490 (476)</b>	<b>3000 (2986)</b>
Speed	knots	80	100	120	140	160
FAF - MAPt 5nm	min : s	<b>3 : 45</b>	<b>3 : 00</b>	<b>2 : 30</b>	<b>2 : 09</b>	<b>1 : 53</b>
Rate of descent/GS	ft/min	<b>425</b>	<b>531</b>	<b>637</b>	<b>743</b>	<b>849</b>

**SINGAPORE CHANGI RNP-APCH RWY 02C – Approach from SAMKO**

Path Terminator	Waypoint	Fly-Over	Course °M (°T)	Magnetic Variation	Distance (NM)	Turn Direction	Altitude (FT)	Speed Limit (KT)	VPA/TCH(FT)	Navigation Specification
IF	SAMKO	-	-	-0.4	-	-	A040+	220	-	RNP APCH
TF	KIMER	-	024 (024.4)	-0.4	6.1	-	A020+	-	-	RNP APCH
TF	KASPO	-	023 (023.4)	-0.4	4.4	-	A016+	-	-	RNP APCH
TF	KAKSA	-	023 (023.4)	-0.4	2.1	-	990ft+	-	-	RNP APCH
TF	RW02C	Y	023 (023.4)	-0.4	2.9	-	-	-	-3.0° / 50	RNP APCH
DF	NYLON	-	-	-0.4	-	-	A030+	-	-	RNP APCH

**Waypoint Coordinates**

Name	Latitude	Longitude
SAMKO (IAF)	01° 05' 30" N	103° 52' 55" E
KIMER (IF)	01° 11' 06" N	103° 55' 27" E
KASPO (FAF)	01° 15' 07" N	103° 57' 09" E
KAKSA (SDF)	01° 17' 03" N	103° 57' 58" E
RW02C	01° 19' 44" N	103° 59' 06" E
NYLON	01° 36' 57" N	104° 06' 24" E