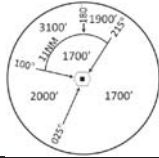


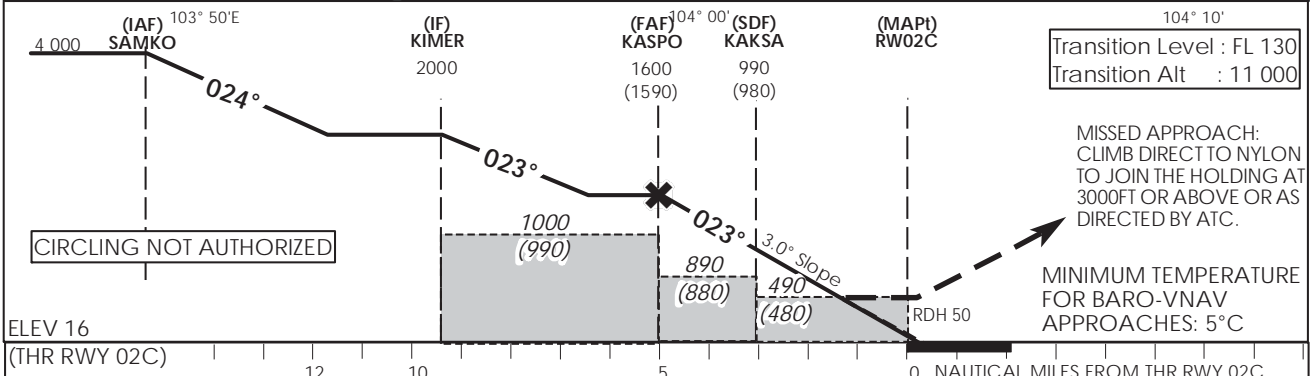
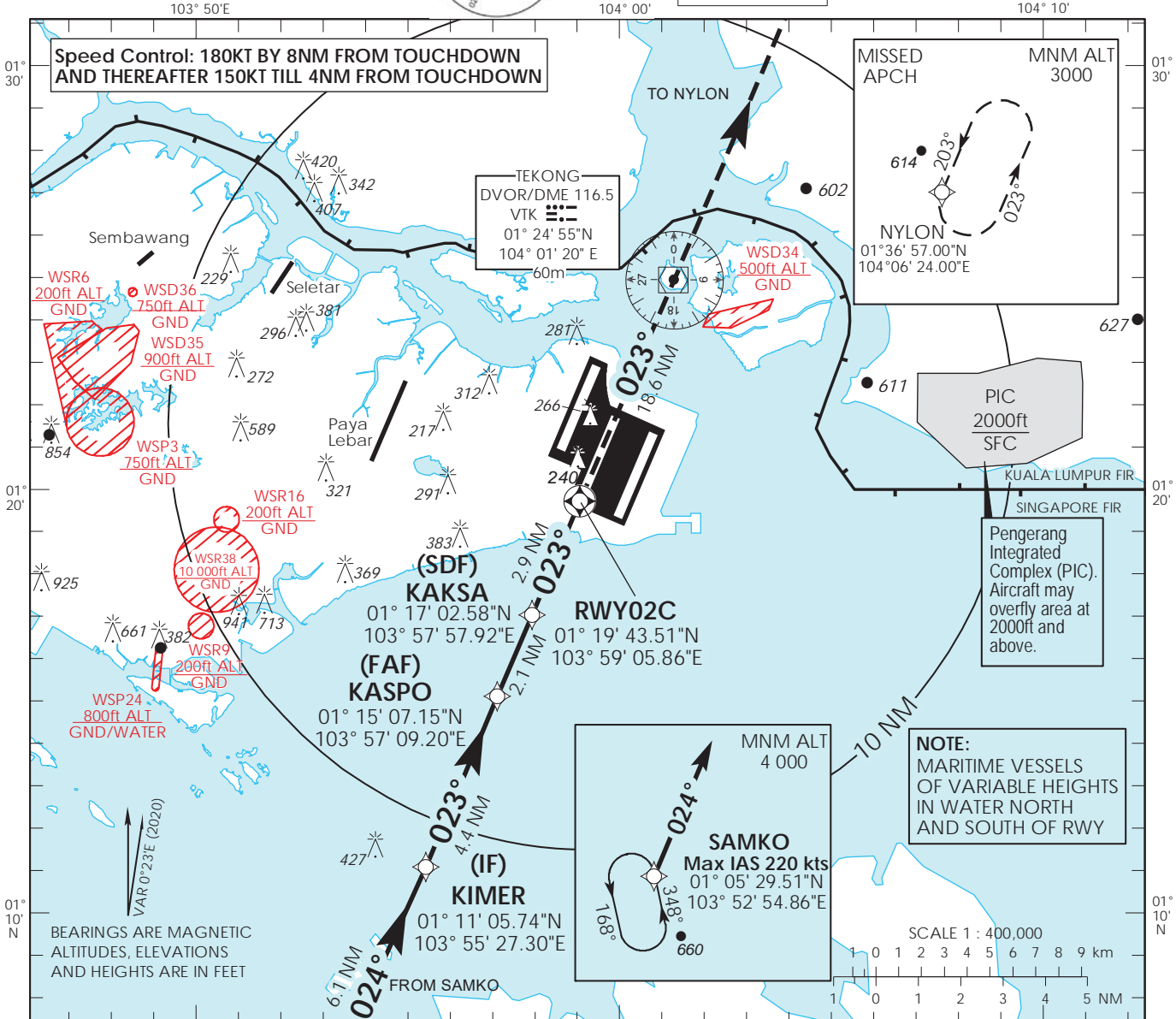
INSTRUMENT APPROACH CHART - ICAO AERODROME ELEV 22ft
HEIGHT RELATED TO THR RWY 02C - ELEV 16ft



MSA 25 NM
from TEKONG DVOR

D-ATIS AP ID WSSS
128.025
APP 124.05
119.3
TWR 118.6
118.25

SINGAPORE/SINGAPORE CHANGI RNP RWY 02C



Category of Aircraft	OCA (OCH)			
	A	B	C	D
LNAV	2.5%	490 (480)		
LNAV without SDF	2.5%	890 (880)		
LNAV/VNAV	2.5%	360 (350)		

Fix	SAMKO	KIMER	KASPO	KAKSA	RW02C	NYLON
Altitude (Height)	4000 (3986)	2000 (1986)	1600 (1586)	990 (976)	490 (476)	3000 (2986)
Speed	knots 80	100	120	140	160	180
FAF - MAPt 5nm	min : s 3 : 45	3 : 00	2 : 30	2 : 09	1 : 53	1 : 40
Rate of descent/GS	ft/min 425	531	637	743	849	955

SINGAPORE CHANGI RNP-APCH RWY 02C – Approach from SAMKO

Path Terminator	Waypoint	Fly-Over	Course °M (°T)	Magnetic Variation	Distance (NM)	Turn Direction	Altitude (FT)	Speed Limit (KT)	VPA/TCH(FT)	Navigation Specification
IF	SAMKO	-	-	-0.4	-	-	A040+	220	-	RNP APCH
TF	KIMER	-	024 (024.4)	-0.4	6.1	-	A020+	-	-	RNP APCH
TF	KASPO	-	023 (023.4)	-0.4	4.4	-	A016+	-	-	RNP APCH
TF	KAKSA	-	023 (023.4)	-0.4	2.1	-	990ft+	-	-	RNP APCH
TF	RW02C	Y	023 (023.4)	-0.4	2.9	-	-	-	-3.0° / 50	RNP APCH
DF	NYLON	-	-	-0.4	-	-	A030+	-	-	RNP APCH

Waypoint Coordinates

Name	Latitude	Longitude
SAMKO (IAF)	01° 05' 29.51" N	103° 52' 54.86" E
KIMER (IF)	01° 11' 05.74" N	103° 55' 27.30" E
KASPO (FAF)	01° 15' 07.15" N	103° 57' 09.20" E
KAKSA (SDF)	01° 17' 02.58" N	103° 57' 57.92" E
RW02C	01° 19' 43.51" N	103° 59' 05.86" E
NYLON	01° 36' 57.00" N	104° 06' 24.00" E