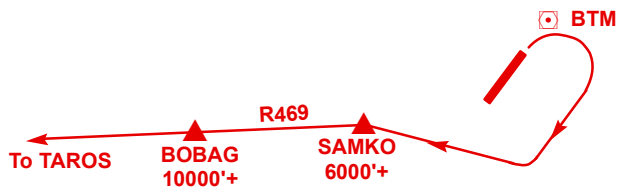


**BATAM AIRPORT - RUNWAY 04 AND 22
STANDARD INSTRUMENT DEPARTURE (SID)**

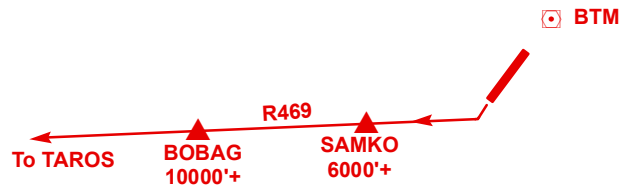
RUNWAY 04



**BOBAG 1C DEP (ROMEO 469 WESTBOUND)
(TO PEKANBARU)**

After departure, turn right to join Airway R469 at SAMKO. Cross SAMKO at or above 6 000ft. Proceed on Airway R469 to TAROS. Cross BOBAG at or above 10 000ft.

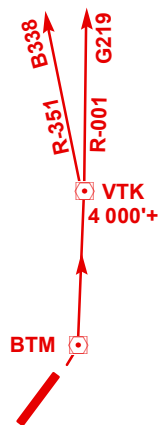
RUNWAY 22



**BOBAG 1D DEP (ROMEO 469 WESTBOUND)
(TO PEKANBARU)**

After departure, turn right to join Airway R469 at SAMKO. Cross SAMKO at or above 6 000ft. Proceed on Airway R469 to TAROS. Cross BOBAG at or above 10 000ft.

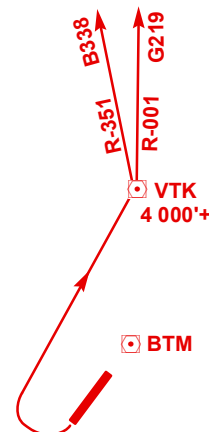
RUNWAY 04



**TEKONG 1C DEP
(BRAVO 338/GOLF 219 NORTHBOUND)**

After departure, proceed to BTM VOR/DME. At BTM VOR/DME turn left for TEKONG DVOR/DME to cross TEKONG DVOR/DME at or above 4 000ft. Then proceed on Airway B338/G219.

RUNWAY 22



**TEKONG 1D DEP
(BRAVO 338/GOLF 219 NORTHBOUND)**

After departure, turn right for TEKONG DVOR/DME to cross TEKONG DVOR/DME at or above 4 000ft. Then proceed on Airway B338/G219.